

CERTIFICATE OF LOCATION OF GOVERNMENT CORNER

E1/4 Corner of Section 26, Township 40, Range 24,
4th Principal Meridian, Kanabec County, State of Minnesota

At the corner location shown on the sketch:
On 09/05/2006 Found a Railroad Spike.
Said monument was left as found.

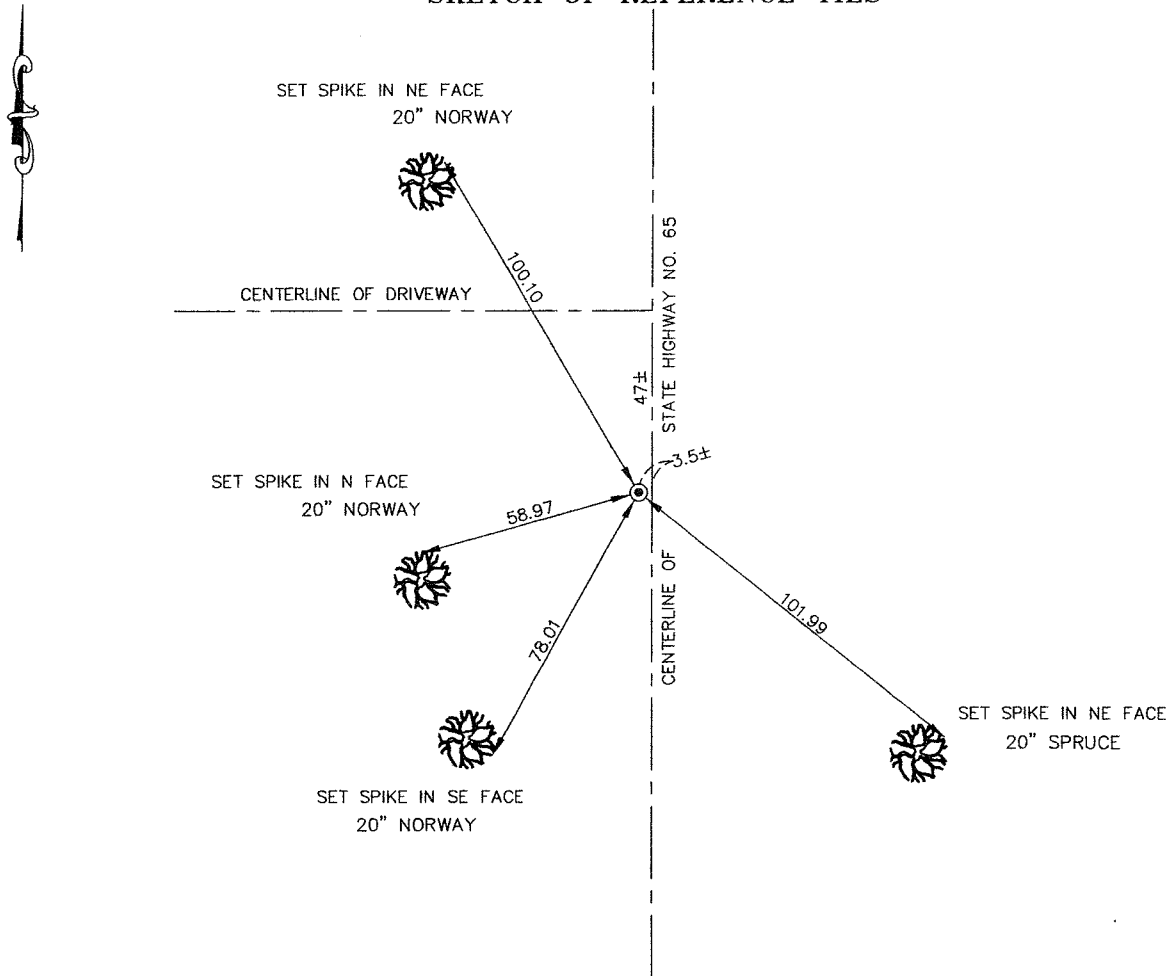
Kanabec County U.S. Survey Feet Coordinates
NAD 1983, HARN 1996 Adjustment
Obtained by RTK GPS observation
Northing: 171803.2475
Easting: 401530.2284

Note: NAD 1983, HARN 1996 Adjustment
coordinates are NOT compatible with
NAD 1983 coordinates

Note: 1 Meter = 3937/1200 U.S. Survey Feet

SKETCH OF REFERENCE TIES

109/59



Statement of evidence relative to this corner location is on back of page.

I hereby certify that this document and the data contained herein was prepared by me or under my direct supervision.

[Signature] 12-18-2006
Signature Date

License No. 44490

- Land Surveyor Professional Engineer
- County Surveyor County Engineer

OFFICE OF THE COUNTY RECORDER
County of Kanabec

I hereby certify that this document was filed in the
County Recorders office at _____ .M. on the
_____ day of _____ A.D., 20_____

County Recorder _____
By _____, Deputy

DOCUMENT NO. _____

Statement of Evidence:

All the original bearing trees are now gone.

In 1928, Chas Handschu, RLS 464, made a survey around Section 26, Township 40, Range 24. According to his notes he measured 5167.6 feet along the east line of said Section 26 from the Northeast Corner to the Southeast Corner, with the East Quarter corner being halfway.

In 1932 the Minnesota D.O.T. made a survey for Trunk Highway 65. Their Right of Way map shows the East Quarter corner of Section 26 on the centerline of the road. The map does not give a station or show any monuments or ties to the corner.

In August 1979, Don Hansen, RLS 9260, made a survey around Section 25, Township 40, Range 24, and according to Mr. Hansen's notes, a Railroad Spike was set at the West Quarter corner of Section 25, halfway and online between the Northwest and Southwest corners of said Section 25. He made ties to 4 trees. Mr. Hansen measured 5168.81 feet along the west line of said Section 25 from the Northwest Corner to the Southwest Corner.

In February 1980, M.B. Rude, RLS 8195, made a survey for the plat of CARDA ESTATES for Lloyd Carda in Section 26, Township 40, Range 24. Per Mr. Rude's notes, a railroad spike was found at the East Quarter corner of said Section 26. The railroad spike was used as the East Quarter corner for the plat of CARDA ESTATES. Mr. Rude measured 5168.88 feet along the east line of said Section 26 from the Northeast Corner to the Southeast Corner. Mr. Rude measured 2584.44 feet from the Southeast Corner of said Section 26 to the East Quarter corner of said Section 26.

In August 2006, we made a survey for Leroy Sipes around Section 25, Township 40, Range 24, to locate existing monuments. On August 31, 2006, a railroad spike was found at the East Quarter corner of Section 26, Township 40, Range 24, and was left as found. We measured 5168.90 feet along the east line of Section 26 from the Northeast Corner to the Southeast Corner. We measured 2584.46 feet from the Southeast Corner of said Section 26 to the East Quarter corner of Section 26. I accepted the found railroad spike as the best available evidence of the original corner location. No excavation was made in the search. Established reference ties and assigned County Coordinates.