

# CERTIFICATE OF LOCATION OF GOVERNMENT CORNER

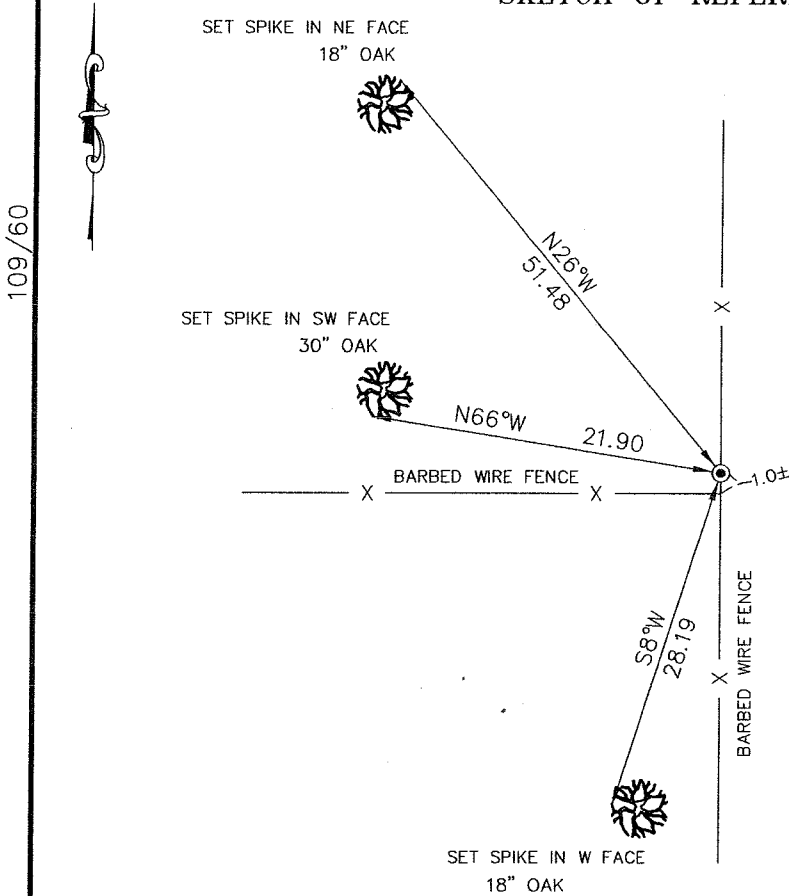
N1/4 Corner of Section 36, Township 40, Range 24,  
4th Principal Meridian, Kanabec County, State of Minnesota

At the corner location shown on the sketch:  
On 09/05/2006 Found a Cast Aluminum Monument.  
Said monument was left as found.

Kanabec County U.S. Survey Feet Coordinates  
NAD 1983, HARN 1996 Adjustment  
Obtained by RTK GPS observation  
Northing: 169175.7456  
Easting: 404186.6575

Note: NAD 1983, HARN 1996 Adjustment  
coordinates are NOT compatible with  
NAD 1983 coordinates  
Note: 1 Meter = 3937/1200 U.S. Survey Feet

## SKETCH OF REFERENCE TIES



Statement of evidence relative to this corner location is on back of page.

I hereby certify that this document and the data contained herein was prepared by me or under my direct supervision.

Signature: *[Handwritten Signature]* Date: 12-18-2006

License No. 44490

- Land Surveyor
- Professional Engineer
- County Surveyor
- County Engineer

### OFFICE OF THE COUNTY RECORDER

County of Kanabec

I hereby certify that this document was filed in the County Recorders office at \_\_\_\_\_ .M. on the \_\_\_\_\_ day of \_\_\_\_\_ A.D., 20\_\_\_\_

County Recorder \_\_\_\_\_  
By \_\_\_\_\_, Deputy

DOCUMENT NO. \_\_\_\_\_

Statement of Evidence:

In 1855, Silas Bernard made the original survey and set a wood post for the North Quarter corner of Section 36, Township 40, Range 24 with ties to the following trees:

18" Pine	S 51° W	32 links
6" White Birch	S 28° E	23 links
7" White Birch	N 20° W	40 links
6" White Birch	N.E.	54 links

All the original government evidence was searched for, none was found.

In October 1901, former County Surveyor John Nelson made a survey around Section 36, Township 40, Range 24, and found a post at the North Quarter corner with ties to a White Oak, S 76° E, at 0.49 chains. Mr. Nelson measured 39.81 chains from the Northwest corner of Section 36 to the North Quarter corner of Section 36 and 39.81 chains from the North Quarter corner of Section 36 to the Northeast corner of Section 36. The post and tree are gone.

In October 1977, former County Surveyor M.B. Rude, RLS 8195, made a survey around Section 36, Township 40, Range 24, for John Hunter. Per Mr. Rude's notes, his search crew found a fence line running east and west and a fence running north. There was no other visible evidence to indicate the North Quarter corner.

In August 1979, Don Hansen, RLS 9260, made a survey around Section 25, Township 40, Range 24. According to Mr. Hansen's notes, a Cast Aluminum Monument was set at the South Quarter corner of Section 25, at the fenceline intersection. His notes show ties to two trees. Mr. Hansen's notes also show an old fenceline running south. Mr. Hansen measured 2638.19 feet from the Southwest corner of Section 25 to the South Quarter corner of Section 25 and 2632.81 feet from the South Quarter corner of Section 25 to the Southeast corner of Section 25.

In August of 2006, we made a survey for Leroy Sipes around Section 36, Township 40, Range 24, to locate existing monuments. On August 31, 2006, a Cast Aluminum Monument was found at the North Quarter corner of Section 36, and was left as found. We measured 2638.24 feet from the Northwest Corner of Section 36 to the North Quarter corner of Section 36 and 2632.92 feet from the North Quarter corner of Section 36 to the Northeast corner of Section 36. Established reference ties and assigned County Coordinates.