

CERTIFICATE OF LOCATION OF GOVERNMENT CORNER

NORTHWEST Corner of Section 36, Township 40, Range 24, 4TH P.M.

STATE OF MINNESOTA, County of KANABEC

At the corner location shown on the sketch:
On 05/ /2004 Found a Kanabec County Monument.

Kanabec County U.S. Survey Feet Coordinates
NAD 1983, HARN 1996 Adjustment
Obtained by RTK GPS Observation

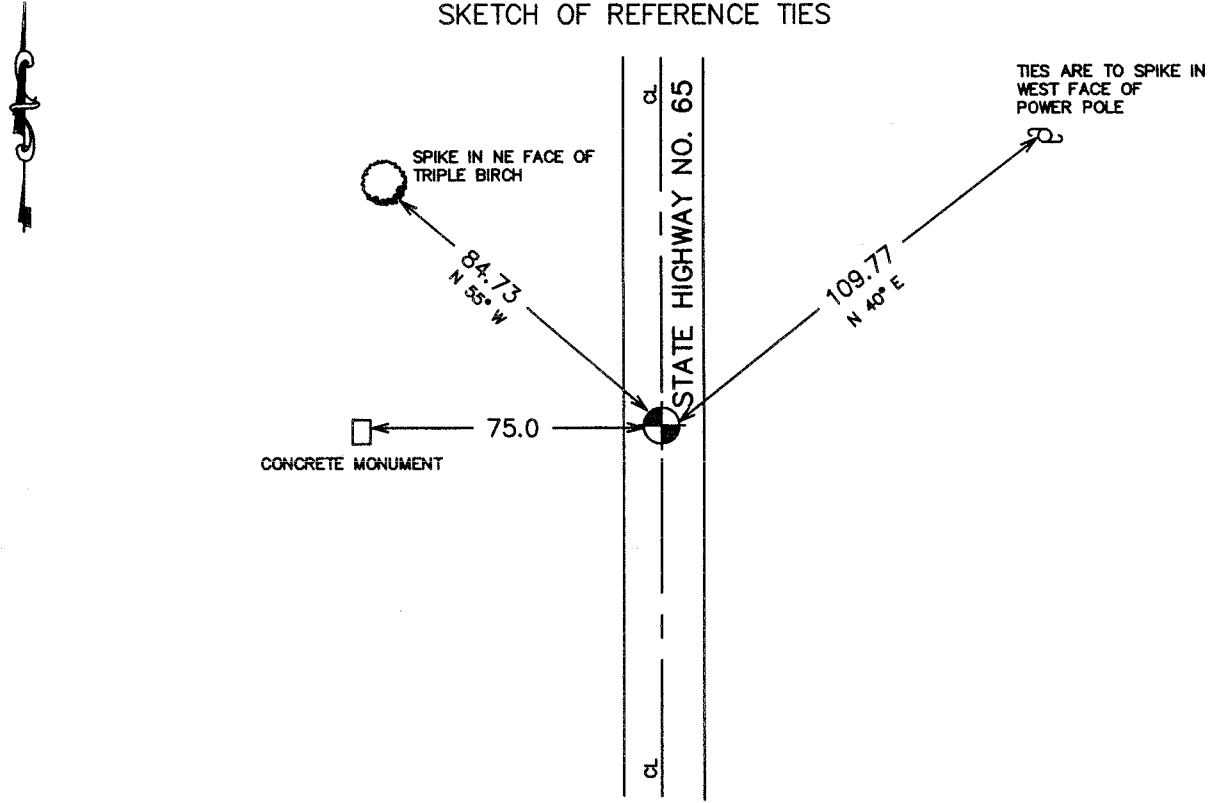
Northing= 169218.853

Easting= 401548.805

Note: NAD 1983, HARN 1996 Adjustment
coordinates are NOT compatible with
NAD 1983 coordinates

Note: 1 Meter=3937/1200 U.S. Survey Feet

SKETCH OF REFERENCE TIES



Statement of evidence relative to this corner location is on back of page.

I hereby certify that this document and the data contained herein was prepared by me or under my direct supervision.

Ernest L. Reed
Signature

6-14-04
Date

Registration No. 9800

Land Surveyor, [] Professional Engineer

[] County Surveyor, [] County Engineer

OFFICE OF THE COUNTY RECORDER

County of _____

I hereby certify that this document was filed in the County Recorder's office at _____ M. on the _____ day of _____ A.D., 20____

County Recorder _____

BY _____ Deputy

DOCUMENT NO. _____

STATEMENT OF EVIDENCE
(FROM TIE SHEET 511)

The County Surveyor, Mr. John Nelson, set a stone marked with an "X" in 1901. In 1931, Mr. Handschu found the stone with an "X". In 1932, the Department of Transportation found a stone with an "X" and used this stone as the Highway PI.

Certificate No. 71 in 1920, shows a stone with an "X". The Department of Transportation's PI has been referenced with concrete monuments set 75.0 feet east and 75.0 feet west.

We reset the PI location from this concrete monument.

(2004)

In May 2004, E.G. Rud ran a survey around Section 36, and found this monument. We established Kanabec County Coordinates on this location using G.P.S. equipment.