

CERTIFICATE OF LOCATION OF GOVERNMENT CORNER

SOUTH QUARTER Corner of Section 36, Township 40, Range 24, 4TH P.M.

STATE OF MINNESOTA, County of KANABEC

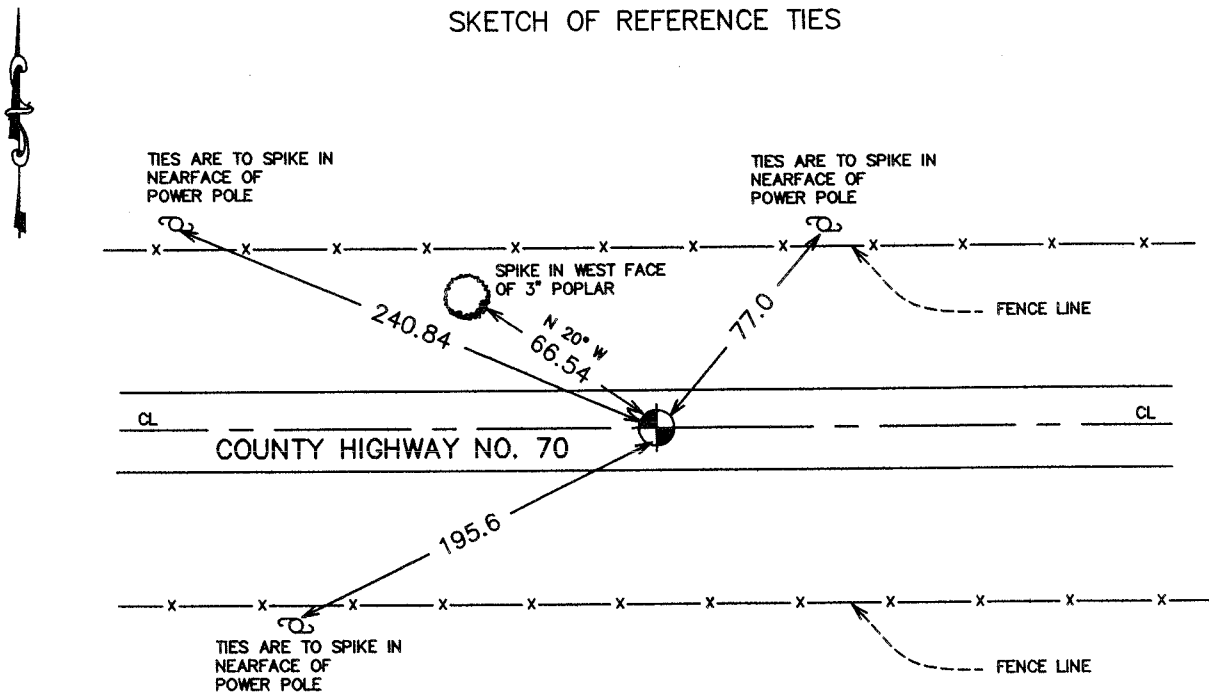
At the corner location shown on the sketch:
On 05/ /2004 Found a Kanabec County Monument.

Kanabec County U.S. Survey Feet Coordinates
NAD 1983, HARN 1996 Adjustment
Obtained by RTK GPS Observation

Northing= 163832.080
Easting= 404173.610

Note: NAD 1983, HARN 1996 Adjustment
coordinates are NOT compatible with
NAD 1983 coordinates
Note: 1 Meter=3937/1200 U.S. Survey Feet

SKETCH OF REFERENCE TIES



Statement of evidence relative to this corner location is on back of page.

I hereby certify that this document and the data contained herein was prepared by me or under my direct supervision.

Ernest J. Reed
Signature

6-14-04
Date

Registration No. 9800

Land Surveyor, [] Professional Engineer

[] County Surveyor, [] County Engineer

OFFICE OF THE COUNTY RECORDER

County of _____

I hereby certify that this document was filed in the County Recorder's office at _____ M. on the _____ day of _____ A.D., 20____

County Recorder _____

BY _____ Deputy

DOCUMENT NO. _____

STATEMENT OF EVIDENCE
(FROM M.B. Rude, TIE SHEET 509)

The notes of John Nelson, the County Surveyor, in 1901, show a post split between the Southwest and Southeast corners.

On October 25, 1977, we dug with the backhoe at an old fence line South extended North and at a newer fence line South extended North. The point falls in a lowland. The road has been filled about 2.5 feet above the natural ground. We dug a 3.5 foot deep hole, 1 foot into the natural ground. At 1 foot below the surface we found a 5" pointed post. At 1.5 feet below the surface we found a 4" square post with S 1/4 cut on side at the same location. Both post bases were set 1.5 feet into the natural ground. We offset post and backfilled the hole.

We set a 16" by 2 3/4" Cast Iron Monument marked quarter corner.

(2004)

In May 2004, E.G. Rud ran a survey around Section 36, and found the monument set by M.B. Rude. We established Kanabec County Coordinates on this location using G.P.S. equipment.