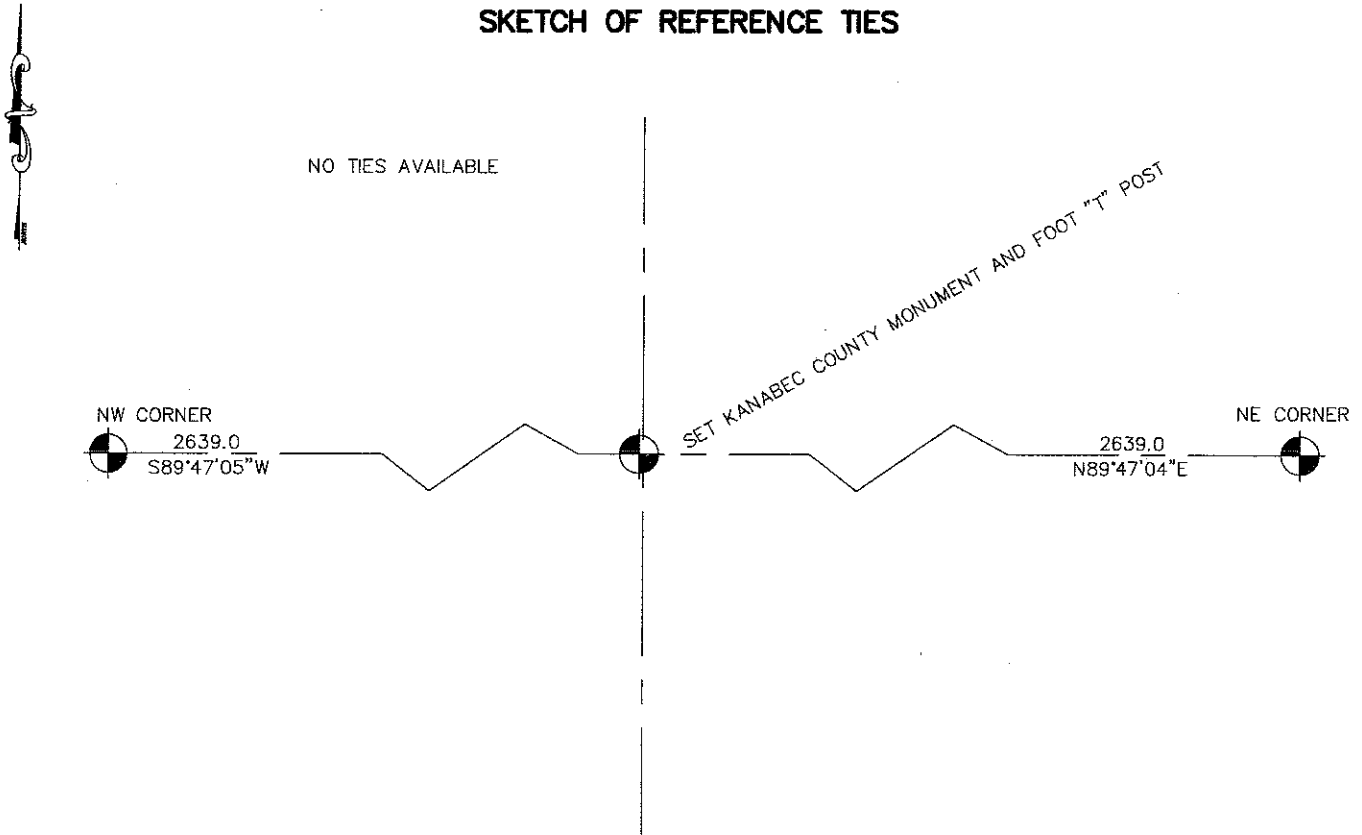


CERTIFICATE OF LOCATION OF GOVERNMENT CORNER

SOUTH QUARTER Corner of Section 33, Township 40, Range 24, 4TH P.M.
 STATE OF MINNESOTA, County of KANABEC

At the corner location shown on the sketch: SET #7 REBAR WITH ALUMINUM CAP AND ESTABLISHED KANABEC COUNTY COORDINATES ON ITS LOCATION.	Kanabec County U.S. Survey Feet Coordinates NAD 1983, HARN 1996 Adjustment Obtained by RTK GPS Observation Northing= <u>163833.29</u> Easting= <u>388379.41</u> Note: NAD 1983, HARN 1996 Adjustment coordinates are NOT compatible with NAD 1983 coordinates Note: 1 Meter=3937/1200 U.S. Survey Feet
--	--

SKETCH OF REFERENCE TIES



Statement of evidence relative to this corner location is on back of page.

I hereby certify that this document and the data contained herein was prepared by me or under my direct supervision.

Ernest Rud 12-10-2007
 Signature Date

Registration No. 9808

Land Surveyor, [] Professional Engineer
 [] County Surveyor, [] County Engineer

OFFICE OF THE COUNTY RECORDER

County of _____

I hereby certify that this document was filed in the County Recorder's office at _____ M. on the _____ day of _____ A.D., 20____

County Recorder _____
 BY _____ Deputy

DOCUMENT NO. _____

SOUTH QUARTER CORNER SECTION 33, T40, R24

STATEMENT OF EVIDENCE

THE ORIGINAL CORNER WAS SET BY DEPUTY SURVEYOR SILAS BARNARD ON SEPTEMBER 22, 1849 AND BEARING TREES ESTABLISHED. NO VISIBLE EVIDENCE REMAINS TO THE CORNER OR BEARING TREES.

A SUBSEQUENT SURVEY DONE BY HANDSCHU IS RECORDED IN BOOK A1 OF SURVEYS, PAGE 56 & 57 AND THE DATE IS NOT GIVEN. IN THE NOTES HANDSCHU STATED THE NORTH QUARTER CORNER POST WAS IN AND DISTANCES MEASURED TO THE NORTHEAST CORNER OF SECTION 4. IN MAY 2006 E.G. RUD AND SONS DID A SURVEY IN SECTION 33-40-24 AND LOCATED EXISTING MONUMENTATION AND LINES OF OCCUPATION. THIS CORNER FALLS ON THE CENTERLINE OF AN EAST-WEST GRAVEL ROAD AND A GRAVEL ROAD RUNNING NORTH.

ON JULY 17, 2007 AN EXCAVATION WAS MADE USING THE COUNTY BACKHOE.

NO EVIDENCE COULD BE FOUND. THEREFORE A PRO-RATED DISTANCE FROM THE NORTH QUARTER CORNER OF SECTION 5 TO THE NORTHEAST CORNER OF SECTION 4, WAS USED FROM THE HANDSCHU SURVEY. THIS FIT WITHIN 1 FOOT OF HANDSCHU'S MEASUREMENT AND FIT THE ROAD RUNNING NORTH.

A #7 REBAR WITH AN ALUMINUM CAP WAS SET AND KANABEC COUNTY COORDINATES ESTABLISHED ON THIS LOCATION.