

CERTIFICATE OF LOCATION OF GOVERNMENT CORNER

SOUTHEAST Corner of Section 32, Township 40, Range 24, 4TH P.M.
 STATE OF MINNESOTA, County of KANABEC

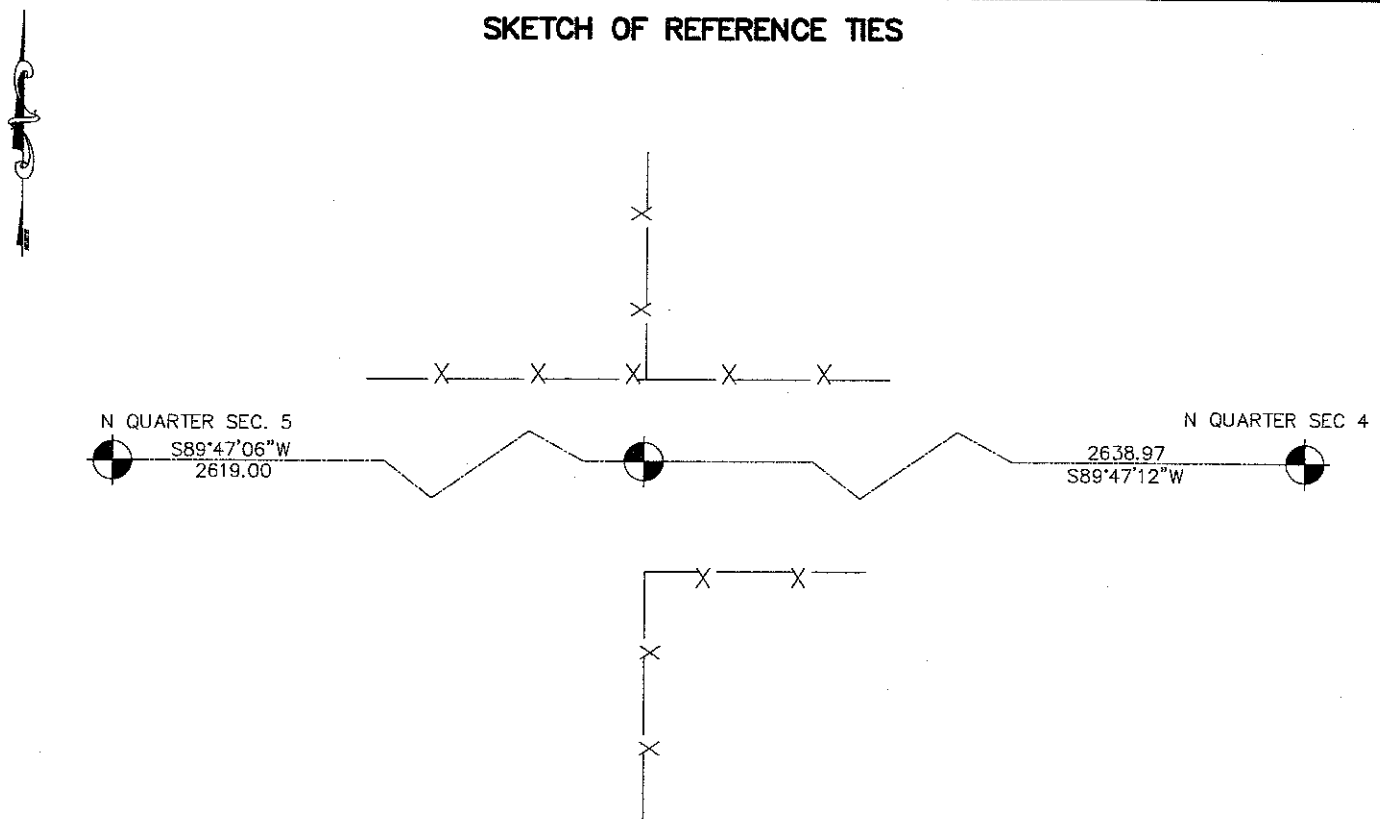
At the corner location shown on the sketch:
 SET #7 REBAR WITH ALUMINUM CAP
 AND ESTABLISHED KANABEC COUNTY COORDINATES ON ITS LOCATION.

Kanabec County U.S. Survey Feet Coordinates
 NAD 1983, HARN 1996 Adjustment
 Obtained by RTK GPS Observation

Northing= 163823.46
 Easting= 385740.46

Note: NAD 1983, HARN 1996 Adjustment
 coordinates are NOT compatible with
 NAD 1983 coordinates
 Note: 1 Meter=3937/1200 U.S. Survey Feet

SKETCH OF REFERENCE TIES



Statement of evidence relative to this corner location is on back of page.

I hereby certify that this document and the data contained herein was prepared by me or under my direct supervision.

Ernest J. Rud
 Signature

12-18-2007
 Date

Registration No. 9808

- Land Surveyor, Professional Engineer
 County Surveyor, County Engineer

OFFICE OF THE COUNTY RECORDER

County of _____

I hereby certify that this document was filed in the County Recorder's office at _____ M. on the _____ day of _____ A.D., 20____

County Recorder _____

BY _____ Deputy

DOCUMENT NO. _____

SOUTHEAST CORNER SECTION 32, T40, R24

STATEMENT OF EVIDENCE

THE ORIGINAL CORNER WAS SET BY DEPUTY SURVEYOR SILAS BARNARD ON SEPTEMBER 22, 1849 AND BEARING TREES ESTABLISHED. NO VISIBLE EVIDENCE REMAINS TO THE CORNER OR BEARING TREES.

A SUBSEQUENT SURVEY DONE BY HANDSCHU IS RECORDED IN BOOK A1 OF SURVEYS, PAGE 56 & 57 AND THE DATE IS NOT GIVEN. IN THE NOTES HANDSCHU STATED THE NORTH QUARTER CORNER POST WAS IN AND DISTANCES MEASURED TO THE NORTHEAST CORNER OF SECTION 4.

IN MAY 2006 E.G. RUD AND SONS DID A SURVEY IN SECTION 33-40-24 AND LOCATED EXISTING MONUMENTATION AND LINES OF OCCUPATION. THIS CORNER FALLS ON THE CENTERLINE OF AN EAST-WEST GRAVEL ROAD AND A OLD FENCE LINE RUNNING SOUTH AND NORTH.

ON JULY 17, 2007 AN EXCAVATION WAS MADE USING THE COUNTY BACKHOE.

NO EVIDENCE COULD BE FOUND. THEREFORE A PRO-RATED DISTANCE FROM THE NORTH QUARTER CORNER OF SECTION 5 TO THE NORTHEAST CORNER OF SECTION 4, WAS USED FROM THE HANDSCHU SURVEY. THIS FIT WITHIN 2 ~~FEET~~ OF HANDSCHU'S MEASUREMENT AND FIT THE FENCE NORTH AND SOUTH.

A #7 REBAR WITH AN ALUMINUM CAP WAS SET AND KANABEC COUNTY COORDINATES ESTABLISHED ON THIS LOCATION.