

# CERTIFICATE OF LOCATION OF GOVERNMENT CORNER

E 1/4  
W 1/4 Corner of Section 24, Township 40, Range 25, 4<sup>TH</sup> P.M.  
STATE OF MINNESOTA, County of KANABEC

At the corner location shown on the sketch:

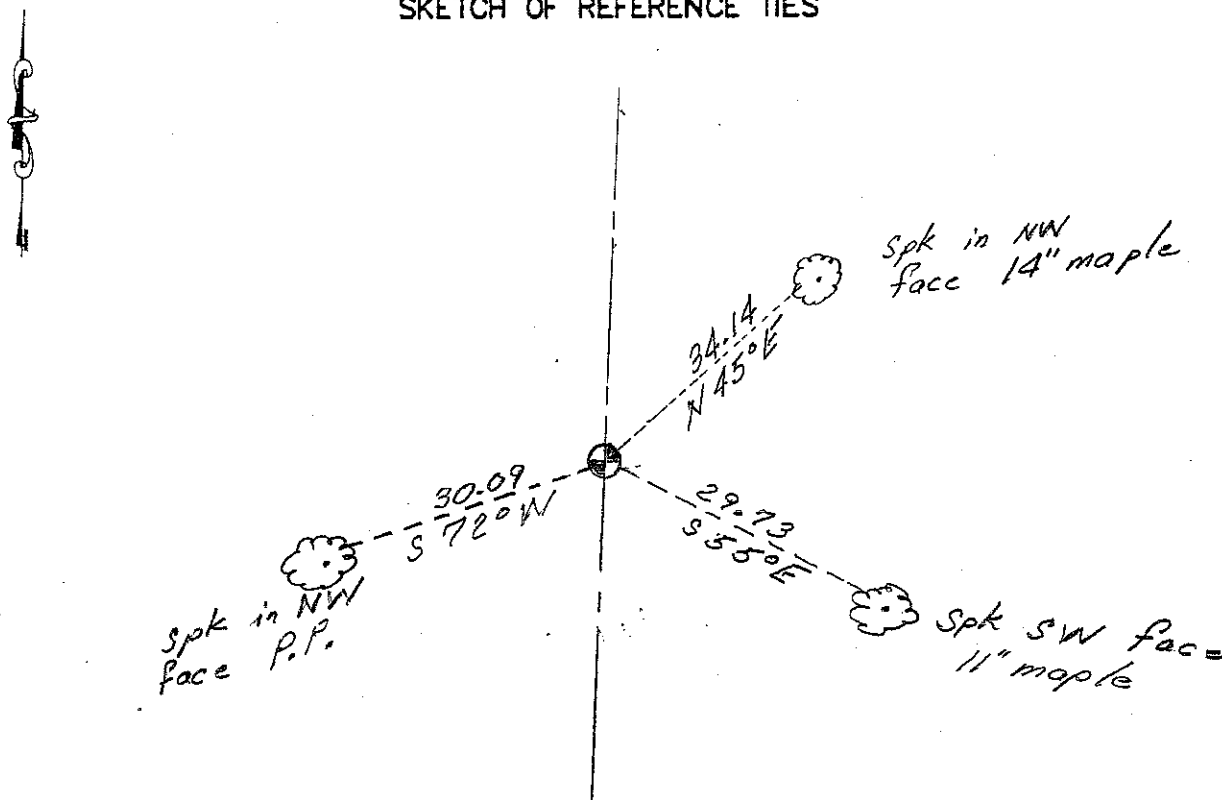
*On 4-18-12 found a cast iron monument down 12" in E of gravel road.*

Kanabec County U.S. Survey Feet Coordinates  
NAD 1983, HARN 1996 Adjustment  
Obtained by RTK GPS Observation

Northing= 177002.99  
Easting= 375454.91

Note: NAD 1983, HARN 1996 Adjustment coordinates are NOT compatible with NAD 1983 coordinates  
Note: 1 Meter=3937/1200 U.S. Survey Feet

## SKETCH OF REFERENCE TIES



Statement of evidence relative to this corner location is on back of page.

I hereby certify that this document and the data contained herein was prepared by me or under my direct supervision.

Ernest L. Rud 11-27-12  
Signature Date

Registration No. Minn No. 9808

Land Surveyor,  Professional Engineer  
 County Surveyor,  County Engineer

## OFFICE OF THE COUNTY RECORDER

County of \_\_\_\_\_

I hereby certify that this document was filed in the County Recorder's office at \_\_\_\_\_ M. on the \_\_\_\_\_ day of \_\_\_\_\_ A.D., 20\_\_\_\_

County Recorder \_\_\_\_\_

BY \_\_\_\_\_ Deputy

DOCUMENT NO. \_\_\_\_\_

STATEMENT OF EVIDENCE: EAST ¼ 24-40-25  
WEST ¼ 19-40-24

4025006/4024032

All of the original bearing trees are now gone.

There is no resurvey data on file for this corner.

In October of 1981, we measured the west line of Section 19 and located the lines of occupation. This corner falls in the center line of north-south road and a fence line east.

Mr. Robert Horne, the land owner of the Northwest Quarter of Section 19 stated that his dad had lived there from 1905 and he remembers when the road from the southwest corner of Section 19 to the west quarter of Section 19 was built and that there was a survey made at the time and the road was built on the section line. He does not remember if they found anything at the west quarter corner.

On October 13, 1981, we made an excavation with the County backhoe. The excavation was 15 feet square, 2.5 feet deep at this location. No evidence was found in the excavation.

I accepted the center line of the north-south road and the fence line east as the best available evidence of the original corner location. This location is in harmony with accepted lines of occupation.

On April 18, 2012, E.G. Rud & Sons found the CIM. New ties were taken and Kanabec County *coordinates* established.