

CERTIFICATE OF LOCATION OF GOVERNMENT CORNER

N.W. Corner of Section 18, Township 40, Range 24, 4TH P.M.

STATE OF MINNESOTA, County of KANABEC

At the corner location shown on the sketch:

FND - 7/8" x 36" CAPPED REBAR

11-23-13

Kanabec County U.S. Survey Feet Coordinates
NAD 1983, HARN 1996 Adjustment
Obtained by RTK GPS Observation

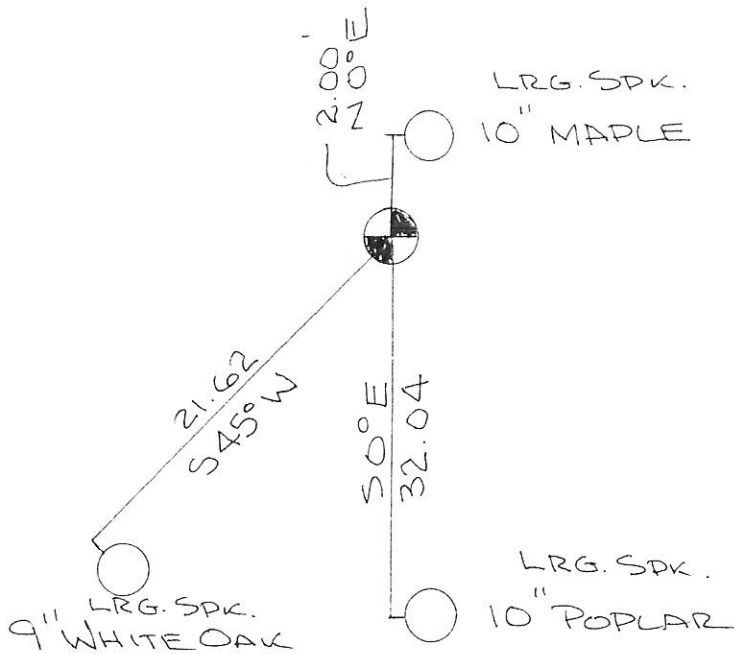
Northing= 184918.890

Easting= 375508.490

Note: NAD 1983, HARN 1996 Adjustment
coordinates are NOT compatible with
NAD 1983 coordinates

Note: 1 Meter=3937/1200 U.S. Survey Feet

SKETCH OF REFERENCE TIES



Statement of evidence relative to this corner location is on back of page.

I hereby certify that this document and the data contained herein was prepared by me or under my direct supervision.

Ernest J. Red
Signature

12-23-13
Date

Registration No. 9808

Land Surveyor, Professional Engineer

County Surveyor, County Engineer

OFFICE OF THE COUNTY RECORDER

County of _____

I hereby certify that this document was filed in the County Recorder's office at _____ M. on the _____ day of _____ A.D., 20____

County Recorder _____

BY _____ Deputy

DOCUMENT NO. _____

Northwest Corner Section 18

4024029

From Tie Sheet 854

All of the original government bearing trees are now gone.

In February of 1992, MB Rude made a survey around Section 13, Township 40, Range 25, and into the adjoining sections to locate the existing monuments, lines of occupation and to establish search areas.

They set the northwest corner of Section 18, Township 40, Range 24, on line and proportional distance between the northwest corner of Section 6, Township 40, Range 24, and the west quarter corner of Section 19, Township 40, Range 24.

On November 25, 2013 E.G. Rud and Sons found this monument, took new ties and established Kanabec County coordinates on this position.