

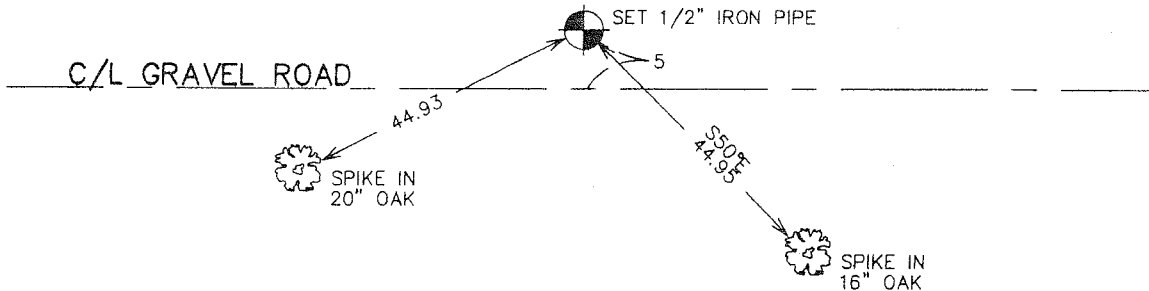
CERTIFICATE OF LOCATION OF GOVERNMENT CORNER

NORTH QUARTER Corner of Section 6, Township 40, Range 24, 4TH P.M.
 STATE OF MINNESOTA, County of KANABEC

At the corner location shown on the sketch:
 SET THIS MONUMENT
 AND ESTABLISHED G.P.S. COORDINATES ON ITS LOCATION.

Kanabec County U.S. Survey Feet Coordinates
 NAD 1983, HARN 1996 Adjustment
 Obtained by RTK GPS Observation
 Northing= 192172.58
 Easting= 377790.72
 Note: NAD 1983, HARN 1996 Adjustment
 coordinates are NOT compatible with
 NAD 1983 coordinates
 Note: 1 Meter=3937/1200 U.S. Survey Feet

SKETCH OF REFERENCE TIES



Statement of evidence relative to this corner location is on back of page.

I hereby certify that this document and the data contained herein was prepared by me or under my direct supervision.

Ernest J. Glud 10-12-2006
 Signature Date

Registration No. 9808

Land Surveyor, Professional Engineer
 County Surveyor, County Engineer

OFFICE OF THE COUNTY RECORDER

County of _____

I hereby certify that this document was filed in
 the County Recorder's office at _____ M. on the
 _____ day of _____ A.D., 20____

County Recorder _____

BY _____ Deputy

DOCUMENT NO. _____

NORTH QUARTER CORNER SECTION 6, T40, R24

STATEMENT OF EVIDENCE

THIS CORNER WAS NOT SET IN THE ORIGINAL GOVERNMENT SURVEY AS IT FALLS ON A CORRECTION LINE.

THEREFORE WE SET THIS CORNER ON THE SOUTH LINE OF T41, R24 AND AT A PROPORTIONAL MEASUREMENT BETWEEN THE NORTHEAST AND NORTHWEST CORNER OF SECTION 6.