

CERTIFICATE OF LOCATION OF GOVERNMENT CORNER

NORTHEAST Corner of Section 6, Township 40, Range 24, 4TH P.M.

STATE OF MINNESOTA, County of KANABEC

At the corner location shown on the sketch:

FOUND THIS CORNER AND ESTABLISHED G.P.S. COORDINATES ON ITS LOCATION.

Kanabec County U.S. Survey Feet Coordinates
NAD 1983, HARN 1996 Adjustment
Obtained by RTK GPS Observation

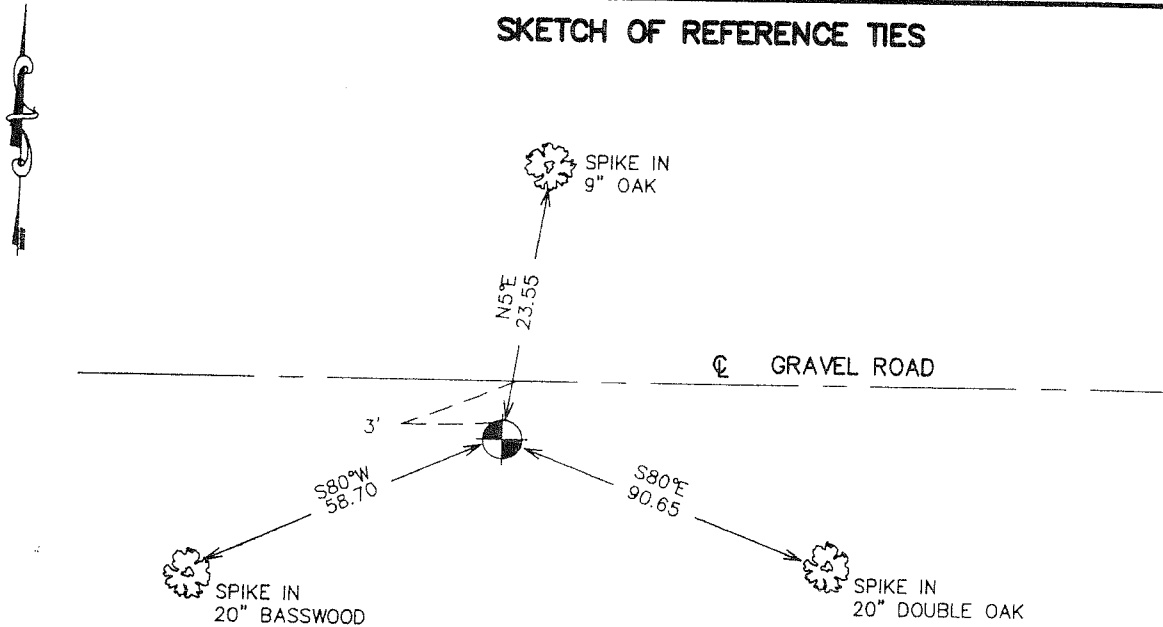
Northing= 192148.48

Easting= 380426.09

Note: NAD 1983, HARN 1996 Adjustment coordinates are NOT compatible with NAD 1983 coordinates

Note: 1 Meter=3937/1200 U.S. Survey Feet

SKETCH OF REFERENCE TIES



Statement of evidence relative to this corner location is on back of page.

I hereby certify that this document and the data contained herein was prepared by me or under my direct supervision.

Ernest Alred
Signature Date 10-12-2006

Registration No. Minn No 9808

Land Surveyor, Professional Engineer
 County Surveyor, County Engineer

OFFICE OF THE COUNTY RECORDER

County of _____

I hereby certify that this document was filed in the County Recorder's office at _____ M. on the _____ day of _____ A.D., 20____

County Recorder _____

BY _____ Deputy

DOCUMENT NO. _____

NORTHEAST CORNER SECTION 6, T40, R24

STATEMENT OF EVIDENCE

ALL OF THE ORIGINAL BEARING TREES ARE NOW GONE.

THERE IS A ROAD ORDER SURVEY BY CHARLES PETERSON IN 1916 FOR AN EAST-WEST TOWNSHIP ROAD, BUT NO RECORD OF WHAT WAS FOUND OR SET AT THIS CORNER.

IN JULY OF 1981, M.B. RUDE RAN A SURVEY ALONG THE TOWNSHIP LINE FROM THE SOUTHEAST CORNER OF SECTION 33 TO THE SOUTHWEST CORNER OF SECTION 31.

AN EXCAVATION WAS MADE WITH A BACKHOE. IT WAS 25 FEET LONG EAST-WEST AND 12 FEET WIDE NORTH AND SOUTH IN THE OLD ROAD BED AT THE PROPORTIONAL DISTANCE. NO EVIDENCE WAS FOUND IN THE EXCAVATION.

THE ONLY LINES OF OCCUPATION IS THE OLD EAST-WEST TOWNSHIP ROAD.

THIS CORNER WAS SET ON THE TOWNSHIP LINE BETWEEN THE SOUTHEAST CORNER AND SOUTH QUARTER CORNER OF SECTION 33, TOWNSHIP 41, RANGE 24, AND AT A PROPORTIONAL MEASUREMENT.

IN FEBRUARY 2006 E.G. RUD AND SONS RAN A SURVEY ALONG THIS CORRECTION LINE AND FOUND THIS MONUMENT, TOOK NEW TIES AND ESTABLISHED KANABEC COUNTY COORDINATES ON THE POSITION USING G.P.S. EQUIPMENT.