

CERTIFICATE OF LOCATION OF GOVERNMENT CORNER

NORTHEAST Corner of Section 5, Township 40, Range 24, 4TH P.M.

STATE OF MINNESOTA, County of KANABEC

At the corner location shown on the sketch:

FOUND THIS CORNER
AND ESTABLISHED G.P.S. COORDINATES ON ITS LOCATION.

Kanabec County U.S. Survey Feet Coordinates
NAD 1983, HARN 1996 Adjustment
Obtained by RTK GPS Observation

Northing= 192120.28

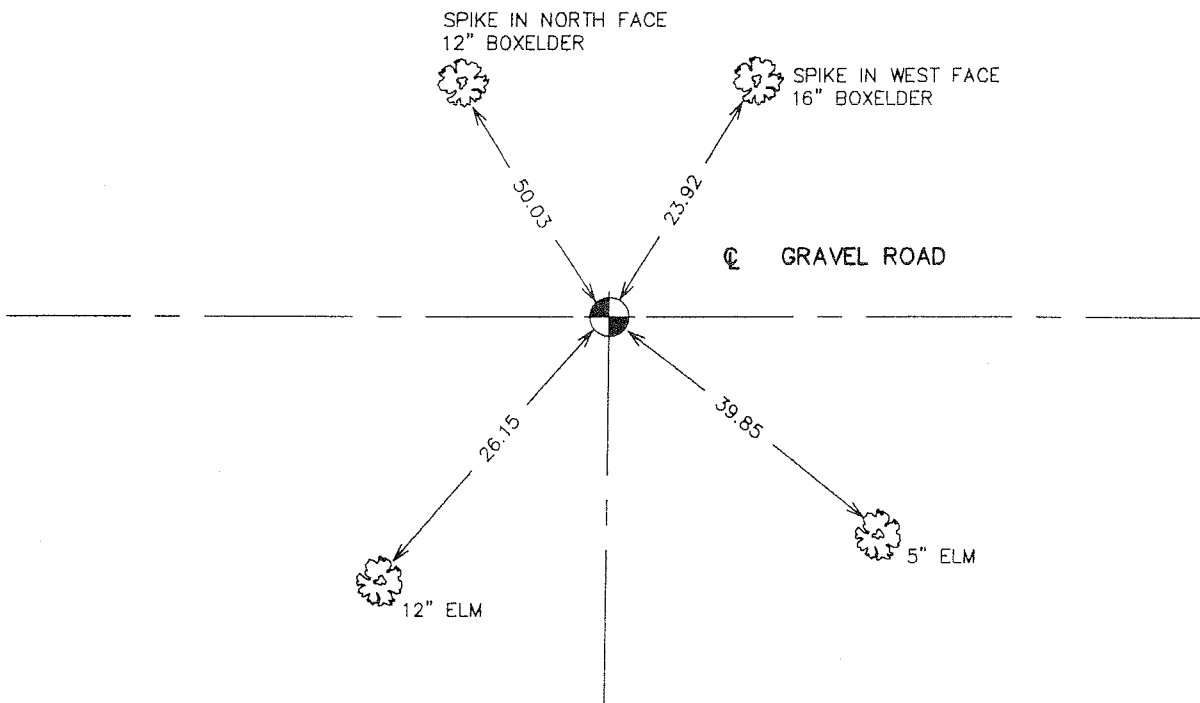
Easting= 385591.69

Note: NAD 1983, HARN 1996 Adjustment
coordinates are NOT compatible with
NAD 1983 coordinates

Note: 1 Meter=3937/1200 U.S. Survey Feet

SKETCH OF REFERENCE TIES

TIES ARE TO A SPK. IN
BLAZE IN NEAR FACE



Statement of evidence relative to this corner location is on back of page.

I hereby certify that this document and the data contained herein was prepared by me or under my direct supervision.

Ernest Illud Signature 10-12-2006 Date

Registration No. Minn No 9808

- Land Surveyor, Professional Engineer
- County Surveyor, County Engineer

OFFICE OF THE COUNTY RECORDER

County of _____

I hereby certify that this document was filed in the County Recorder's office at _____ M. on the

_____ day of _____ A.D., 20____

County Recorder _____

BY _____ Deputy

DOCUMENT NO. _____

NORTHEAST CORNER SECTION 5, T40, R24

STATEMENT OF EVIDENCE

ALL OF THE ORIGINAL BEARING TREES ARE NOW GONE.

THERE IS A TOWNSHIP ROAD ORDER ON FILE FOR AN EAST-WEST TOWNSHIP ROAD SURVEY ALONG THE TOWN LINE BY CHARLES PETERSON IN 1916 AND A TOWNSHIP ROAD ORDER ON FILE FOR A TOWNSHIP ROAD SOUTH ON THE SECTION LINE BETWEEN SECTIONS 4 AND 5 AND 8 AND 9 IN 1906.

IN JULY OF 1981, M.B. RUDE RAN A SURVEY ALONG THE TOWNSHIP LINE FROM THE SOUTHEAST CORNER OF SECTION 33 TO THE SOUTHWEST CORNER OF SECTION 31.

AN EXCAVATION WAS MADE WITH A BACKHOE 20 FEET SQUARE AT THE INTERSECTIONS OF ROADS EAST, WEST AND SOUTH.

NO EVIDENCE WAS FOUND IN THE EXCAVATION.

M.B. RUDE SET THIS CORNER ON LINE BETWEEN THE SOUTHEAST CORNER AND SOUTH QUARTER CORNER OF SECTION 34, TOWNSHIP 41, RANGE 24, AND AT THE CENTERLINE OF THE ROAD SOUTH, PER THE TOWN ROAD ORDER DATED 1906.

IN FEBRUARY 2006 E.G. RUD AND SONS RAN A SURVEY ALONG THIS CORRECTION LINE, FOUND THE MONUMENT, VERIFIED OR TOOK NEW TIES AND ESTABLISHED KANABEC COUNTY COORDINATES USING G.P.S. EQUIPMENT.