

CERTIFICATE OF LOCATION OF GOVERNMENT CORNER

NORTHEAST Corner of Section 3, Township 40, Range 24, 4TH P.M.

STATE OF MINNESOTA, County of KANABEC

At the corner location shown on the sketch:

FOUND THIS MONUMENT
AND ESTABLISHED KANABEC COUNTY COORDINATES ON ITS LOCATION.

Kanabec County U.S. Survey Feet Coordinates
NAD 1983, HARN 1996 Adjustment
Obtained by RTK GPS Observation

Northing= 192037.50

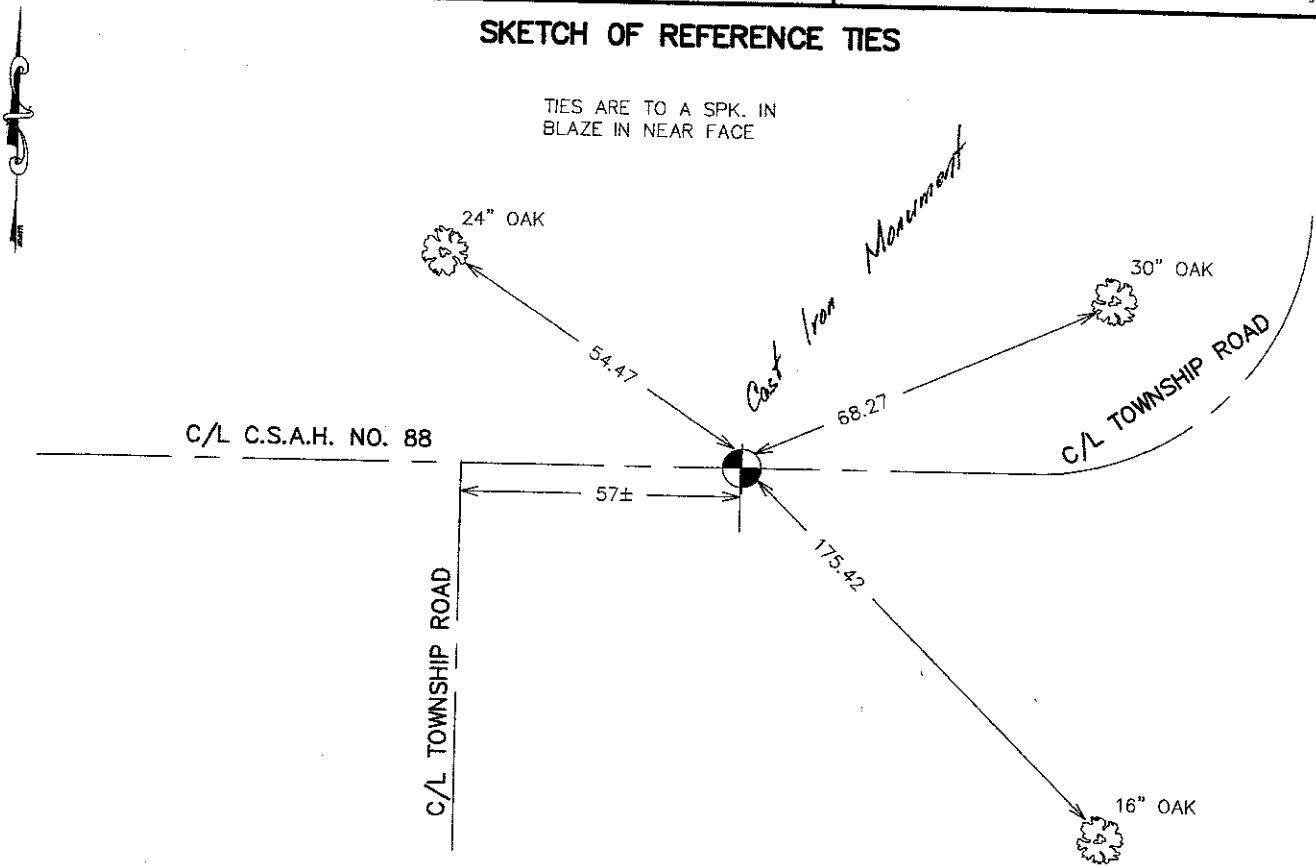
Easting= 396245.26

Note: NAD 1983, HARN 1996 Adjustment
coordinates are NOT compatible with
NAD 1983 coordinates

Note: 1 Meter=3937/1200 U.S. Survey Feet

SKETCH OF REFERENCE TIES

TIES ARE TO A SPK. IN
BLAZE IN NEAR FACE



Statement of evidence relative to this corner location is on back of page.

I hereby certify that this document and the data contained herein was prepared by me or under my direct supervision.

Ernest L. Paul
Signature

8-20-2007
Date

Registration No. Minn No 9808

Land Surveyor, Professional Engineer

County Surveyor, County Engineer

OFFICE OF THE COUNTY RECORDER

County of _____

I hereby certify that this document was filed in the County Recorder's office at _____ M. on the _____ day of _____ A.D., 20____

County Recorder _____

BY _____ Deputy

DOCUMENT NO. _____

NORTHEAST CORNER SECTION 3, T40, R24

STATEMENT OF EVIDENCE

ALL OF THE ORIGINAL BEARING TREES ARE NOW GONE.

CHARLES HANDSCHU, A LAND SURVEYOR, MADE A SURVEY OF KNIFE LAKE IN 1927 AND HAS MADE A COMPUTED LOCATION FOR THIS CORNER.

M.B. RUDE RAN A SURVEY AROUND SECTION 3 AND SECTION 10 AND SET A 2 3/4" BY 19" CAST IRON MONUMENT ON LINE BETWEEN THE SOUTHEAST AND SOUTHWEST CORNERS OF SECTION 36, TOWNSHIP 41, RANGE 23, ON THE CORRECTION LINE 252.2 FEET WEST OF THE SOUTHEAST CORNER OF SECTION 36 PER HANDSCHU'S SURVEY MAP OF 1927.

IN 2006 E.G. RUD AND SONS FOUND THIS MONUMENT AND ESTABLISHED KANABEC COUNTY COORDINATES ON ITS LOCATION USING G.P.S. EQUIPMENT.