

# CERTIFICATE OF LOCATION OF GOVERNMENT CORNER

E 1/4 Corner of Section 12, Township 40, Range 24, 4<sup>TH</sup> P.M.  
STATE OF MINNESOTA, County of KANABEC

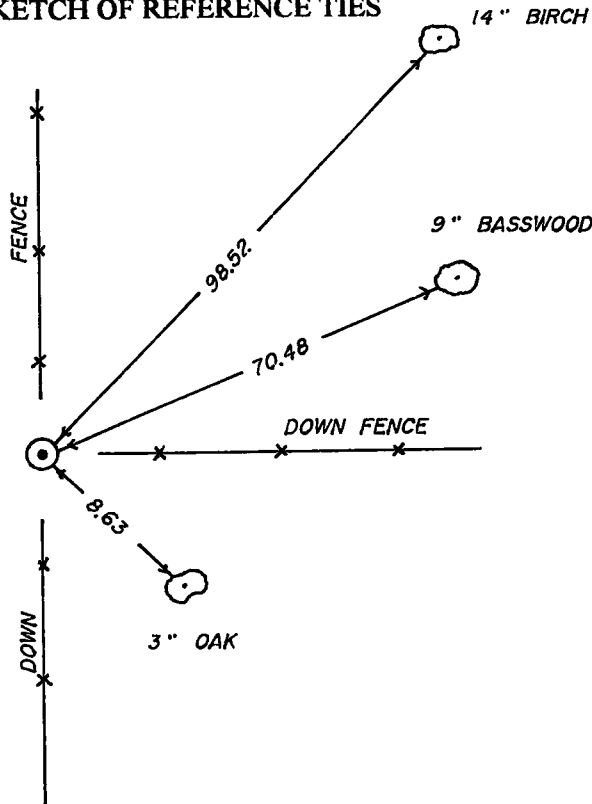
At the corner location shown on the sketch

On 11-21-96 found a 60 D SPK.  
Date

[ ] left monument as found, [ ] lowered monument,  removed monument (explain)

On 11-21-96 placed a 7/8" x 36" CAPPED REBAR  
Date

### SKETCH OF REFERENCE TIES



TIES ARE TO A SPK. IN  
BLAZE IN NEAR FACE

Statement of evidence relative to this corner location is on back of page.

I hereby certify that this document and the data contained herein was prepared by me or under my direct supervision.

M. B. [Signature] 12-10-96  
Signature Date

Registration No. 8195

Land Surveyor, [ ] Professional Engineer

[ ] County Surveyor, [ ] County Engineer

### OFFICE OF THE COUNTY RECORDER

County of Kanabec

I hereby certify that this document was filed in the County Recorder's office at 2:00 P M. on the 23<sup>rd</sup> day of January A.D., 19 97

County Recorder Rhonda A. Olsm  
By \_\_\_\_\_ Deputy

DOCUMENT NO. \_\_\_\_\_

61

## STATEMENT OF EVIDENCE

All of the original government bearing trees are now gone.

In the 1930's or 1940's, Registered Land Surveyor, Charles Handschu, used a fence corner for this corner per his notes on file at the County Surveyor's Office in Kanabec County.

In 1975, we found a spike in the top of a fence corner post. The post was leaning south. We set a spike at the base of the post and used this location in a survey in Section 7, Township 40, Range 23.

On November 21, 1996, we searched this area and found evidence of downed fences running north, south and east, and a spike at the location of the old corner fence post now lying down.

We replaced the found spike with a 7/8" capped rebar at the perpetuated location of this corner.