

CERTIFICATE OF LOCATION OF GOVERNMENT CORNER

EAST QUARTER Corner of Section 13, Township 40, Range 24, 4TH P.M.
 STATE OF MINNESOTA, County of KANABEC

At the corner location shown on the sketch:

SET THIS MONUMENT
 AND ESTABLISHED KANABEC COUNTY COORDINATES ON ITS LOCATION.

Kanabec County U.S. Survey Feet Coordinates
 NAD 1983, HARN 1996 Adjustment
 Obtained by RTK GPS Observation

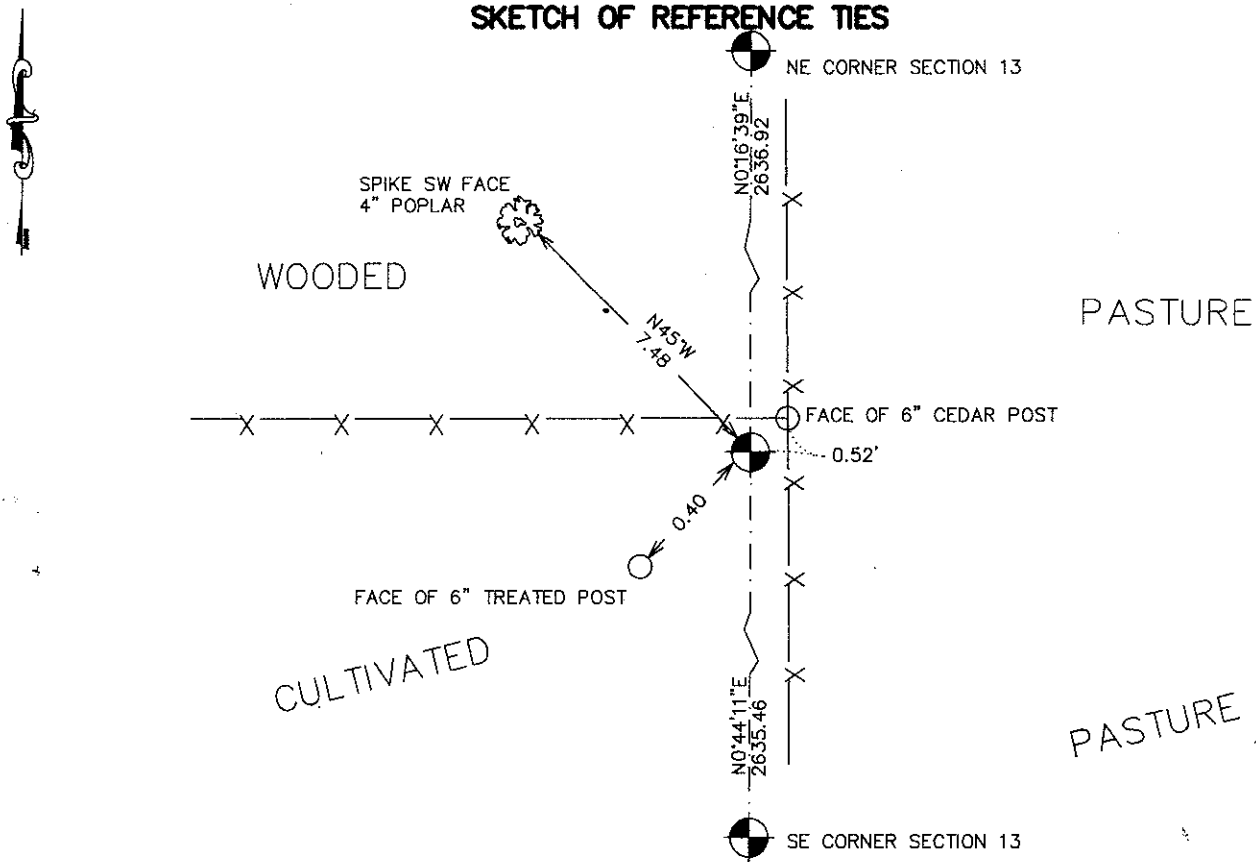
Northing= 182281.24

Easting= 406878.97

Note: NAD 1983, HARN 1996 Adjustment
 coordinates are NOT compatible with
 NAD 1983 coordinates

Note: 1 Meter=3937/1200 U.S. Survey Feet

SKETCH OF REFERENCE TIES



Statement of evidence relative to this corner location is on back of page.

I hereby certify that this document and the data contained herein was prepared by me or under my direct supervision.

Ernest J. Rud 10-05-2007
Signature Date

Registration No. 9808

- Land Surveyor, Professional Engineer
 County Surveyor, County Engineer

OFFICE OF THE COUNTY RECORDER

County of _____

I hereby certify that this document was filed in the County Recorder's office at _____ M. on the _____ day of _____ A.D., 20____

County Recorder _____

BY _____ Deputy

DOCUMENT NO. _____

EAST QUARTER CORNER SECTION 13, T40, R24

STATEMENT OF EVIDENCE

THE ORIGINAL POST WAS SET BY DEPUTY SURVEYOR JOHN M. GLEY ON SEPTEMBER 26, 1849 AND TWO BEARING TREES ESTABLISHED. NO VISIBLE EVIDENCE REMAINS FOR THE CORNER OR BEARING TREES.

NO RECORDS OF ANY ROAD OPENINGS COULD BE FOUND AT THE COUNTY AUDITORS OFFICE.

THERE IS A SURVEY BY J.B. VICKEREY UNDATED BUT DONE SOMEWHERE AROUND 1900. THERE IS RECORDED ON PAGE 206 OF BOOK A OF SURVEYS. THIS SURVEY RAN FROM THE SOUTHEAST CORNER OF SECTION 36 TO THE NORTHEAST CORNER OF SECTION 13. NO RECORD OF WHAT WAS FOUND OR SET BUT EACH SECTION WAS RECORDED AT 80 CHAINS. IN MAY 2003 E.G.RUD AND SONS RAN A SURVEY AROUND SECTION 13 TO LOCATE EXISTING MONUMENTS, LINES OF OCCUPATION, AND SEARCH AREAS. THIS CORNER FALLS AT THE INTERSECTION OF FENCES RUNNING NORTH, SOUTH, AND WEST. E.G.RUD SET A MONUMENT AT THE INTERSECTION OF THE FENCES AS THIS WAS THE BEST EVIDENCE OF THE PERPETUATION OF THIS CORNER. THIS POSITION FALLS WITHIN 0.70 FEET OF BEING ON A PROPORTIONATE DISTANCE BETWEEN THE NORTHEAST AND SOUTHEAST CORNERS OF SECTION 13. A # 7 REBAR WAS SET, TIES TAKEN, AND KANABEC COUNTY COORDINATES ESTABLISHED ON THIS CORNER.