

CERTIFICATE OF LOCATION OF GOVERNMENT CORNER

NORTHWEST Corner of Section 19, Township 40, Range 23, 4TH P.M.

STATE OF MINNESOTA, County of KANABEC

At the corner location shown on the sketch:
 IN OCTOBER 2005 FOUND THIS MONUMENT
 AND ESTABLISHED G.P.S. COORDINATES ON ITS LOCATION.

Kanabec County U.S. Survey Feet Coordinates
 NAD 1983, HARN 1996 Adjustment
 Obtained by RTK GPS Observation

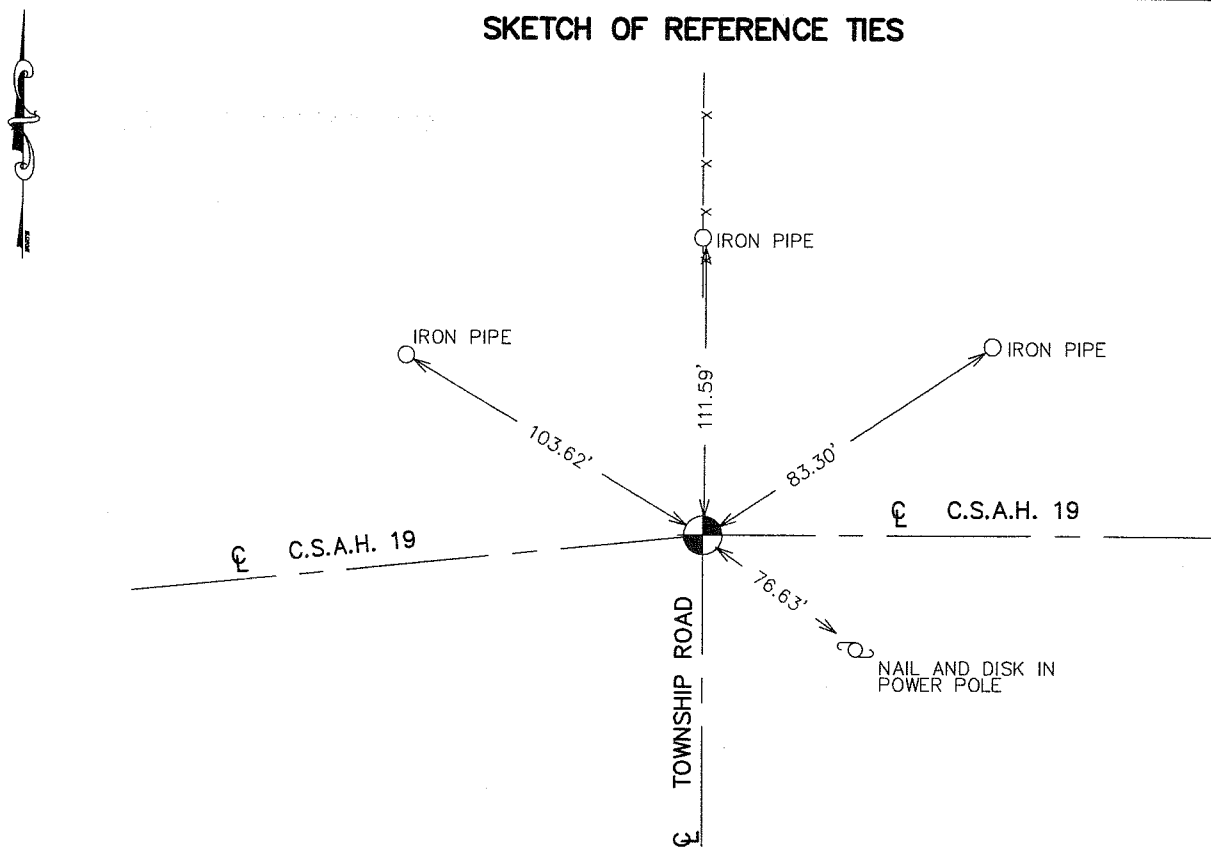
Northing= 179646.04

Easting= 406845.09

Note: NAD 1983, HARN 1996 Adjustment
 coordinates are NOT compatible with
 NAD 1983 coordinates

Note: 1 Meter=3937/1200 U.S. Survey Feet

SKETCH OF REFERENCE TIES



Statement of evidence relative to this corner location is on back of page.

I hereby certify that this document and the data contained herein was prepared by me or under my direct supervision.

Ernest L. Rud 1-23-2006
 Signature Date

Registration No. Minn No 9808

Land Surveyor, Professional Engineer

County Surveyor, County Engineer

OFFICE OF THE COUNTY RECORDER

County of _____

I hereby certify that this document was filed in the County Recorder's office at _____ M. on the _____ day of _____ A.D., 20____

County Recorder _____

BY _____ Deputy

DOCUMENT NO. _____

STATEMENT OF EVIDENCE

ALL OF THE ORIGINAL BEARING TREES ARE NOW GONE.

THERE IS A SURVEY ON FILE AT THE COUNTY RECORDERS OFFICE DATED 1899 BY NESS STODIN, WHICH STARTS AT THE SOUTH QUARTER CORNER OF SECTION 13 AND RUNS EAST 80 RODS, NORTH 40 RODS, EAST 80 RODS, SOUTH 40 RODS TO THE SOUTHEAST CORNER OF SECTION 13, BUT DOES NOT SHOW WHAT WAS FOUND OR SET AT THESE CORNERS.

IN AUGUST OF 1981, M.B. RUDE RAN A SURVEY NORTH 1 MILE, SOUTH 1 MILE, EAST 1/2 MILE AND WEST 1/2 MILE AND LOCATED THE EXISTING MONUMENTS.

THIS CORNER FALLS AT THE INTERSECTION OF ROADS EAST AND SOUTH AND FENCE LINES NORTH.

ON AUGUST 4TH, 1981 AN EXCAVATION WAS MADE WITH THE COUNTY BACKHOE AT THIS LOCATION. THE EXCAVATION WAS ~~###~~ 15 FEET SQUARE AND 2.5 FEET DEEP. NO EVIDENCE WAS FOUND IN THE EXCAVATION.

THE INTERSECTION OF ROADS EAST AND SOUTH AND FENCE LINE NORTH WAS ACCEPTED AS THE BEST AVAILABLE EVIDENCE OF THE ORIGINAL CORNER AND A 4" BY 17" CAST IRON MONUMENT WAS SET AT THIS LOCATION. THIS IS WITHIN 1 FOOT OF A PROPORTIONAL MEASUREMENT BETWEEN THE SOUTHEAST CORNER OF SECTION 24 AND THE NORTHEAST CORNER OF SECTION 13 AND IS 24 FEET WEST OF A STRAIGHT LINE.

ALL REFERENCE TIES WERE INTACT.

THE ROADWAY WAS REGRADED IN 1992, KANABEC COUNTY HIGHWAY DEPARTMENT LOCATED THE SECTION CORNER PRIOR TO CONSTRUCTION AND PLACED ADDITIONAL REFERENCES OUTSIDE OF THE NEW CONSTRUCTION LIMITS.

BEFORE THE ROADWAY WAS PAVED THE CORNER WAS RE-ESTABLISHED ACCORDING TO REFERENCES OBTAINED PREVIOUSLY. ADDITIONAL REFERENCES WERE ALSO PLACED.

IN OCTOBER 2005 THIS CORNER WAS RELOCATED AND KANABEC COUNTY COORDINATES WERE ESTABLISHED ON THIS POSITION USING G.P.S. EQUIPMENT.