

# CERTIFICATE OF LOCATION OF GOVERNMENT CORNER

NW corner  
NE " Corner of Section 30<sup>30</sup> 25<sup>40</sup>, Township 40<sup>40</sup>, Range 05<sup>23</sup>, 4th P.M.

STATE OF MINNESOTA, County of KANABEC

At the corner location shown on the sketch:

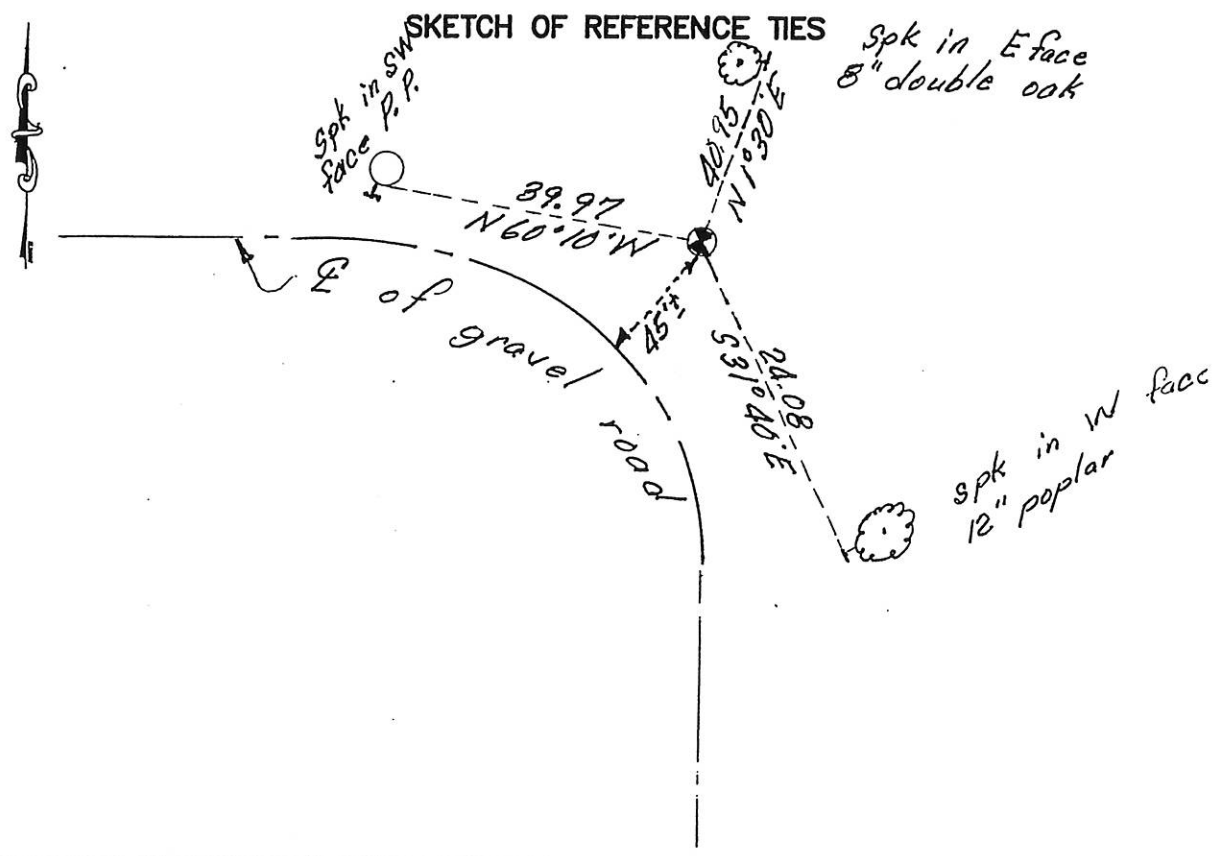
*Found cast aluminum monument  
down 0.2'*

Kanabec County U.S. Survey Feet Coordinates  
NAD 1983, HARN 1996 Adjustment  
Obtained by RTK GPS Observation

Northing= 174374.74  
Easting= 406846.51

Note: NAD 1983, HARN 1996 Adjustment  
coordinates are NOT compatible with  
NAD 1983 coordinates

Note: 1 Meter=3937/1200 U.S. Survey Feet



Statement of evidence relative to this corner location is on back of page.

I hereby certify that this document and the data contained herein was prepared by me or under my direct supervision.

*Ernest L. Rud*  
Signature

10-1-2014  
Date

Registration No. 9808

- Land Surveyor,     Professional Engineer  
 County Surveyor,     County Engineer

## OFFICE OF THE COUNTY RECORDER

County of \_\_\_\_\_

I hereby certify that this document was filed in the County Recorder's office at \_\_\_\_\_ M. on the \_\_\_\_\_ day of \_\_\_\_\_ A.D., 20\_\_\_\_

County Recorder \_\_\_\_\_

BY \_\_\_\_\_ Deputy

DOCUMENT NO. \_\_\_\_\_

STATEMENT OF EVIDENCE

Northeast Corner Section 25, Township 40, Range 24

4024005

Northwest Corner Section 30, Township 40, Range 23

4023033

The original post was set by a deputy surveyor on September 26, 1849 and 4 bearing trees noted as;

11" Elm bearing South N 30° West at 8 Links

15" Birch bearing South 10° West at 45 Links

30" Pine bearing South 65° East at 16 Links

13" Pine bearing North 50° East at 26 Links

No evidence for the corner or bearing trees could be found.

A survey of Section 30 is recorded in book, Page 254 by Vickery in January 1900. He surveyed around the section and set all 1/16 corners but does not state what was found or set. He measured 2323.2' to the North quarter corner of 30 and today we measure 2308'. In August 1914 the Kanabec County Survey Crew did a survey around Section 25. Their notes also do not state what was at the Northeast corner of Section 25 but the distance to the Northwest corner was 5337 feet and to the Southeast corner was about 5245 feet. Today we measure 5335.44 and 5235 feet on these lines.

In early 1970's LeRoy Winner set a cast aluminum monument with magnets at the centerline of roads. On November 3, 1975 M.B. Rude found this monument and took 3 ties and recorded this as Certificate #429. In August, 2014 E.G. Rud & Sons found this monument and one remaining tie which checked. 3 new ties were taken and Kanabec County Coordinates established using GPS equipment. We accepted this monument as it fit the centerlines of roads and the distances agreed with the county measurement of 1914.