

CERTIFICATE OF LOCATION OF GOVERNMENT CORNER

EAST QUARTER Corner of Section 36, Township 40, Range 24, 4TH P.M.

STATE OF MINNESOTA, County of KANABEC

At the corner location shown on the sketch:
On 05/ /2004 Found a Kanabec County Monument.

Kanabec County U.S. Survey Feet Coordinates
NAD 1983, HARN 1996 Adjustment
Obtained by RTK GPS Observation

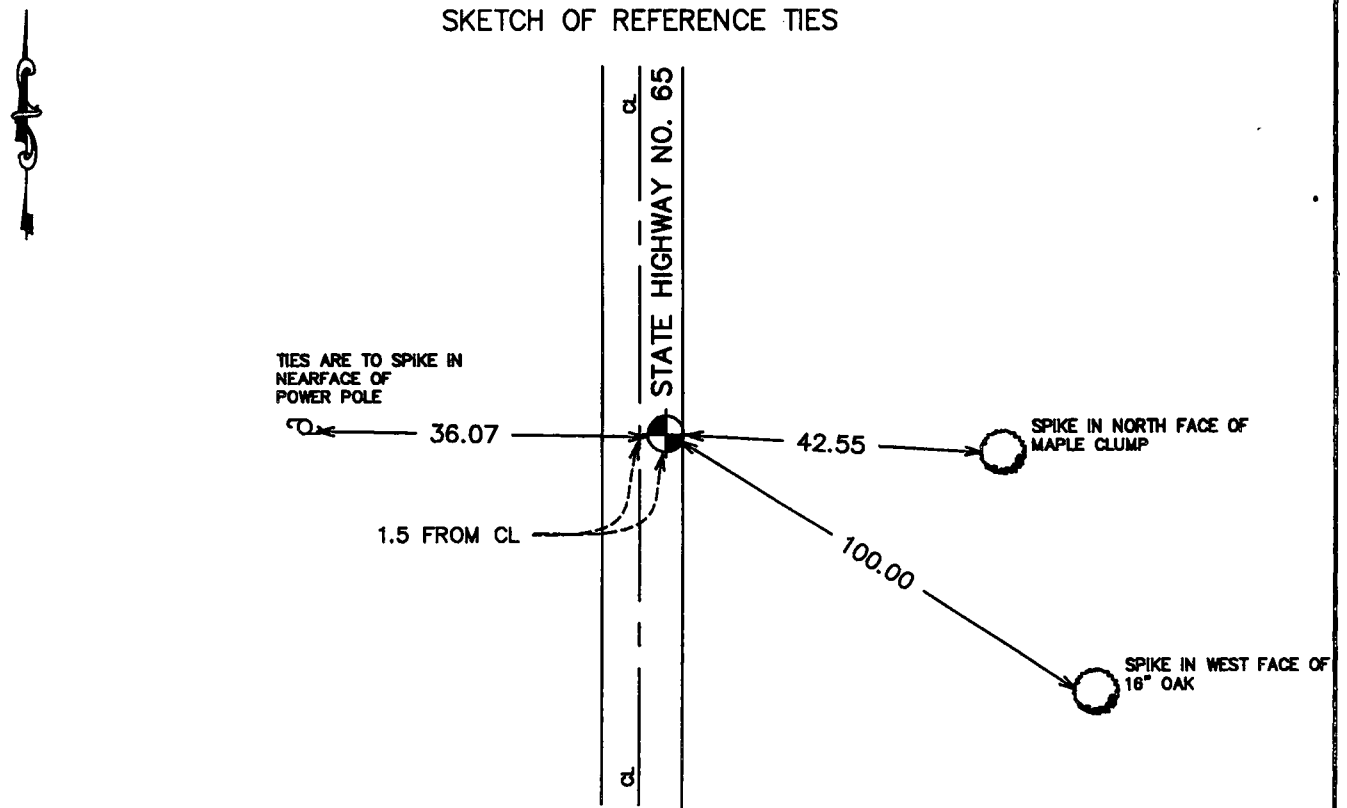
Northing= 166493.623

Easting= 406807.298

Note: NAD 1983, HARN 1996 Adjustment
coordinates are NOT compatible with
NAD 1983 coordinates

Note: 1 Meter=3937/1200 U.S. Survey Feet

SKETCH OF REFERENCE TIES



Statement of evidence relative to this corner location is on back of page.

I hereby certify that this document and the data contained herein was prepared by me or under my direct supervision.

Ernst Klud
Signature

6-14-2004
Date

Registration No. 9808

Land Surveyor, [] Professional Engineer

[] County Surveyor, [] County Engineer

OFFICE OF THE COUNTY RECORDER

County of Kanabec

I hereby certify that this document was filed in the County Recorder's office at 2 P.M. on the 25th day of June A.D., 2004

County Recorder R. Olson

BY K. Heimbrecht Deputy

DOCUMENT NO. _____

STATEMENT OF EVIDENCE
(FROM M.B. Rude , TIE SHEET 706)

All of the original bearing trees are now gone.

In 1901, the County Surveyor, Mr. John Nelson, set a post at this corner in a survey of Section 36.

I ran a survey from the southeast to the northeast corners of Section 36 and at the midpoint we made an excavation with a backhoe. The excavation was 2 feet below the road surface, 1 foot into the natural ground. We found evidence of rotted wood with a number of rocks piled around it. This location was accepted as the quarter corner post set by Nelson in 1901 and we replaced it with a 7/8" by 36" capped rebar.

(2004)

In May 2004, E.G. Rud ran a survey around Section 36, and found this monument. We established Kanabec County Coordinates on this location using G.P.S. equipment.