

CERTIFICATE OF LOCATION OF GOVERNMENT CORNER

NORTH QUARTER Corner of Section 29, Township 39, Range 25, 4TH P.M.

STATE OF MINNESOTA, County of KANABEC

At the corner location shown on the sketch:

FOUND LARGE, FLAT BOULDER AT CENTERLINE OF ROAD AND FENCE LINE GOING SOUTH. SET A 1/2 INCH PIPE WITH ALUMINUM CAP.

Kanabec County U.S. Survey Feet Coordinates
NAD 1983, HARN 1996 Adjustment
Obtained by RTK GPS Observation

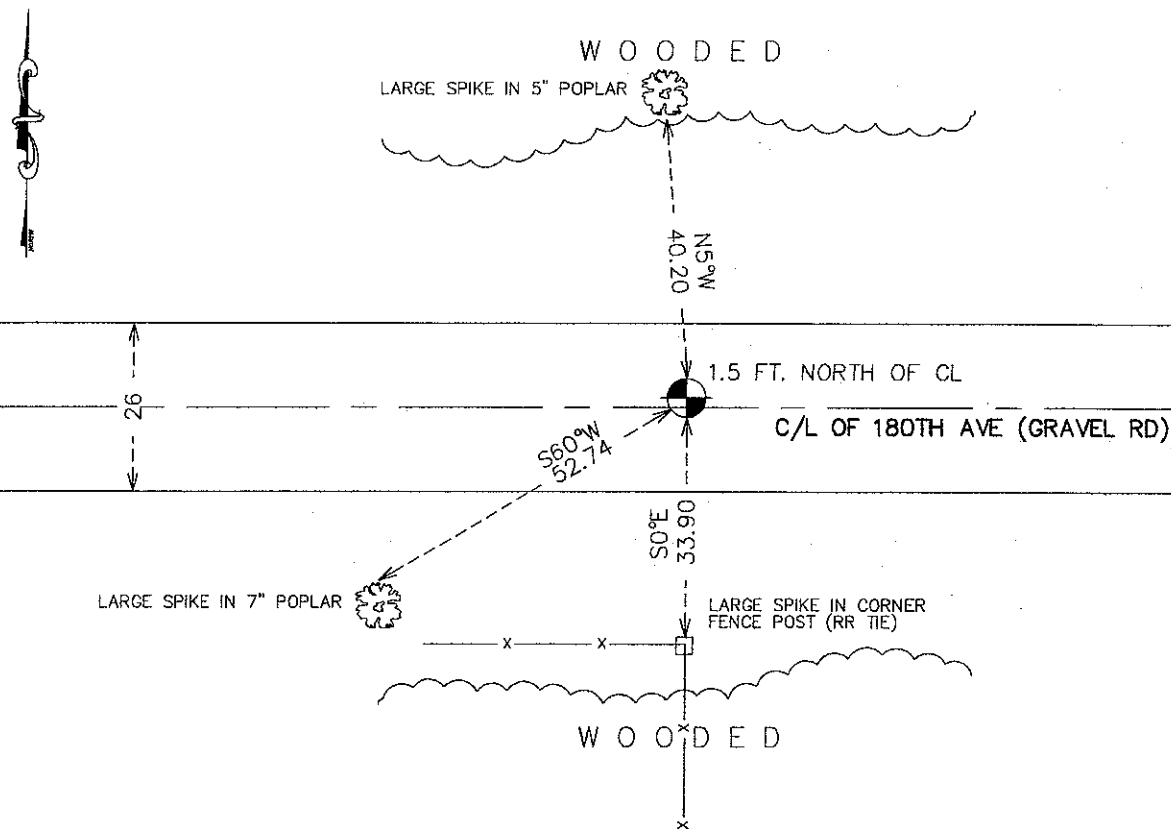
Northing= 144058.49

Easting= 351238.495

Note: NAD 1983, HARN 1996 Adjustment coordinates are NOT compatible with NAD 1983 coordinates

Note: 1 Meter=3937/1200 U.S. Survey Feet

SKETCH OF REFERENCE TIES



Statement of evidence relative to this corner location is on back of page.

I hereby certify that this document and the data contained herein was prepared by me or under my direct supervision.

Ernest J. Rub 10-17-2011
Signature Date

Registration No. 9808

Land Surveyor, [] Professional Engineer
[] County Surveyor, [] County Engineer

OFFICE OF THE COUNTY RECORDER

County of _____

I hereby certify that this document was filed in the County Recorder's office at _____ M. on the

_____ day of _____ A.D., 20__

County Recorder _____

BY _____ Deputy

DOCUMENT NO. _____

N1/4 CORNER, SEC. 29, T39, R25

STATEMENT OF EVIDENCE

THE ORIGINAL GOVERNMENT POST WAS SET BY DEPUTY SURVEYOR ISSAC BANKER IN JULY 1855 AND 2 BEARING TREES NOTED AS:

8" ELM @ 8 LINKS BEARING N48°E

10" WHITE BIRCH @ 18 LINKS BEARING S15°W

NO VISIBLE EVIDENCE REMAINS FOR THE CORNER OR BEARING TREES TODAY.

THIS CORNER FALLS IN THE CENTERLINE OF AN EAST-WEST GRAVEL ROAD AND THE NORTHERLY EXTENSION OF A FENCE RUNNING SOUTH.

THERE IS A ROAD OPENING ON FILE AT THE COUNTY AUDITOR'S OFFICE DATED JAN. 6, 1922, BUT NO SURVEY WAS MADE AT THAT TIME

IN NOV. 2010, E.G. RUD AND SONS, INC. MADE A SURVEY AROUND SEC. 29 AND 32 TO LOCATE EXISTING MONUMENTATION AND LINES OF OCCUPATION.

ON JULY 13, 2011 AN EXCAVATION WAS MADE AT THE CENTERLINE OF THE EAST-WEST ROAD AND THE FENCE RUNNING SOUTH. THE EXCAVATION WAS 10 FEET WIDE AND 20 FEET LONG AND 2.5 FEET DEEP. AT 2 FEET DOWN A LARGE, FLAT BOULDER WAS FOUND AT THE ORIGINAL GROUND LINE. NO MARKINGS COULD BE FOUND AND THE EXCAVATION CONTINUED. NO OTHER EVIDENCE WAS FOUND. THE FLAT STONE WAS CONSIDERED THE BEST EVIDENCE FOR THE PERPETUATION OF THIS CORNER. IT FIT WITHIN 3 FEET OF A LINE AND SPLIT BETWEEN THE NW AND NE CORNERS OF SEC. 29. A 1/2" IRON PIPE WAS SET, TIES WERE TAKEN AND KANABEC COUNTY COORDINATES WERE ESTABLISHED ON THIS POSITION.