

CERTIFICATE OF LOCATION OF GOVERNMENT CORNER

 EAST QUARTER Corner of Section 30 , Township 39 , Range 25 , 4TH P.M.

STATE OF MINNESOTA, County of KANABEC

At the corner location shown on the sketch:
 FOUND A #7 REBAR WITH ALUMINUM CAP PER CERT NO. 809.

Kanabec County U.S. Survey Feet Coordinates
 NAD 1983, HARN 1996 Adjustment
 Obtained by RTK GPS Observation

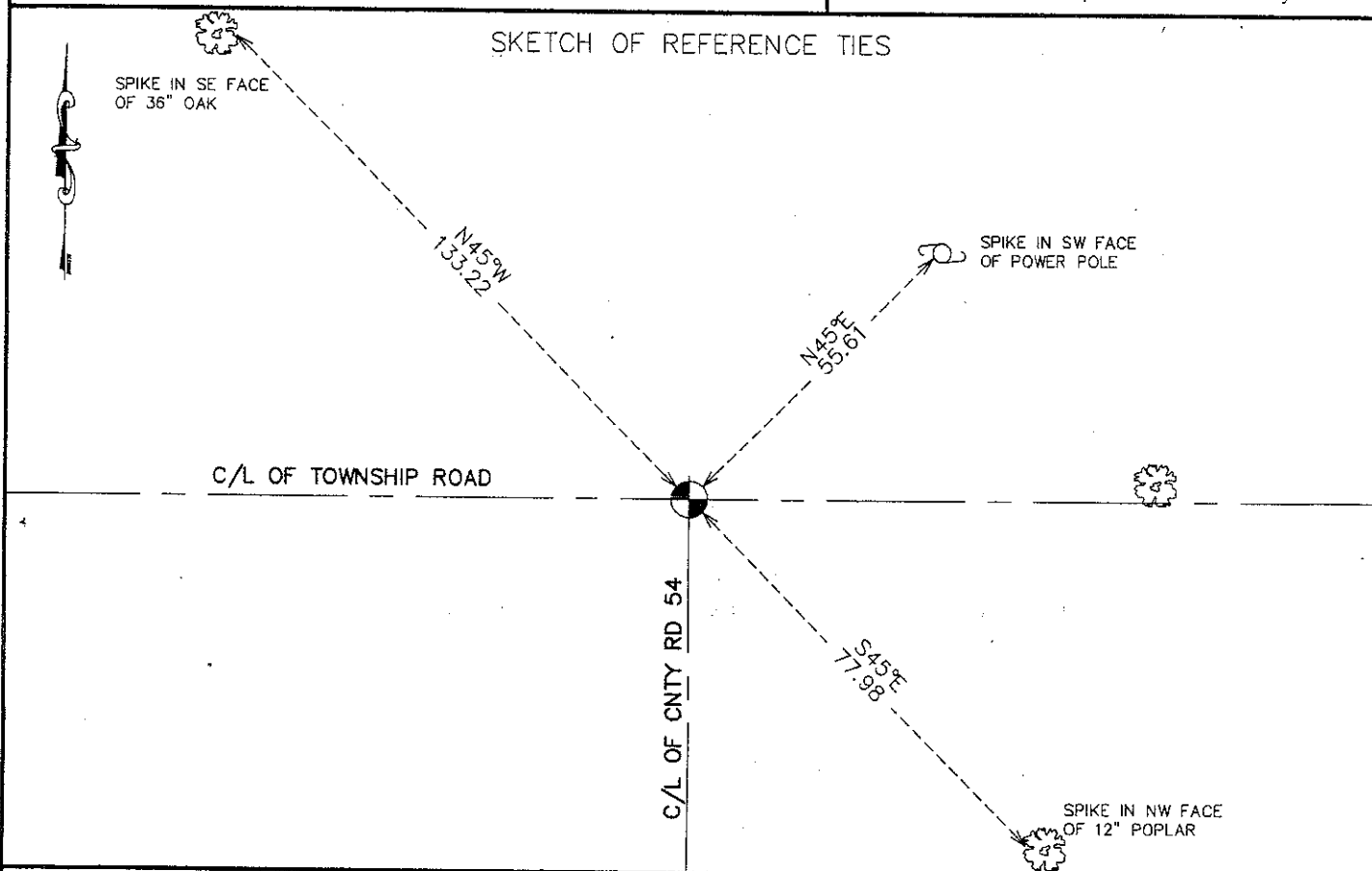
Northing= 141531.72

Easting= 348600.77

Note: NAD 1983, HARN 1996 Adjustment
 coordinates are NOT compatible with
 NAD 1983 coordinates

Note: 1 Meter=3937/1200 U.S. Survey Feet

SKETCH OF REFERENCE TIES



Statement of evidence relative to this corner location is on back of page.

I hereby certify that this document and the data contained herein was prepared by me or under my direct supervision.

Ernst J. Rub

 Signature

 12-21-2010

 Date

Registration No. 9808

- Land Surveyor, Professional Engineer
 County Surveyor, County Engineer

OFFICE OF THE COUNTY RECORDER

County of _____

I hereby certify that this document was filed in the County Recorder's office at _____ M. on the _____ day of _____ A.D., 20____

County Recorder _____

BY _____ Deputy

DOCUMENT NO. _____

E1/4 CORNER, SEC. 30, T39, R25

STATEMENT OF EVIDENCE (FROM CERT NO. 809)

ALL OF THE ORIGINAL BEARING TREES ARE NOW GONE.

IN 1904, THE FORMER COUNTY SURVEYOR, JOHN NELSON, MADE A TOWNSHIP ROAD SURVEY ACROSS THE EAST-WEST OF SECS. 28 AND 29 AND TERMINATED AT THIS CORNER. HIS RECORDS SHOW A SANDSTONE SET AT THIS CORNER.

THIS CORNER PRESENTLY FALLS IN THE INTERSECTION OF ROADS EAST-WEST AND SOUTH.

IN OCT. OF 1989 M.B. RUDE MADE A SURVEY IN SEC. 29 TO LOCATE THE LINES OF OCCUPATION AND SEARCH AREAS.

ON OCT. 24, 1989, M.B. RUDE MADE A 15' X 15' X 3' DEEP EXCAVATION WITH THE COUNTY BACKHOE TO SEARCH FOR NELSON'S SANDSTONE AND THE ORIGINAL CORNER STAKE. NO EVIDENCE OF THE CORNER LOCATION WAS FOUND IN THIS EXCAVATION.

THE RECORDS OF JOHN NELSON'S ROAD SURVEY SHOW A DISTANCE OF 5340.72 FEET ACROSS THE EAST-WEST QUARTER LINE OF SEC. 29 IN HIS 1905 SURVEY. M.B. RUDE'S MEASUREMENT FROM THE CENTERLINE INTERSECTION OF ROADS AT THE EAST QUARTER AND WEST QUARTER CORNER IS 5348.22 FEET.

THE CENTERLINE INTERSECTION OF ROADS WAS ACCEPTED AS THE BEST EVIDENCE OF THE ORIGINAL CORNER LOCATION AND IS IN AGREEMENT WITH THE RECORDS WHICH CALL FOR THE ROAD TO BE BUILT ON THE QUARTER LINE.

ON OCT. 26, 1989 M.B. RUDE SET A #7 REBAR WITH A CAP AT THIS POSITION.

ON NOV. 23, 2010 E.G. RUD AND SONS, INC. FOUND THIS MONUMENT AND KANABEC COUNTY COORDINATES WERE ESTABLISHED ON THIS POSITION.