

CERTIFICATE OF LOCATION OF GOVERNMENT CORNER

NORTHEAST Corner of Section 31, Township 39, Range 25, 4TH P.M.

STATE OF MINNESOTA, County of KANABEC

At the corner location shown on the sketch:
SET A 1/2" BY 28" IRON PIPE WITH ALUMINUM CAP

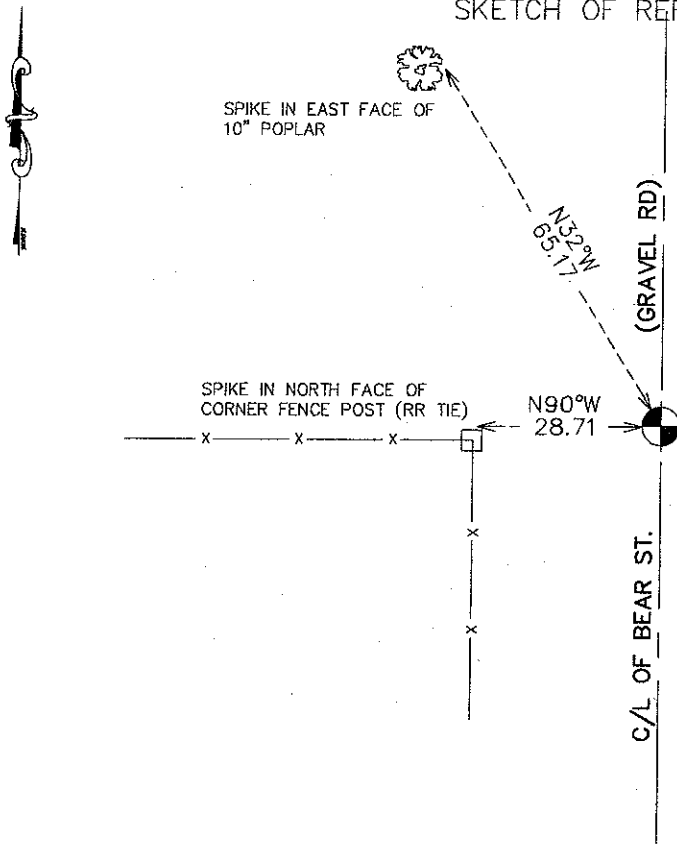
Kanabec County U.S. Survey Feet Coordinates
NAD 1983, HARN 1996 Adjustment
Obtained by RTK GPS Observation

Northing= ~~438865.76~~ **138863.24**
Easting= ~~748655.44~~ **348633.42**

*Revised
July 11, 2012
E. Rud*

Note: NAD 1983, HARN 1996 Adjustment
coordinates are NOT compatible with
NAD 1983 coordinates
Note: 1 Meter=3937/1200 U.S. Survey Feet

SKETCH OF REFERENCE TIES



Statement of evidence relative to this corner location is on back of page.

I hereby certify that this document and the data contained herein was prepared by me or under my direct supervision.

Ernest Rud
Signature

10-17-2011
Date

Registration No. 9808

- Land Surveyor, Professional Engineer
- County Surveyor, County Engineer

OFFICE OF THE COUNTY RECORDER

County of _____

I hereby certify that this document was filed in the County Recorder's office at _____ M. on the _____ day of _____ A.D., 20____

County Recorder _____

BY _____ Deputy

DOCUMENT NO. _____

NE CORNER, SEC. 31, T39, R25

STATEMENT OF EVIDENCE

THE ORIGINAL CORNER WAS SET BY DEPUTY SURVEYOR SILAS BARNARD ON JULY 6, 1855 AND 4 BEARING TREES AS NOTED:

- 8" MAPLE @ 30 LINKS BEARING N70°E**
- 10" WHITE OAK @ 16 LINKS BEARING WEST**
- 12" WHITE OAK @ 60 LINKS BEARING S25°W**
- 7" MAPLE @ 50 LINKS BEARING S40°E**

NO VISIBLE EVIDENCE REMAINS FOR THE QUARTER CORNER OR BEARING TREES.

THERE IS A ROAD OPENING FROM THE E 1/4 CORNER OF SEC. 31 TO THE NE CORNER OF SEC. 31 DATED MAY 13, 1905, BUT NO RECORD OF A SURVEY FILED WITH IT.

IN BOOK A OF SURVEYS, PAGES 292 AND 293, JOHN NELSON RECORDED A SURVEY OF SEC. 32 DATED APRIL 8-12, 1901. AT THAT TIME THE ORIGINAL CORNER WAS STILL IN PLACE AND JOHN TOOK NEW TIES:

- 24" PINE @ 52 LINKS BEARING N55°E**
- 30" PINE @ 10 LINKS BEARING S84°30'E**
- 18" OAK STUMP @ 84 LINKS BEARING S27°E**

NONE OF THESE BEARING TREES REMAIN TODAY.

ON JUNE 28, 1914 THE KANABEC COUNTY HIGHWAY DEPARTMENT MADE A SURVEY FROM THE SE CORNER OF SEC. 31 TO THE E 1/4 CORNER OF SEC. 30 FOR A ROAD ALIGNMENT AND PLUDED IN THE PROPERTY LINES. THE TOTAL DISTANCE MEASURED WAS 7972 FEET AND TODAY WE MEASURE IT TO BE 7968.24 FEET. THERE WERE WELL ESTABLISHED FENCE LINES AT THE E 1/4 CORNER OF SEC. 31 AND THE NE CORNER OF SEC. 31. THEY FIT THE DISTANCES RECORDED BY THE COUNTY HIGHWAY DEPARTMENT.

ON JULY 13, 2011 AN EXCAVATION WITH THE COUNTY BACKHOE WAS MADE AT THE CENTERLINE OF THE ROAD AND FENCE RUNNING WEST. NO EVIDENCE WAS FOUND IN THIS EXCAVATION WHICH WAS 20 FEET LONG, 10 FEET WIDE AND 1 FOOT INTO NATURAL GROUND. THE CENTERLINE OF THE ROAD AND THE FENCE LINE RUNNING WEST WAS CONSIDERED TO BE THE BEST EVIDENCE FOR THE PERPETUATION OF THIS CORNER.