

CERTIFICATE OF LOCATION OF GOVERNMENT CORNER

EAST QUARTER Corner of Section 31, Township 39, Range 25, 4TH P.M.

STATE OF MINNESOTA, County of KANABEC

At the corner location shown on the sketch:
SET A 1/2" BY 18" IRON PIPE WITH ALUMONUM CAP.

Kanabec County U.S. Survey Feet Coordinates
NAD 1983, HARN 1996 Adjustment
Obtained by RTK GPS Observation

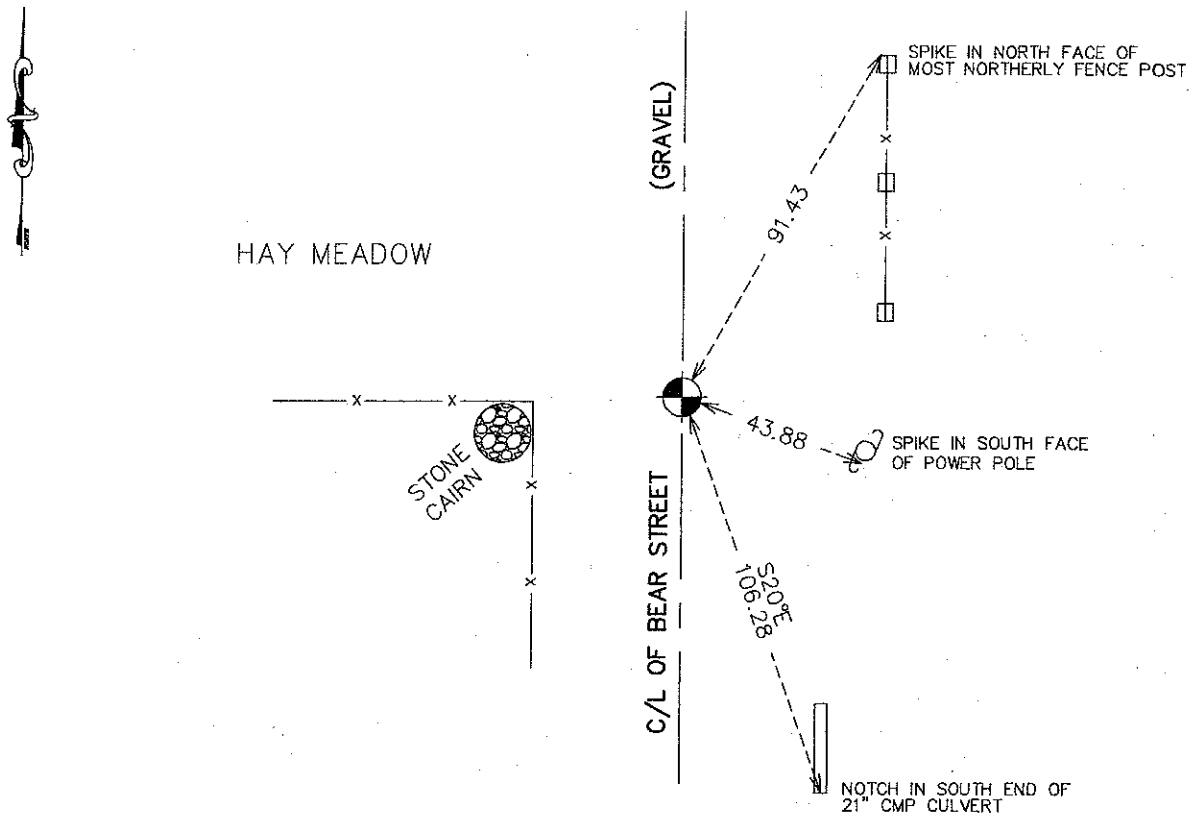
Northing= 136223.91

Easting= 348655.44

Note: NAD 1983, HARN 1996 Adjustment
coordinates are NOT compatible with
NAD 1983 coordinates

Note: 1 Meter=3937/1200 U.S. Survey Feet

SKETCH OF REFERENCE TIES



Statement of evidence relative to this corner location is on back of page.

I hereby certify that this document and the data contained herein was prepared by me or under my direct supervision.

Ernest J. Rud 10-17-2011
Signature Date

Registration No. 9808

Land Surveyor, Professional Engineer

County Surveyor, County Engineer

OFFICE OF THE COUNTY RECORDER

County of _____

I hereby certify that this document was filed in the County Recorder's office at _____ M. on the _____ day of _____ A.D., 20____

County Recorder _____

BY _____ Deputy

DOCUMENT NO. _____

E1/4 CORNER, SEC. 31, T39, R25

STATEMENT OF EVIDENCE

THE ORIGINAL GOVERNMENT POST WAS SET BY DEPUTY SURVEYOR SILAS BARNARD ON JULY 6, 1855 AND 2 BEARING TREES NOTED AS:

15" BLACK ASH @ 20 LINKS BEARING WEST

12" ASPEN @ 25 LINKS BEARING N52°E

NO VISIBLE EVIDENCE REMAINS FOR THE CORNER OR BEARING TREES TODAY.

THERE IS A ROAD OPENING ON FILE AT THE COUNTY AUDITOR'S OFFICE DATED MAY 24, 1902 FROM THE SE CORNER OF SEC. 31 TO THE E1/4 CORNER OF SEC. 31, BUT NO SURVEY WAS RECORDED WITH IT.

IN BOOK A OF SURVEYS, PAGES 292 AND 293 JOHN NELSON RECORDED A SURVEY OF SEC. 32 DATED APRIL 8-12, 1901. AT THAT TIME JOHN TOOK NEW TIES TO THE CORNER:

22" OAK STUMP @ 43 LINKS BEARING N51°E

26" PINE @ 135 LINKS BEARING S13°E

THESE BEARING TREES NO LONGER REMAIN.

ON JUNE 18, 1914 THE KANABEC COUNTY HIGHWAY DEPT. MADE A SURVEY FROM THE SE CORNER OF SEC. 31 TO THE E 1/4 CORNER OF SEC. 30 FOR A ROAD ALIGNMENT AND PLUDED IN THE PROPERTY LINE. THE TOTAL DISTANCE MEASURED WAS 7972 FEET AND TODAY WE MEASURE IT TO BE 7968.24 FEET. THERE WAS A WELL ESTABLISHED FENCE LINE AT THE E 1/4 CORNER OF SEC. 31 AND THE NE CORNER OF SEC. 31. THESE FIT THE DISTANCES MEASURED BY THE COUNTY HIGHWAY DEPT.

ON AUGUST 18, 2011 AN EXCAVATION WITH THE COUNTY BACKHOE WAS MADE AT THE CENTERLINE OF THE ROAD AND FENCE RUNNING WEST. NO EVIDENCE COULD BE FOUND IN THIS EXCAVATION WHICH WAS 30 FEET LONG AND 10 FEET WIDE AND 1 FOOT INTO NATURAL GROUND. THE CENTERLINE OF THE ROAD AND THE FENCE RUNNING WEST WAS CONSIDERED TO BE THE BEST EVIDENCE FOR THE PERPETUATION OF THIS CORNER. IT AGREES WITH COUNTY MEASUREMENTS OF 1914 AND THE EXISTING LINES OF OCCUPATION. A 1/2" IRON PIPE WITH AN ALUMINUM CAP WAS SET, TIES WERE TAKEN AND KANABEC COUNTY COORDINATES WERE ESTABLISHED ON THIS POSITION.