

# CERTIFICATE OF LOCATION OF GOVERNMENT CORNER

NORTHEAST Corner of Section 17, Township 39, Range 25, 4TH P.M.

STATE OF MINNESOTA, County of KANABEC

At the corner location shown on the sketch:

FOUND ALUMINUM MONUMENT

Kanabec County U.S. Survey Feet Coordinates  
NAD 1983, HARN 1996 Adjustment  
Obtained by RTK GPS Observation

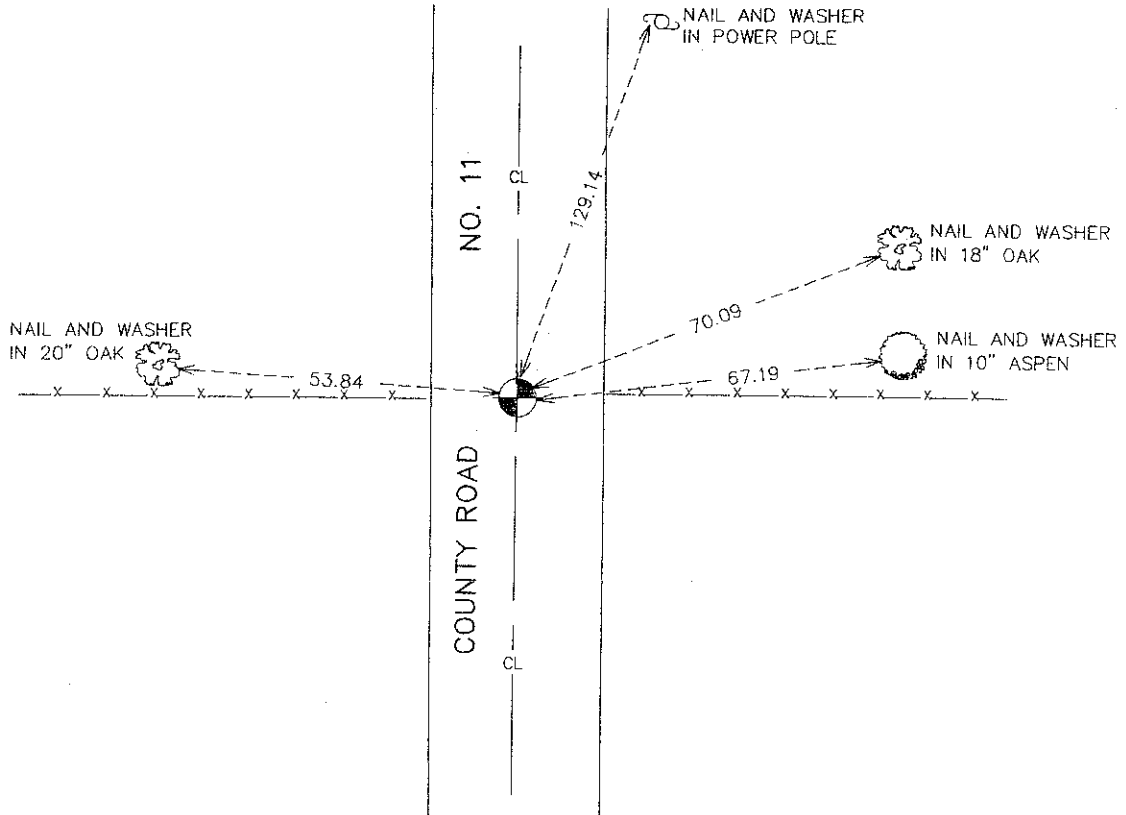
Northing= 154445.40

Easting= 353785.365

Note: NAD 1983, HARN 1996 Adjustment coordinates are NOT compatible with NAD 1983 coordinates

Note: 1 Meter=3937/1200 U.S. Survey Feet

## SKETCH OF REFERENCE TIES



Statement of evidence relative to this corner location is on back of page.

I hereby certify that this document and the data contained herein was prepared by me or under my direct supervision.

*Ernest J. Reid*  
Signature

10-1-2008  
Date

Registration No. Minn No 9808

Land Surveyor,  Professional Engineer

County Surveyor,  County Engineer

## OFFICE OF THE COUNTY RECORDER

County of \_\_\_\_\_

I hereby certify that this document was filed in the County Recorder's office at \_\_\_\_\_ M. on the \_\_\_\_\_ day of \_\_\_\_\_ A.D., 20 \_\_\_\_\_

County Recorder \_\_\_\_\_

BY \_\_\_\_\_ Deputy

DOCUMENT NO. \_\_\_\_\_

NORTHEAST CORNER SECTION 17, TOWNSHIP 39, RANGE 25

**STATEMENT OF EVIDENCE**

THE ORIGINAL CORNER WAS SET BY D.S. SILAS BARNARD ON JULY 5, 1855 AND 4 BEARING TREES ESTABLISHED. NO VISIBLE EVIDENCE FOR THE CORNER OR BEARING TREES COULD BE FOUND.

IN AUGUST 1979 JEFF CAINE DID A SURVEY IN SECTIONS 8 AND 9 AND FOUND A WOOD STUB DOWN 3 FEET WITH A NAIL AT THE INTERSECTION OF THE CENTERLINE OF A NORTH-SOUTH ROAD AND A FENCE LINE RUNNING EAST AND WEST. NO OTHER EVIDENCE COULD BE FOUND IN THE EXCAVATION WHICH WAS 8 FEET DEEP AND 10 FEET WIDE AND 20 FEET LONG. JEFF SET A MONUMENT AT THIS LOCATION AND TOOK TIES.

IN JUNE 2007 E.G. RUD & SONS, INC. FOUND THIS MONUMENT AND KANABEC COUNTY COORDINATES WERE ESTABLISHED ON THIS POSITION USING GLOBAL POSITIONING SYSTEM (G.P.S.) EQUIPMENT.