

# CERTIFICATE OF LOCATION OF GOVERNMENT CORNER

North Quarter Corner of Section 21, Township 39 North, Range 25 West,  
4th Principal Meridian, Kanabec County, State of Minnesota

At the corner location shown on the sketch:  
On 9/14/2016 set a 7/8" x 36" Rebar Monument with Aluminum Cap.

Kanabec County U.S. Survey Feet Coordinates  
NAD 1983, HARN 1996 Adjustment  
Obtained by RTK GPS observation  
Northing: 148968.3316  
Easting: 356534.8273

Note: NAD 1983, HARN 1996 Adjustment coordinates are NOT compatible with NAD 1983 coordinates  
Note: 1 Meter = 3937/1200 U.S. Survey Feet

## SKETCH OF REFERENCE TIES

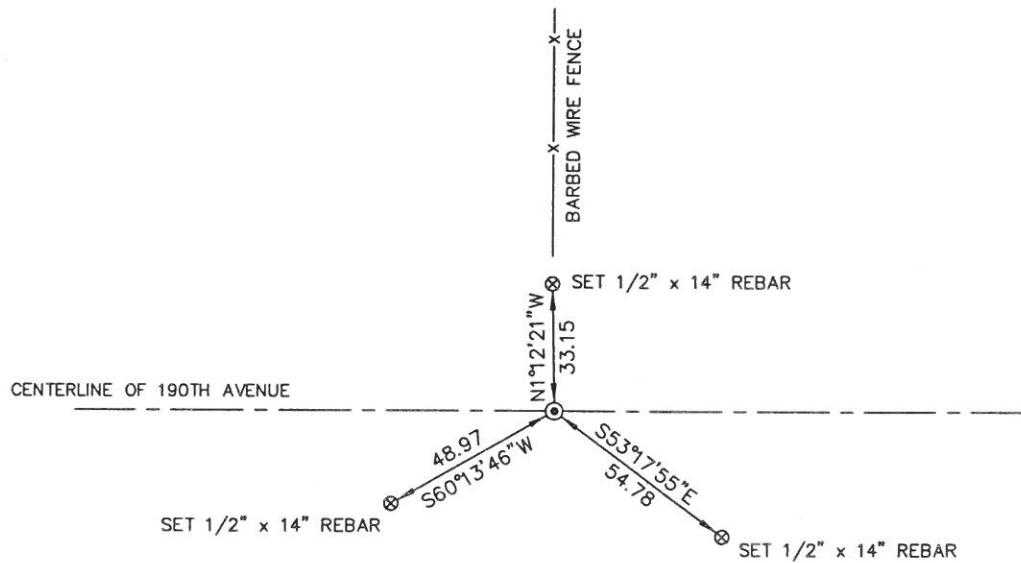
KROSCHEL LAND SURVEYORS, INC.  
ASSUMES NO LIABILITY FOR THE ACCURACY OF THE GPS COORDINATES SHOWN HEREON.  
ALL COORDINATES AND DIMENSIONS SHOULD BE FIELD VERIFIED BY THE USER.

NOT TO SCALE

THE BASIS OF BEARINGS FOR THIS DRAWING IS THE KANABEC COUNTY COORDINATE SYSTEM BY MNDOT, NAD 1983, HARN 1996 ADJUSTMENT



### SECTION 16



**Kroschel Land Surveyors, Inc.**

1639 Main Street North, Suite 6, Pine City, MN 55063  
Phone: 320-629-3267 Fax: 320-629-0176

Statement of evidence relative to this corner location is on back of page.

I hereby certify that this survey, plan, or report was prepared by me or under my direct supervision, that the United States public land survey monument record is correct and complete to the best of my knowledge and belief, and that I am a duly Licensed Land Surveyor under the laws of the State of Minnesota.

\_\_\_\_\_  
 Tyler J. Kroschel  
 License No. 44490  
 Land Surveyor      County Surveyor

**OFFICE OF THE COUNTY RECORDER**  
County of Kanabec

I hereby certify that this document was filed in the County Recorder's office at \_\_\_\_\_ .M. on the \_\_\_\_\_ day of \_\_\_\_\_ A.D., 20\_\_\_\_  
County Recorder \_\_\_\_\_  
By \_\_\_\_\_, Deputy  
DOCUMENT NO. \_\_\_\_\_

Statement of Evidence:

In June of 1855, Deputy Surveyor Silas Bernard set a post to mark the North Quarter Corner of Section 21, Township 39 North, Range 25 West, 4th Principal Meridian.

Reference ties were taken to:

- 16 inch Pine at South 45 degrees East a distance of 40 links
- 9 inch Sugar at North 51 degrees East a distance of 5 links

All of the original Government corner evidence was searched for. None was found.

1901—County Surveyor John Nelson measured 80.30 chains across the south line of Section 16, per the records of the Kanabec County Highway Department. He set a post with a tie to a Pine Stump to the Northwest.

1932—Surveyor Chas Handschu made a survey around Section 16, per the records of the Kanabec County Highway Department. He measured 2652.0 feet to the Southwest corner and 2652.0 to the Southeast corner of Section 16. He shows a Post being 33 feet north of the South Quarter corner, but no monument at the South Quarter corner.

1936±—The Kanabec County Highway Department measured 2653.2 feet to the Southwest corner and 2649.5 feet to the Southeast corner of Section 16.

1936—Corner Tie Sheet #145 was filed for the South Quarter corner of Section 16 showing an iron pin 6" below the surface and ties to 3 fence posts. There is no name on this record.

In September 2016, I made a survey around Section 16, Township 39 North, Range 25 West, 4th Principal Meridian for Jeff Wickham to locate existing monuments, lines of occupation and establish search areas.

On 9/14/2016 we made a 8' x 8' x 3' deep excavation at the intersection of the centerline of the County Road and a fence line north. No evidence of the corner was found in the excavation.

I set a 7/8" x 36" Rebar Monument with Aluminum Cap using obliterated methods, 33.1 feet south of the one remaining fence post from the 1936 Tie Sheet and on the extension of the North Quarter corner of Section 16 through said fence post. This location fit Handschu's distances to the east and west within 1 foot and angle within 04 seconds. Established reference ties and assigned Kanabec County Coordinates.

This location was determined to be the best available evidence of the original corner location.



**Kroschel Land Surveyors, Inc.**

1639 Main Street North, Suite 6, Pine City, MN 55063  
Phone: 320-629-3267 Fax: 320-629-0176