

# CERTIFICATE OF LOCATION OF GOVERNMENT CORNER

NORTHEAST Corner of Section 20, Township 39, Range 25, 4TH P.M.  
 STATE OF MINNESOTA, County of KANABEC

At the corner location shown on the sketch:

SET #7 REBAR WITH ALUMINUM CAP  
 AND ESTABLISHED KANABEC COUNTY COORDINATES ON ITS LOCATION.

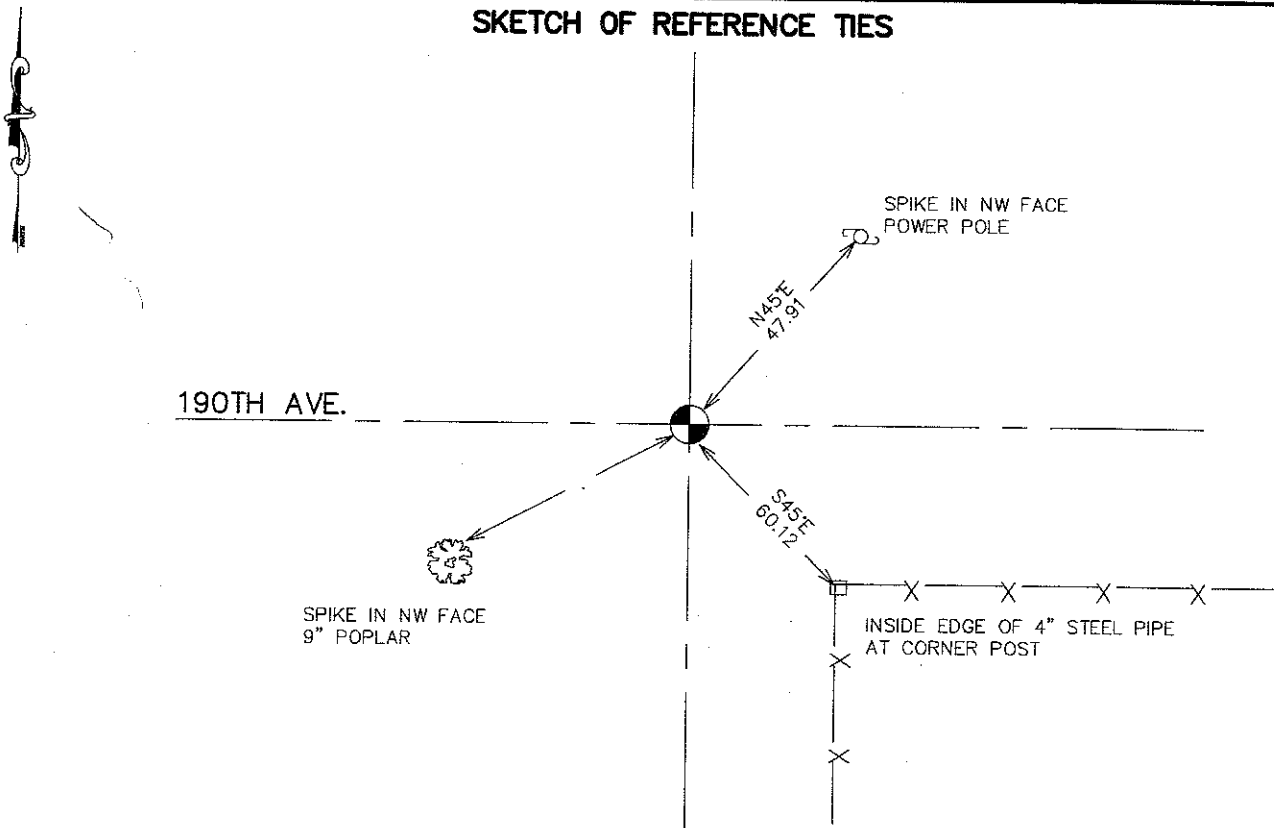
Kanabec County U.S. Survey Feet Coordinates  
 NAD 1983, HARN 1996 Adjustment  
 Obtained by RTK GPS Observation

Northing= 149162.64  
 Easting= 353889.43

Note: NAD 1983, HARN 1996 Adjustment  
 coordinates are NOT compatible with  
 NAD 1983 coordinates

Note: 1 Meter=3937/1200 U.S. Survey Feet

## SKETCH OF REFERENCE TIES



Statement of evidence relative to this corner location is on back of page.

I hereby certify that this document and the data  
 contained herein was prepared by me or under  
 my direct supervision.

*Ernest J. Rud*  
 Signature

12-10-2007  
 Date

Registration No. 9808

Land Surveyor,  Professional Engineer  
 County Surveyor,  County Engineer

## OFFICE OF THE COUNTY RECORDER

County of \_\_\_\_\_

I hereby certify that this document was filed in  
 the County Recorder's office at \_\_\_\_\_ M. on the  
 \_\_\_\_\_ day of \_\_\_\_\_ A.D., 20\_\_\_\_

County Recorder \_\_\_\_\_

BY \_\_\_\_\_ Deputy

DOCUMENT NO. \_\_\_\_\_

## NORTHEAST CORNER SECTION 20, T39, R25

### STATEMENT OF EVIDENCE

THE ORIGINAL CORNER WAS SET BY DEPUTY SURVEYOR SILAS BARNARD IN JULY 1855 AND FOUR BEARING TREES ESTABLISHED - NO VISIBLE EVIDENCE REMAINS FOR THE CORNER OR BEARING TREE.

THERE IS A ROAD OPENING DATED AUGUST 15, 1914 BETWEEN SECTIONS 16 AND 17 AND BETWEEN SECTIONS 20 AND 21.

IN BOOK A1 OF SURVEYS PAGES 16 AND 17 A SURVEY BY JOHN NELSON DATED SEPTEMBER 5TH 1910 IS RECORDED WHERE JOHN NELSON RAN A SURVEY FROM THE SOUTHEAST CORNER OF SECTION 20 TO THE NORTHEAST CORNER OF SECTION 17. IN THIS SURVEY JOHN STATED HE SET A SANDSTONE FOR THIS CORNER.

ON PAGE 146 OF SECTION CORNER TIES A CERTIFICATE OF LOCATION IS FILED DATED FEBRUARY 12, 1936 BUT IS NOT SIGNED SO ORIGIN OF CERTIFICATE IS NOT KNOWN. THIS CERTIFICATE STATES THAT A SANDSTONE WAS FOUND 2 INCHES BELOW THE SURFACE AND 4 REFERENCE TIES WERE TAKEN. NONE OF THESE TIES NOW REMAIN.

ON AUGUST 22, 2007 E.G. RUD AND SONS MADE AN EXCAVATION WITH THE COUNTY BACKHOE AT THE INTERSECTION OF A NORTH-SOUTH GRAVEL ROAD AND AN EAST WEST GRAVEL ROAD. AT 4 FEET BELOW THE SURFACE AN 8" X 12" SANDSTONE WITH A CHISELED X WAS FOUND. THIS STONE WAS BELIEVED TO BE THE STONE SET BY JOHN NELSON IN 1910 AND THE BEST EVIDENCE FOR THE PERPETUATED LOCATION OF THE CORNER.

A #7 REBAR WITH AN ALUMINUM CAP WAS SET, TIES TAKEN AND KANABEC COUNTY COORDINATES ESTABLISHED USING G.P.S. EQUIPMENT.