

# CERTIFICATE OF LOCATION OF GOVERNMENT CORNER

NORTH QUARTER Corner of Section 28, Township 39, Range 25, 4TH P.M.

STATE OF MINNESOTA, County of KANABEC

At the corner location shown on the sketch:  
SET A 1/2" IRON PIPE WITH 3-1/2" ALUMONUM CAP.

Kanabec County U.S. Survey Feet Coordinates  
NAD 1983, HARN 1996 Adjustment  
Obtained by RTK GPS Observation

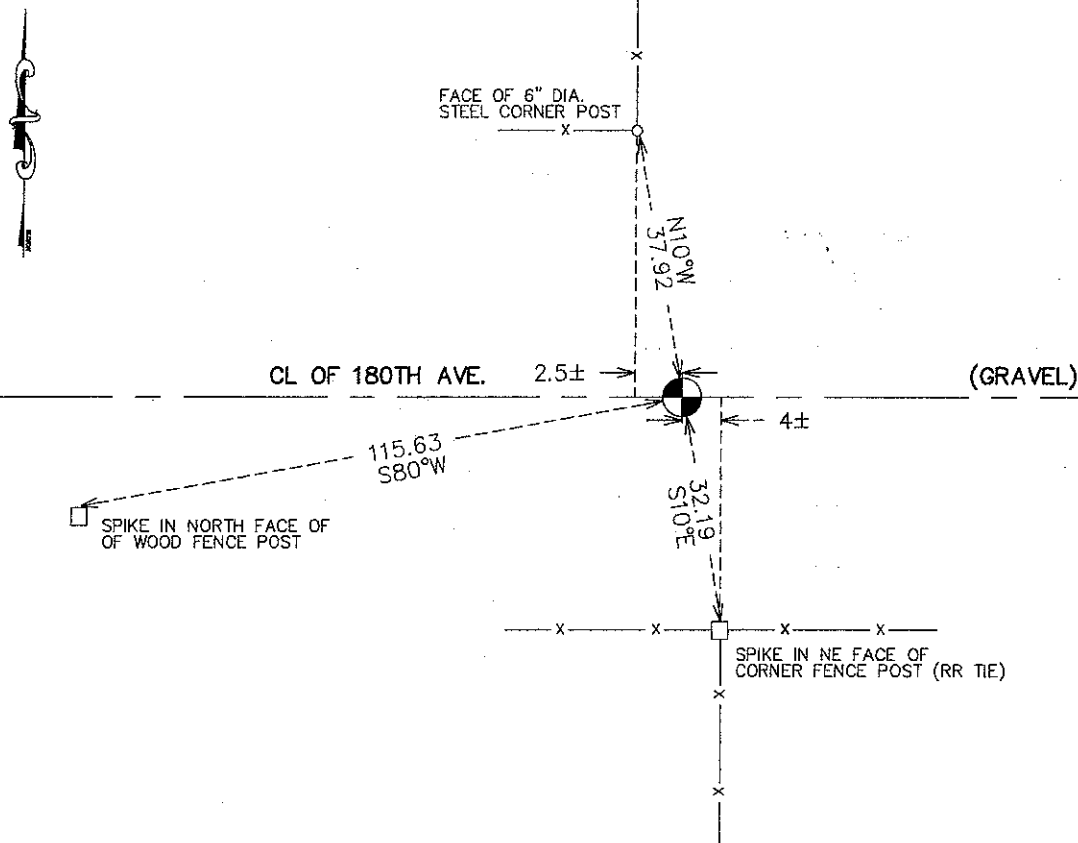
Northing= 143742.48

Easting= 356576.80

Note: NAD 1983, HARN 1996 Adjustment  
coordinates are NOT compatible with  
NAD 1983 coordinates

Note: 1 Meter=3937/1200 U.S. Survey Feet

### SKETCH OF REFERENCE TIES



Statement of evidence relative to this corner location is on back of page.

I hereby certify that this document and the data contained herein was prepared by me or under my direct supervision.

*Ernest L. Rud* 10-1  
Signature Date

Registration No. 9808

Land Surveyor,  Professional Engineer

County Surveyor,  County Engineer

### OFFICE OF THE COUNTY RECORDER

County of \_\_\_\_\_

I hereby certify that this document was filed in the County Recorder's office at \_\_\_\_\_ M. on the

\_\_\_\_\_ day of \_\_\_\_\_ A.D., 20\_\_\_\_

County Recorder \_\_\_\_\_

BY \_\_\_\_\_ Deputy

DOCUMENT NO. \_\_\_\_\_

N1/4 CORNER, SEC. 28, T39, R25

**STATEMENT OF EVIDENCE**

**THE ORIGINAL GOVERNMENT POST WAS SET BY DEPUTY SURVEYOR SILAS BARNARD ON JULY 3, 1855 AND 2 BEARING TREES NOTED AS:**

**10" YELLOW BIRCH @ 10 LINKS BEARING SOUTH  
12" PINE @ 25 LINKS BEARING N49°W**

**NO VISIBLE EVIDENCE REMAINS FOR THE CORNER OR BEARING TREES TODAY.**

**NO RECORDS OF ANY SUBSEQUENT SURVEYS COULD BE FOUND AT THE KANABEC COUNTY OFFICES.**

**THERE IS A ROAD OPENING ALONG THE NORTH LINE OF SEC. 28 DATED JUNE 28, 1917 ON FILE AT THE KANABEC COUNTY AUDITOR'S OFFICE. NO SURVEY FOR THE ROAD WAS MADE AT THAT TIME.**

*was made*  
**ON AUGUST 18, 2011 AN EXCAVATION WITH THE COUNTY BACKHOE. THE EXCAVATION WAS 24 FEET EAST-WEST AND 8 FEET NORTH-SOUTH. ENCOUNTERED 16" OF CLASS 5, THEN 6" OF DARK CLAY, THEN 3" OF TOP SOIL, THEN GRAY CLAY. A POINTED SANDSTONE WAS FOUND AT THE INTERSECTION OF THE CENTERLINE OF THE ROAD AND FENCES RUNNING NORTH AND SOUTH. THIS STONE WAS AT THE TOP SOIL LINE BUT NO MARKINGS COULD BE FOUND. NO OTHER EVIDENCE WAS FOUND. THE INTERSECTION OF THE CENTERLINE OF THE ROAD WITH THE FENCES RUNNING NORTH AND SOUTH WAS THE BEST EVIDENCE FOR THE PERPETUATION OF THIS CORNER. A 1/2" IRON PIPE WITH AN ALUMINUM CAP WAS SET, TIES WERE TAKEN AND KANABEC COUNTY COORDINATES WERE ESTABLISHED ON THIS POSITION.**