

CERTIFICATE OF LOCATION OF GOVERNMENT CORNER

NORTHQUARTER Corner of Section 33, Township 39, Range 25, 4TH P.M.

STATE OF MINNESOTA, County of KANABEC

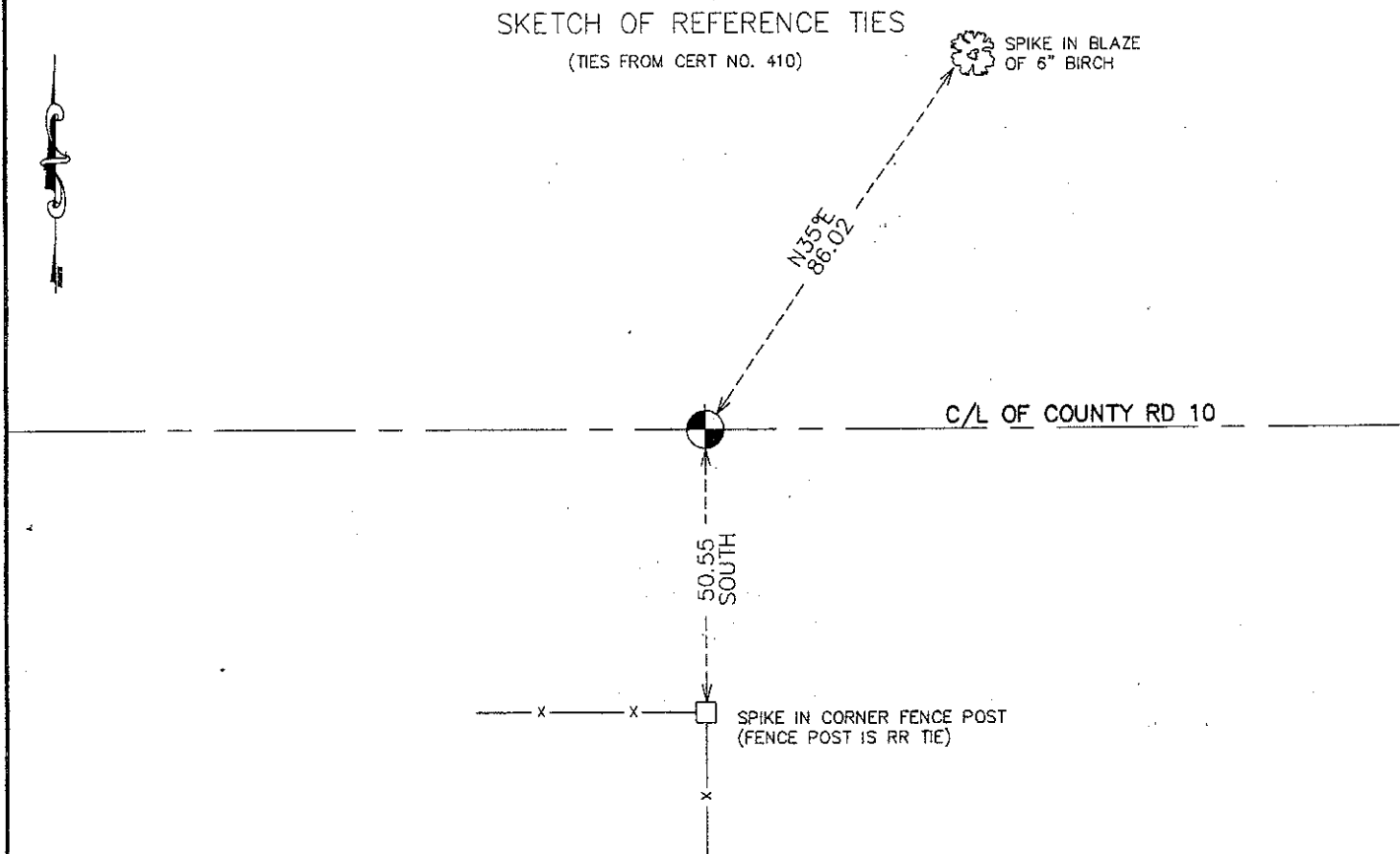
At the corner location shown on the sketch:
 FOUND CAST IRON MONUMENT SET BY M.B. RUDE ON
 10/29/1975 PER CERT NO. 410.

Kanabec County U.S. Survey Feet Coordinates
 NAD 1983, HARN 1996 Adjustment
 Obtained by RTK GPS Observation

Northing= 138382.78
 Easting= 356607.22

Note: NAD 1983, HARN 1996 Adjustment
 coordinates are NOT compatible with
 NAD 1983 coordinates
 Note: 1 Meter=3937/1200 U.S. Survey Feet

SKETCH OF REFERENCE TIES (TIES FROM CERT NO. 410)



Statement of evidence relative to this corner location is on back of page.

I hereby certify that this document and the data contained herein was prepared by me or under my direct supervision.

Ernest J. Rude
 Signature

12-21-2010
 Date

Registration No. 9808

- Land Surveyor, Professional Engineer
 County Surveyor, County Engineer

OFFICE OF THE COUNTY RECORDER

County of _____

I hereby certify that this document was filed in the County Recorder's office at _____ M. on the _____ day of _____ A.D., 20____

County Recorder _____
 BY _____ Deputy

DOCUMENT NO. _____

N1/4 CORNER, SEC. 33, T39, R25

STATEMENT OF EVIDENCE

THE ORIGINAL CORNER POST WAS SET BY U.S. DEPUTY SURVEYOR SILAS BARNARD ON JULY 3, 1855 AND 2 BEARING TREES ESTABLISHED AS FOLLOWS:

12" BASSWOOD BEARING S48°E @ 15 LINKS

10" BASSWOOD BEARING N40°E @ 50 LINKS

NONE OF THE ORIGINAL BEATING TREES REMAIN TODAY.

IN BOOK A OF SURVEYS ON PAGE 291 A SURVEY OF SEC. 33 BY JOHN NELSON WAS RECORDED ON APRIL 2, 1901. JOHN NELSON DID NOT FIND THE ORIGINAL CORNER AT THAT TIME SO HE SET A POST AND NOTED 2 NEW BEARING TREES AS:

26" PINE STUMP BEARING N60°15'E @ 1.11 CHAINS

30" PINE STUMP BEARING S22°45'W @ 1.83 CHAINS

NONE OF THESE BEARING TREES REMAIN TODAY.

JOHN NELSON MEASURED THE NORTH LINE OF SEC. 33 TO BE 80.52 CHAINS OR 5314.32 FEET AND SET THE N1/4 CORNER POST MIDWAY.

AN EXCAVATION 9' X 14' WITH THE COUNTY BACKHOE WAS MADE IN 1975. 10 STONES WERE FOUND BUT NONE WITH MARKINGS. ALSO, PART OF AN OLD POST WAS FOUND THAT COULD HAVE BEEN PART OF THE POST SET BY NELSON OR THE ORIGINAL POST. THE TOTAL DISTANCE MEASURED ALONG THE NORTH LINE OF SEC. 33 WAS 5347.80 FEET. M.B. RUDE SET AN CAST IRON MONUMENT ON OCT. 29, 1975 WHICH FIT FENCE LINES NORTH AND SOUTH AND VERY CLOSE TO A PIN SET BY COUNTY CREWS.

ON NOV. 23, 2010 E.G. RUD AND SONS, INC. ESTABLISHED KANABEC COUNTY COORDINATES ON THIS POSITION.