

CERTIFICATE OF LOCATION OF GOVERNMENT CORNER

NORTHEAST Corner of Section 32, Township 39, Range 25, 4TH P.M.

STATE OF MINNESOTA, County of KANABEC

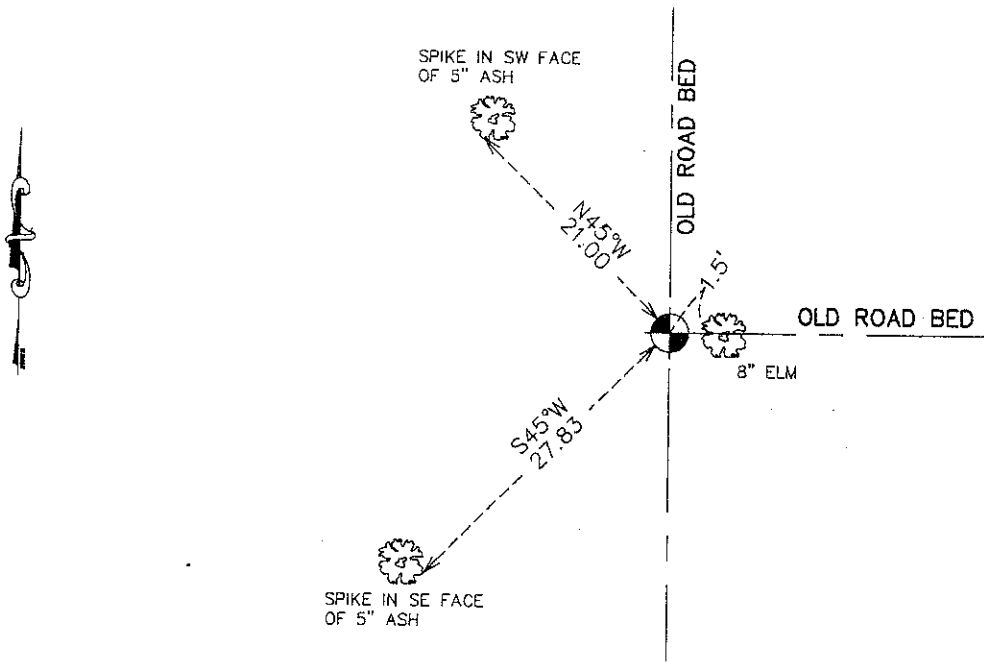
At the corner location shown on the sketch:
 FOUND CAST ALUMINIM MONUMENT WITH MAGNETS PER
 CERTIFICATE NO. 412

Kanabec County U.S. Survey Feet Coordinates
 NAD 1983, HARN 1996 Adjustment
 Obtained by RTK GPS Observation

Northing= 138588.08
 Easting= 353950.97

Note: NAD 1983, HARN 1996 Adjustment
 coordinates are NOT compatible with
 NAD 1983 coordinates
 Note: 1 Meter=3937/1200 U.S. Survey Feet

SKETCH OF REFERENCE TIES



Statement of evidence relative to this corner location is on back of page.

I hereby certify that this document and the data contained herein was prepared by me or under my direct supervision.

Ernest J. Rind 12-21-2010
 Signature Date

Registration No. 9808

Land Surveyor, Professional Engineer
 County Surveyor, County Engineer

OFFICE OF THE COUNTY RECORDER

County of _____

I hereby certify that this document was filed in the County Recorder's office at _____ M. on the _____ day of _____ A.D., 20____

County Recorder _____

BY _____ Deputy

DOCUMENT NO. _____

NE CORNER, SEC. 32, T39, R25

STATEMENT OF EVIDENCE

THE ORIGINAL CORNER POST WAS SET BY DEPUTY SURVEYOR SILAS BARNARD ON JULY 3, 1855 AND 4 BEARING TREES ESTABLISHED AS FOLLOWS:

**12" BLACK ASH BEARING N60°E @ 15 LINKS
8" BLACK ASH BEARING S15°E @ 8 LINKS
8" BLACK ASH BEARING N15°W @ 22 LINKS
16" PINE BEARING S54°W @ 28 LINKS**

NO VISIBLE EVIDENCE REMAINS TODAY FOR THE CORNER OR BEARING TREES.

THERE IS A ROAD OPENING ON FILE AT THE KANABEC COUNTY AUDITOR'S OFFICE ALONG THE EAST LINE OF SEC. 32 DATED JUNE 15, 1898 AND ALONG THE NORTH LINE OF SEC. 32 DATED MAY 13, 1901, BUT NO SURVEYS WERE MADE IN CONJUNCTION WITH THESE ROAD OPENINGS.

IN BOOK A OF SURVEYS, PAGES 292 & 293 AT THE KANABEC COUNTY OFFICES THERE IS A SURVEY RECORDED BY JOHN NELSON ON DATED APRIL 8-12, 1901 FOR SEC. 32. AT THAT TIME JOHN FOUND THE ORIGINAL POST FOR THE NE CORNER OF SEC. 32 BUT DID NOT RECORD NEW TIES.

ON NOV. 3, 1975 M.B. RUDE FOUND A WOOD POST IN THE CENTERLINE OF AN OLD ROAD BED DOWN 3 FEET. M.B. RUDE SET A CAST ALUMINUM MONUMENT WITH MAGNETS AND TOOK NEW TIES.

ON NOV. 23, 2010 E.G. RUD AND SONS, INC. FOUND THIS CAST ALUMINUM MONUMENT AND KANABEC COUNTY COORDINATES WERE ESTABLISHED ON THIS POSITION.