

CERTIFICATE OF LOCATION OF GOVERNMENT CORNER

E 1/4 Corner of Section 32, Township 39, Range 25, 4th P.M.

STATE OF MINNESOTA, County of KANABEC

At the corner location shown on the sketch:

Set a # 7 copped rebar

Kanabec County U.S. Survey Feet Coordinates
NAD 1983, HARN 1996 Adjustment
Obtained by RTK GPS Observation

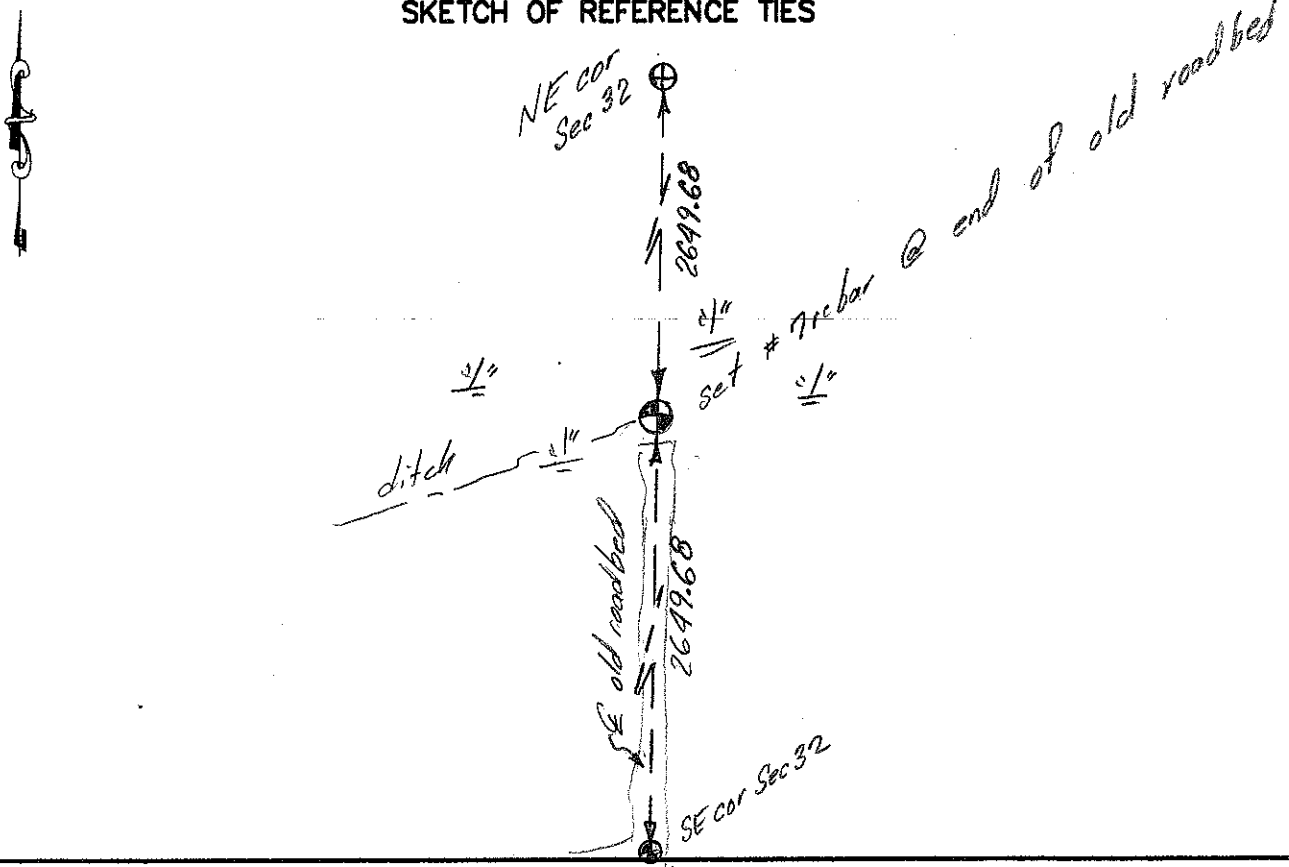
Northing= 135939.13

Easting= 354012.97

Note: NAD 1983, HARN 1996 Adjustment coordinates are NOT compatible with NAD 1983 coordinates

Note: 1 Meter=3937/1200 U.S. Survey Feet

SKETCH OF REFERENCE TIES



Statement of evidence relative to this corner location is on back of page.

I hereby certify that this document and the data contained herein was prepared by me or under my direct supervision.

Ernest L. Rud 7-11-2012
Signature Date

Registration No. Minn No. 9808

- Land Surveyor, Professional Engineer
- County Surveyor, County Engineer

OFFICE OF THE COUNTY RECORDER

County of _____

I hereby certify that this document was filed in the County Recorder's office at _____ M. on the _____ day of _____ A.D., 20____

County Recorder _____

BY _____ Deputy

DOCUMENT NO. _____

STATEMENT OF EVIDNECE: EAST QUARTER CORNER 32-39-25 3925097

The original corner was set by Deputy Surveyor Silas Barnard on July 3, 1855 and two bearing trees noted:

8" tamarack bearing East at 5 links
10" tamarack

No evidence for the corner or accessories remains today.

On April 8, 1901, John Nelson recorded a survey of Section 32 on Pages 292 and 293 of Surveys. A post was set at this corner and two reference ties noted as:

6" tamarack bearing North 70 degrees West at 20 links
8" tamarack bearing South 77 degrees East at 43 links

No visible evidence for the corner or ties remains. John Nelson measured 80 chains or 5280 feet for the east line.

In October 2011, E. G. Rud & Sons ran a survey along this line and measured 5299.36 feet from the Northeast corner to the Southeast corner. A #7 rebar with an aluminum cap was set on line and midway between the Northeast and Southeast corners. This fell on the north end of an old roadbed in a swamp. Kanabec County coordinates were established on this position.
