

CERTIFICATE OF LOCATION OF GOVERNMENT CORNER

3925096

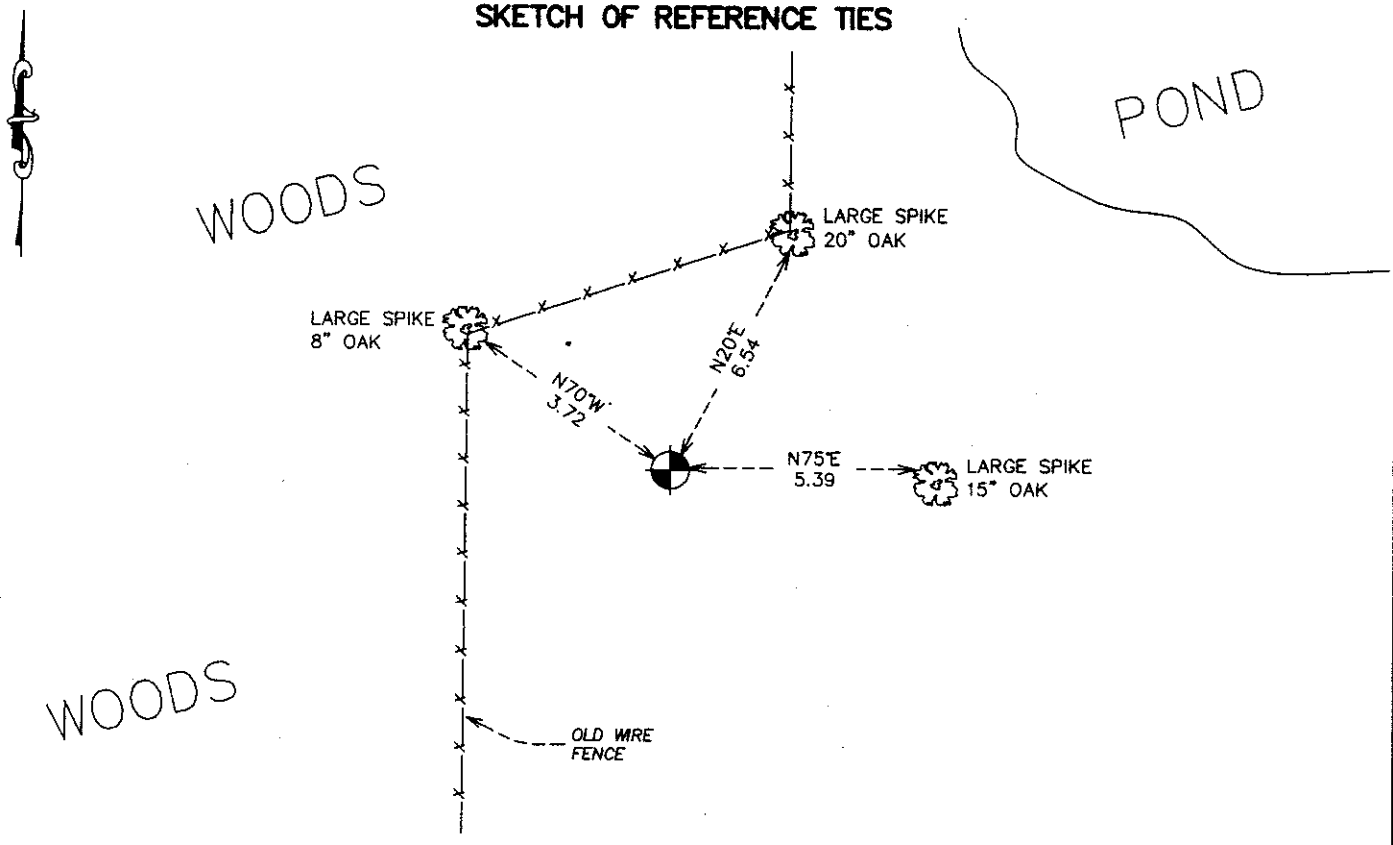
WEST QUARTER Corner of Section 3, Township 39, Range 25, 4TH P.M.

STATE OF MINNESOTA, County of KANABEC

At the corner location shown on the sketch:
SET A 7/8 INCH REBAR AND ALUMINUM MONUMENT

Kanabec County U.S. Survey Feet Coordinates
 NAD 1983, HARN 1996 Adjustment
 Obtained by RTK GPS Observation
 Northing= 162101.399
 Easting= 359016.210
 Note: NAD 1983, HARN 1996 Adjustment coordinates are NOT compatible with NAD 1983 coordinates
 Note: 1 Meter=3937/1200 U.S. Survey Feet

SKETCH OF REFERENCE TIES



Statement of evidence relative to this corner location is on back of page.

I hereby certify that this document and the data contained herein was prepared by me or under my direct supervision.

Ernest J. Reed 3-31-2008
 Signature Date

Registration No. 9808

Land Surveyor, Professional Engineer
 County Surveyor, County Engineer

OFFICE OF THE COUNTY RECORDER

County of _____

I hereby certify that this document was filed in the County Recorder's office at _____ M. on the _____ day of _____ A.D., 20__

County Recorder _____

BY _____ Deputy

DOCUMENT NO. _____

WEST QUARTER CORNER SECTION 3, TOWNSHIP 39, RANGE 25

STATEMENT OF EVIDENCE

THE ORIGINAL POST WAS SET BY DEPUTY SURVEYOR SILAS BARNARD ON JUNE 28, 1855 AND TWO BEARING TREES WERE ESTABLISHED. NO VISIBLE EVIDENCE FOR THE CORNER OR BEARING TREES COULD BE FOUND. NO RECORDS OF ANY SUBSEQUENT SURVEYS COULD BE FOUND AT THE KANABEC COUNTY OFFICES.

IN NOVEMBER 2007, E.G. RUD AND SONS RAN A SURVEY AROUND SECTIONS 3 AND 4 TO LOCATE EXISTING MONUMENTATION AND LINES OF OCCUPATION. THIS CORNER FALLS ON A NORTH-SOUTH FENCE LINE WITH A FENCE LINE RUNNING WEST. NO FENCE CORNER WAS EVIDENT AND THE TERRAIN IS VERY HILLY AND THE EAST-WEST FENCE WAS NOT VERY STRAIGHT. GLORIA BLOWERS OWNER OF LAND IN NORTHWEST QUARTER OF SECTION 3 STATED THAT THE NORTH-SOUTH FENCE WAS USED FOR THE WEST PROPERTY LINE, BUT DID NOT KNOW WHERE THE SOUTH BOUNDARY WAS. DOUG WELINSKI OWNER OF LAND IN SOUTHWEST QUARTER OF SECTION 3 STATED THE SAME. THEREFORE WE SET THE CORNER ON THE NORTH-SOUTH FENCE LINE AND AT A PRORATED DISTANCE FROM THE SOUTHEAST CORNER TO THE NORTHEAST CORNER OF SECTION 4. WE DID LOCATE A CAPPED REBAR #17549 AND RECEIVED INFORMATION FROM BOGART PETERSON. THIS FELL 2 FEET WEST AND 16 FEET SOUTH OF OUR COMPUTED POSITION. AFTER REVIEWING INFORMATION RECEIVED IT WAS DETERMINED THAT THE COMPUTED POSITION USING THE NORTH-SOUTH FENCE WAS THE BEST EVIDENCE TO THE LOCATION FOR THIS CORNER. A #7 REBAR WITH AN ALUMINUM CAP WAS SET, TIES WERE TAKEN, AND KANABEC COUNTY COORDINATES WERE ESTABLISHED ON THIS POSITION USING GLOBAL POSITIONING SYSTEM (G.P.S.) EQUIPMENT.