

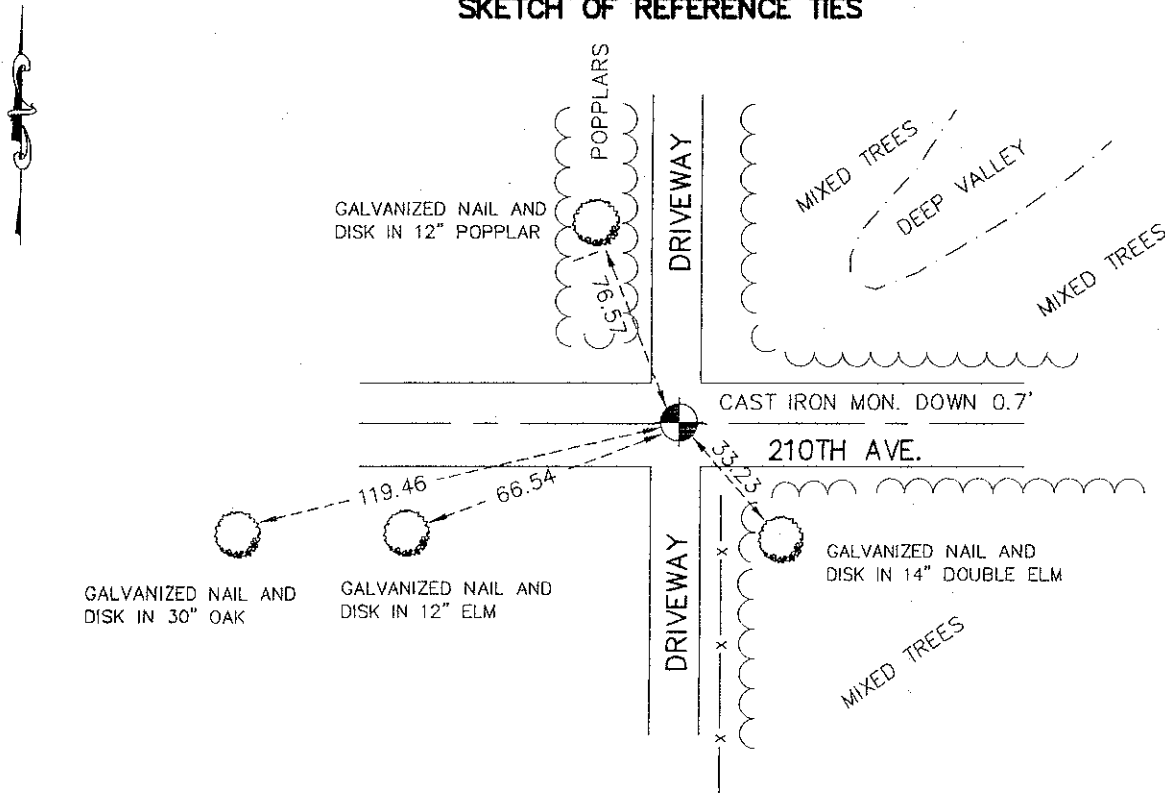
CERTIFICATE OF LOCATION OF GOVERNMENT CORNER

NORTH QUARTER Corner of Section 10, Township 39, Range 25 4TH P.M.
 STATE OF MINNESOTA, County of KANABEC

At the corner location shown on the sketch:
 STANDARD MN/DOT CAST IRON MONUMENT

Kanabec County U.S. Survey Feet Coordinates
 NAD 1983, HARN 1996 Adjustment
 Obtained by RTK GPS Observation
 Northing= 159316.00
 Easting= 361711.80
 Note: NAD 1983, HARN 1996 Adjustment
 coordinates are NOT compatible with
 NAD 1983 coordinates
 Note: 1 Meter=3937/1200 U.S. Survey Feet

SKETCH OF REFERENCE TIES



Statement of evidence relative to this corner location is on back of page.

I hereby certify that this document and the data contained herein was prepared by me or under my direct supervision.

Ernest J. Reed
 Signature

3-17-2009
 Date

Registration No. Miss No 9808

- Land Surveyor, Professional Engineer
 County Surveyor, County Engineer

OFFICE OF THE COUNTY RECORDER

County of _____

I hereby certify that this document was filed in the County Recorder's office at _____ M. on the _____ day of _____ A.D., 20 _____

County Recorder _____
 BY _____ Deputy

DOCUMENT NO. _____

NORTH QUARTER CORNER SECTION 10, TOWNSHIP 39, RANGE 25,
4TH PRINCIPAL MERIDIAN, KANABEC COUNTY, MN

STATEMENT OF EVIDENCE

THE ORIGINAL PUBLIC LAND SURVEY WAS RUN IN 1855 AND A WOOD POST WAS SET TO MARK THE CORNER.

NO OTHER PUBLIC RECORDS CONCERNING THIS CORNER WERE FOUND.

IN 1997 THE MINNESOTA DEPARTMENT OF TRANSPORTATION EXCAVATED AN AREA 7 FT. X 10 FT. TO A DEPTH OF FOUR FT., AT THE LOST LOCATION, NO EVIDENCE OF THE CORNER COULD BE FOUND. NO EVIDENCE OF THE ORIGINAL BEARING TREES OR REMAINS COULD BE FOUND. THE CORNER WAS SET BY SINGLE PROPORTION BETWEEN THE NE CORNER OF SECTION 10 AND THE NORTHWEST CORNER OF SECTION 10. THIS LOCATION IS APPROXIMATELY 2 FT. SOUTH OF THE CENTER OF THE EAST-WEST TOWNSHIP ROAD AND APPROXIMATELY CENTERED ON DRIVEWAYS NORTH AND SOUTH. ADJOINING PROPERTY OWNERS HAD NO KNOWLEDGE OF THE CORNER LOCATION.

FOR DETAILS AND SURVEY ANALYSIS CONTACT THE MINNESOTA DEPARTMENT OF TRANSPORTATION, SURVEYS OFFICE IN BAXTER.

IN JUNE 2007 E.G. RUD AND SONS ESTABLISHED KANABEC COUNTY COORDINATES ON THIS MONUMENT USING G.P.S. EQUIPMENT.