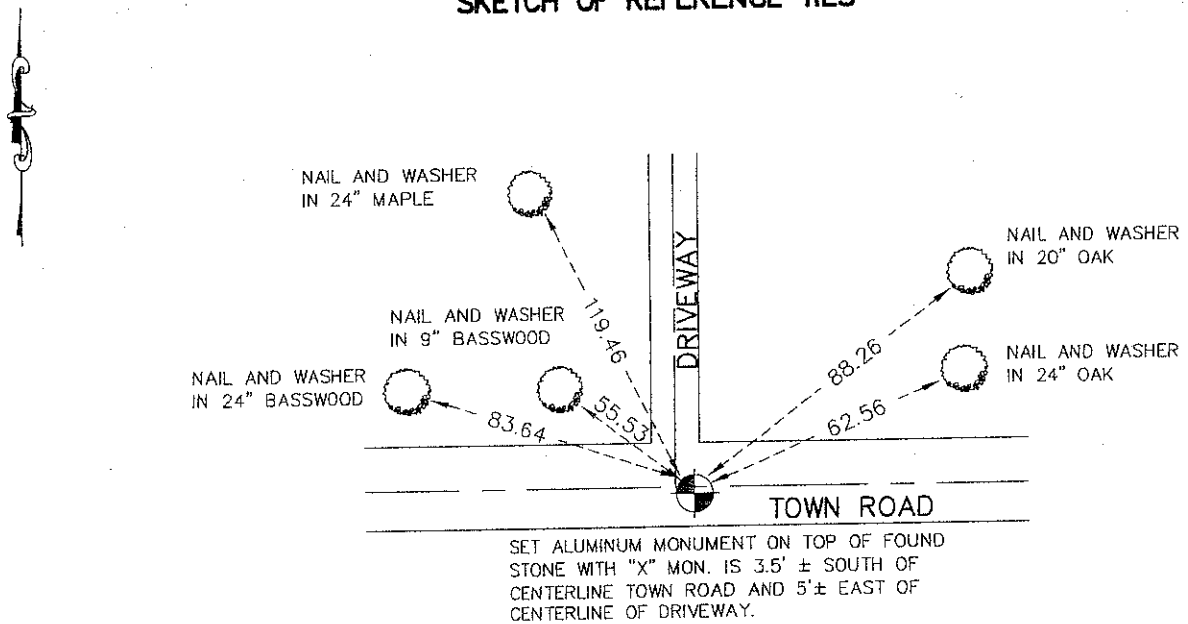


CERTIFICATE OF LOCATION OF GOVERNMENT CORNER

NORTHEAST Corner of Section 9, Township 39, Range 25 4TH P.M.
 STATE OF MINNESOTA, County of KANABEC

At the corner location shown on the sketch: ALUMINUM MONUMENT ON TOP OF STONE	Kanabec County U.S. Survey Feet Coordinates NAD 1983, HARN 1996 Adjustment Obtained by RTK GPS Observation Northing= <u>159461.12</u> Easting= <u>359082.87</u> Note: NAD 1983, HARN 1996 Adjustment coordinates are NOT compatible with NAD 1983 coordinates Note: 1 Meter=3937/1200 U.S. Survey Feet
--	--

SKETCH OF REFERENCE TIES



Statement of evidence relative to this corner location is on back of page.

I hereby certify that this document and the data contained herein was prepared by me or under my direct supervision.

3-17-2009
Signature Date

Registration No. Minn No 9808

Land Surveyor, Professional Engineer
 County Surveyor, County Engineer

OFFICE OF THE COUNTY RECORDER

County of _____
 I hereby certify that this document was filed in the County Recorder's office at _____ M. on the _____ day of _____ A.D., 20____
 County Recorder _____
 BY _____ Deputy

DOCUMENT NO. _____

NORTHEAST CORNER SECTION 9, TOWNSHIP 39, RANGE 25,
4TH PRINCIPAL MERIDIAN, KANABEC COUNTY, MN

STATEMENT OF EVIDENCE

THE ORIGINAL CORNER WAS SET BY DEPUTY SURVEYOR SILAS BARNARD ON JULY 3,
1855 AND 3 POPLAR TREES AND 1 BIRCH TREE WERE ESTABLISHED AS BEARING
TREES. NO VISIBLE EVIDENCE REMAINS FOR THE CORNER POST OR BEARING TREES.
IN AUGUST 1979 JEFF CAINE DID SURVEY WORK IN SECTIONS 8 AND 9 AND FOUND A
LARGE STONE WITH A CHISELED "X" ON IT. HE SET AN ALUMINUM MONUMENT OVER
THE STONE AND TOOK TIES.
IN JUNE 2007 E.G. RUD AND SONS ESTABLISHED KANABEC COUNTY COORDINATES ON
THIS MONUMENT USING G.P.S. EQUIPMENT.