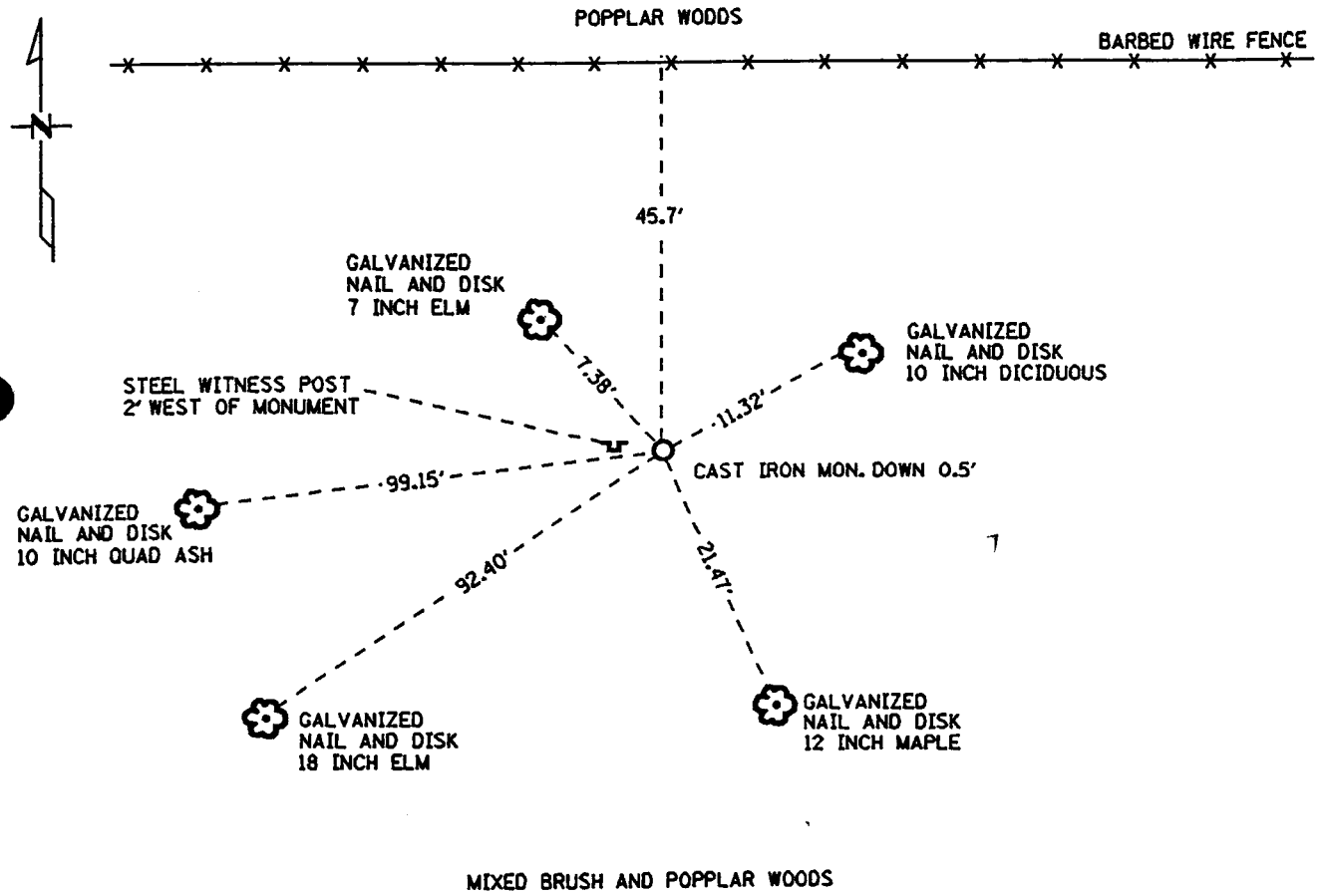


# CERTIFICATE OF LOCATION OF GOVERNMENT CORNER

NORTH QUARTER CORNER \_\_\_\_\_ Corner of Section 15, Township 39 N, Range 25 W, \_\_\_\_\_ P.M.  
 STATE OF MINNESOTA, County of KANABEC

At the corner location shown on the sketch:

- On \_\_\_\_\_ found a \_\_\_\_\_  
DATE
- left monument as found,  lowered monument,  removed monument (explain)
- On 11-17-97 placed a STANDARD MN/DOT CAST IRON MONUMENT  
DATE



Statement of evidence relative to this corner location is on back of page.

I hereby certify that this document and the data contained herein was prepared by me or under my direct supervision.

James W. Nielson 7/13/98  
SIGNATURE DATE  
 Registration No. 11865

- Land Surveyor,  Professional Engineer,  
 County Surveyor,  County Engineer.

OFFICE OF THE COUNTY RECORDER  
 County of Kanabec  
 I hereby certify that this document was filed in the Co. Recorders office at 3:30 P M. on the 8<sup>th</sup> day of October A.D., 1998  
 County Recorder Rhonda A Olson  
 By \_\_\_\_\_, Deputy  
 DOCUMENT NO. \_\_\_\_\_

Statement of Evidence: North Quarter Corner for Section 15, Township 39 North,  
Range 25 West, 4th Principal Meridian

The original public land survey was run in 1855 and a wood post was set to mark the corner.

In 1997 the Minnesota Department of Transportation made an extensive search for this corner, no evidence of the original monument or any of the original bearing trees or remains of could be found. The corner was set by single proportion between the NE corner of Section 15 and the NE corner of Section 16. The adjoining property owners had no knowledge of the corner location.

For details and survey analysis contact the Minnesota Department of Transportation Surveys Office in Baxter.