

# CERTIFICATE OF LOCATION OF GOVERNMENT CORNER

NORTH QUARTER Corner of Section 22, Township 39, Range 25, 4TH P.M.  
 STATE OF MINNESOTA, County of KANABEC

At the corner location shown on the sketch:

SET #7 REBAR WITH ALUMINUM CAP  
 AND ESTABLISHED KANABEC COUNTY COORDINATES ON ITS LOCATION.

Kanabec County U.S. Survey Feet Coordinates  
 NAD 1983, HARN 1996 Adjustment  
 Obtained by RTK GPS Observation

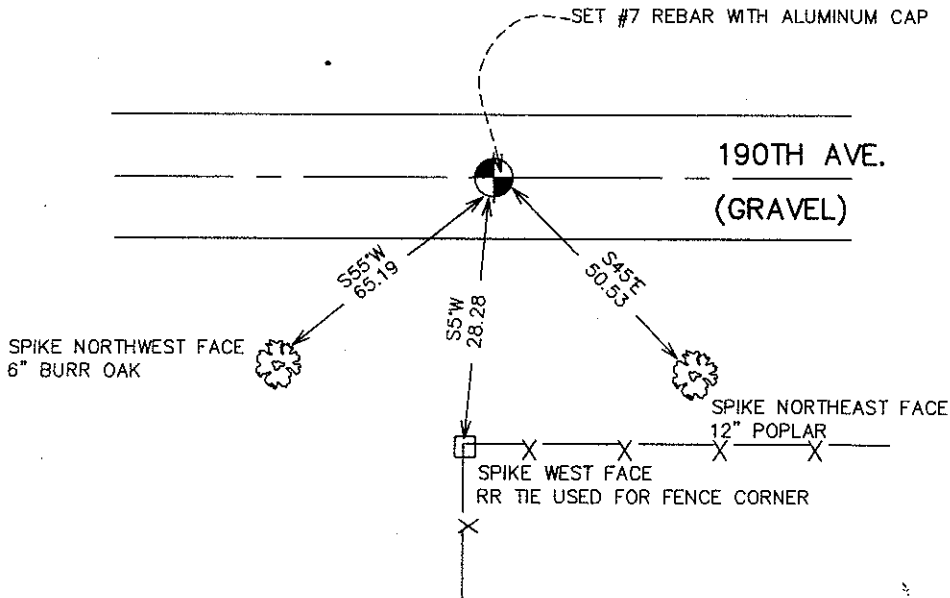
Northing= 148501.77

Easting= 361817.00

Note: NAD 1983, HARN 1996 Adjustment  
 coordinates are NOT compatible with  
 NAD 1983 coordinates

Note: 1 Meter=3937/1200 U.S. Survey Feet

## SKETCH OF REFERENCE TIES



Statement of evidence relative to this corner location is on back of page.

I hereby certify that this document and the data contained herein was prepared by me or under my direct supervision.

*Ernst Thud*  
 Signature

10-05-2007  
 Date

Registration No. 9808

Land Surveyor,       Professional Engineer

County Surveyor,       County Engineer

### OFFICE OF THE COUNTY RECORDER

County of \_\_\_\_\_

I hereby certify that this document was filed in the County Recorder's office at \_\_\_\_\_ M. on the

\_\_\_\_\_ day of \_\_\_\_\_ A.D., 20\_\_

County Recorder \_\_\_\_\_

BY \_\_\_\_\_ Deputy

DOCUMENT NO. \_\_\_\_\_

## NORTH QUARTER CORNER SECTION 22, T39, R25

### **STATEMENT OF EVIDENCE**

THE ORIGINAL CORNER WAS SET BY DEPUTY SURVEYOR SILAS BARNARD ON JULY 1, 1855 AND TWO BEARING TREES ESTABLISHED – NO VISIBLE EVIDENCE REMAINS FOR THE CORNER OR BEARING TREE.

NO OTHER RECORDS OF ANY SUBSEQUENT SURVEYS COULD BE FOUND AT THE KANABEC COUNTY OFFICES.

IN JULY 2007 E.G. RUD AND SONS RAN A SURVEY AROUND SECTIONS 22 AND 27 TO LOCATE EXISTING MONUMENTATION, LINES OF OCCUPATION AND TO DETERMINE SEARCH AREAS. THIS CORNER FALLS ON THE CENTERLINE OF AN EAST–WEST ROAD AND A FENCE RUNNING SOUTH.

ON AUGUST 22, 2007 AN EXCAVATION WAS MADE AT THIS LOCATION, 12 FEET NORTH–SOUTH, 12 FEET EAST–WEST AND 8 INCHES INTO NATURAL GROUND. NO EVIDENCE WAS FOUND FOR THIS CORNER.

THEREFOR THE INTERSECTION OF THE CENTERLINE OF THE EAST–WEST GRAVEL ROAD WITH THE OLD FENCE LINE RUNNING SOUTH WAS ACCEPTED AS THE BEST EVIDENCE FOR THE LOCATION OF THE CORNER. THIS LOCATION FITS WITHIN 4 FEET OF BEING A PROPORTIONATE MEASUREMENT BETWEEN THE NORTHEAST AND NORTHWEST CORNER OF SECTION 22.

A #7 REBAR WITH AN ALUMINUM CAP WAS SET, TIES TAKEN AND KANABEC COUNTY COORDINATES ESTABLISHED USING G.P.S. EQUIPMENT.