

CERTIFICATE OF LOCATION OF GOVERNMENT CORNER

NORTHEAST Corner of Section 21, Township 39, Range 25, 4TH P.M.

STATE OF MINNESOTA, County of KANABEC

At the corner location shown on the sketch:
FOUND SANDSTONE WITH X
SET #7 REBAR WITH ALUMINUM CAP
AND ESTABLISHED KANABEC COUNTY COORDINATES ON ITS LOCATION.

Kanabec County U.S. Survey Feet Coordinates
NAD 1983, HARN 1996 Adjustment
Obtained by RTK GPS Observation

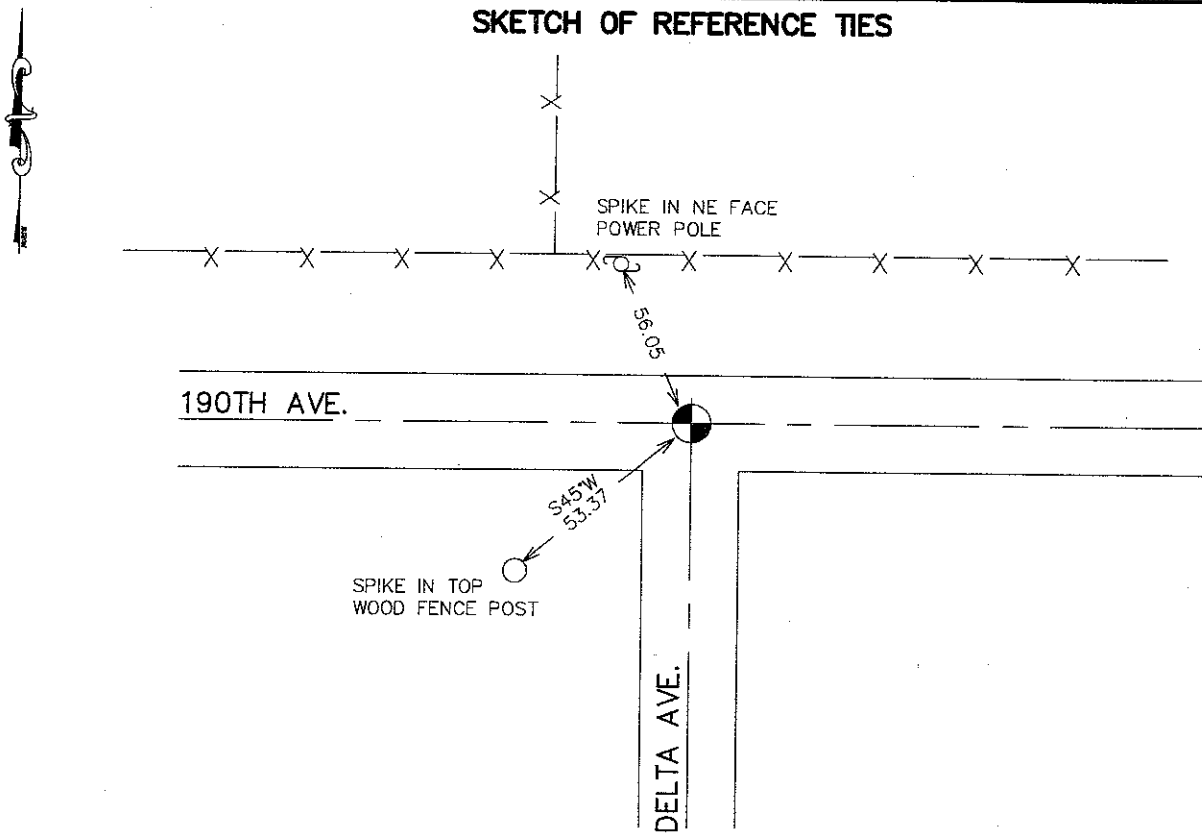
Northing= 148786.27

Easting= 359179.60

Note: NAD 1983, HARN 1996 Adjustment
coordinates are NOT compatible with
NAD 1983 coordinates

Note: 1 Meter=3937/1200 U.S. Survey Feet

SKETCH OF REFERENCE TIES



Statement of evidence relative to this corner location is on back of page.

I hereby certify that this document and the data contained herein was prepared by me or under my direct supervision.

Ernest J. Reed
Signature

11-25-2007
Date

Registration No. Minn No 9808

- Land Surveyor, Professional Engineer
- County Surveyor, County Engineer

OFFICE OF THE COUNTY RECORDER

County of _____

I hereby certify that this document was filed in the County Recorder's office at _____ M. on the _____ day of _____ A.D., 20____

County Recorder _____

BY _____ Deputy

DOCUMENT NO. _____

NORTHEAST CORNER SECTION 21, T39, R25

STATEMENT OF EVIDENCE

THE ORIGINAL CORNER WAS SET BY DEPUTY SURVEYOR SILAS BARNARD IN JULY 1, 1855 AND FOUR BEARING TREES ESTABLISHED - NO VISIBLE EVIDENCE REMAINS FOR THE CORNER OR BEARING TREE.

IN JULY 2007 E.G. RUD AND SONS RAN A SURVEY AROUND SECTIONS 22 AND 27 TO LOCATE LINES OF OCCUPATION, EXISTING MONUMENTS AND TO DETERMINE SEARCH AREAS. THIS CORNER FALLS AT THE INTERSECTION OF AN EAST-WEST ROAD WITH A ROAD RUNNING SOUTH.

ON AUGUST 22, 2007, AN EXCAVATION WAS MADE WITH THE COUNTY BACKHOE 12 FEET NORTH-SOUTH AND 20 FEET EAST-WEST. A BRIDGE SPIKE WAS FOUND AT 3 INCHES DOWN AND AT 18" DOWN A SANDSTONE MONUMENT WITH A CHISELED X WAS FOUND. THE STONE WAS 1.3 FEET NORTHEAST OF THE BRIDGE SPIKE. THE STONE WAS LOWERED AND A #7 REBAR WITH AN ALUMINUM CAP WAS SET. TIES WERE TAKEN AND KANABEC COUNTY COORDINATES WERE ESTABLISHED ON THIS POSITION.