

CERTIFICATE OF LOCATION OF GOVERNMENT CORNER

EAST QUARTER Corner of Section 21, Township 39, Range 25, 4TH P.M.

STATE OF MINNESOTA, County of KANABEC

At the corner location shown on the sketch:

Found sandstone with "X"

SET #7 REBAR WITH ALUMINUM CAP
AND ESTABLISHED KANABEC COUNTY COORDINATES ON ITS LOCATION.

Kanabec County U.S. Survey Feet Coordinates
NAD 1983, HARN 1996 Adjustment
Obtained by RTK GPS Observation

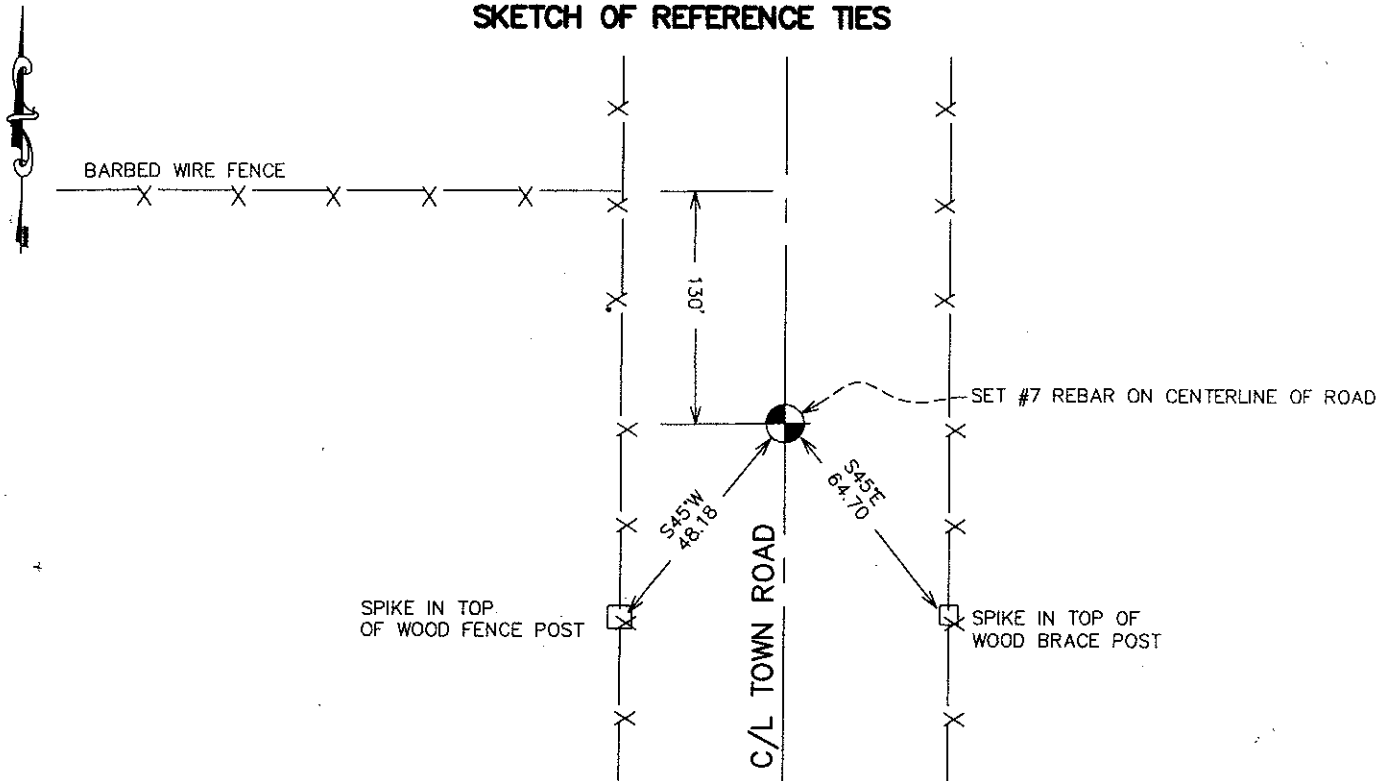
Northing= 146156.19

Easting= 359199.84

Note: NAD 1983, HARN 1996 Adjustment
coordinates are NOT compatible with
NAD 1983 coordinates

Note: 1 Meter=3937/1200 U.S. Survey Feet

SKETCH OF REFERENCE TIES



Statement of evidence relative to this corner location is on back of page.

I hereby certify that this document and the data contained herein was prepared by me or under my direct supervision.

Ernest Blum
Signature

10-05-2007
Date

Registration No. 9808

Land Surveyor, [] Professional Engineer

[] County Surveyor, [] County Engineer

OFFICE OF THE COUNTY RECORDER

County of _____

I hereby certify that this document was filed in the County Recorder's office at _____ M. on the _____ day of _____ A.D., 20 _____

County Recorder _____

BY _____ Deputy

DOCUMENT NO. _____

STATEMENT OF EVIDENCE

The original post was set by Deputy Surveyor Silas Barnard on July 1, 1855 and two bearing trees were established. No visible evidence of the corner or bearing trees remain.

No records of any subsequent surveys could be found at the Kanabec county office.

In July 2007, E.G. Rud and Sons ran a survey around Section 22 and 27 to locate existing monumentation lines of occupation and determine search areas.

This corner falls on the centerline of a north-south gravel road and no occupation line East and West are at this location as land owners on the east and west sides own on both sides of the quarter corner.

On August 22, 2007 an excavation was made with the county backhoe on the centerline of the gravel road and at a proportionate distance between the northeast and southeast corners of section 21. on the centerline of the road and at natural ground (18" deep) remnants of a pointed stake were found. the stake was laying down so the exact position could not be determined. It was approximately 4 ft. north of E.G. Rud position. Nothing else was found in this excavation and there are no occupation lines at this corner so the corner was established by lost methods. A # 7 rebar with aluminum cap was set, ties taken, and Kanabec County Coordinates Established on this position.