

# CERTIFICATE OF LOCATION OF GOVERNMENT CORNER

NORTHEAST Corner of Section 28, Township 39, Range 25, 4TH P.M.  
 STATE OF MINNESOTA, County of KANABEC

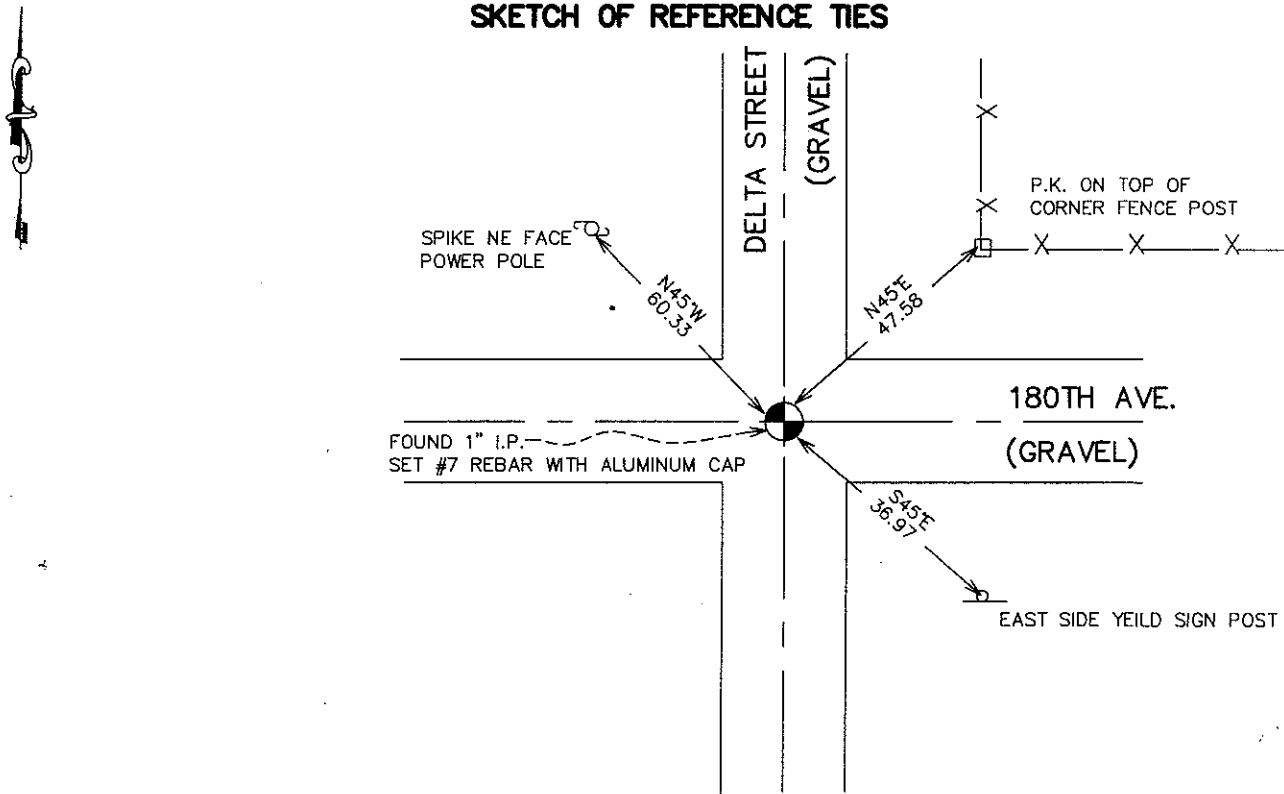
At the corner location shown on the sketch:  
 SET #7 REBAR WITH ALUMINUM CAP  
 AND ESTABLISHED KANABEC COUNTY COORDINATES ON ITS LOCATION.

Kanabec County U.S. Survey Feet Coordinates  
 NAD 1983, HARN 1996 Adjustment  
 Obtained by RTK GPS Observation

Northing= 143527.455  
 Easting= 359221.36

Note: NAD 1983, HARN 1996 Adjustment  
 coordinates are NOT compatible with  
 NAD 1983 coordinates  
 Note: 1 Meter=3937/1200 U.S. Survey Feet

### SKETCH OF REFERENCE TIES



Statement of evidence relative to this corner location is on back of page.

I hereby certify that this document and the data contained herein was prepared by me or under my direct supervision.

Ernest Blund 10-05-2007  
 Signature Date

Registration No. 9808

Land Surveyor,      Professional Engineer  
 County Surveyor,    County Engineer

### OFFICE OF THE COUNTY RECORDER

County of \_\_\_\_\_

I hereby certify that this document was filed in the County Recorder's office at \_\_\_\_\_ M. on the \_\_\_\_\_ day of \_\_\_\_\_ A.D., 20\_\_\_\_

County Recorder \_\_\_\_\_  
 BY \_\_\_\_\_ Deputy

DOCUMENT NO. \_\_\_\_\_

## NORTHEAST CORNER SECTION 28, T39, R25

### STATEMENT OF EVIDENCE

THE ORIGINAL CORNER WAS SET BY DEPUTY SURVEYOR SILAS BARNARD ON JULY 1, 1855 AND FOUR BEARING TREES ESTABLISHED - NO VISIBLE EVIDENCE REMAINS FOR THE CORNER OR BEARING TREE.

THERE IS A ROAD OPENING DATED NOV. 30, 1910 ALONG THE WEST LINE OF SECTION 27 AND A ROAD OPENING ALONG THE NORTH SIDE OF SECTION 27 DATED SEPTEMBER 1, 1902.

IN BOOK A1 OF SURVEYS PAGES 86 AND 87 JOHN NELSON RECORDED A SURVEY OF SECTION 27 DATED APRIL 14, 1911. ON THIS SURVEY HE STATES SETTING A SANDSTONE AT THIS CORNER AND MEASURING A TOTAL DISTANCE OF 80.66 CHAINS OR 5323.56 FEET ALONG THE NORTH LINE. ON THE WEST LINE OF SECTION 27 NELSON MEASURED 80.84 CHAINS OR 5335.44 FEET. E.G. RUD MEASURED 5345.65 ALONG THE WEST LINE AND 5343.79 ALONG THE NORTH LINE.

IN JULY 2007 E.G. RUD AND SONS RAN A SURVEY AROUND SECTIONS 22&27 TO LOCATE EXISTING MONUMENTATION, LINES OF OCCUPATION AND TO DETERMINE SEARCH AREAS. THIS CORNER FALLS ON THE CENTERLINE OF AN EAST-WEST AND NORTH-SOUTH COUNTY ROAD.

ON AUGUST 22, 2007 AN EXCAVATION WAS MADE WITH THE COUNTY BACKHOE. AT 6 INCHES DOWN A 1" X 18" IRON PIPE WAS FOUND. THIS WAS TIED OUT AND EXCAVATION CONTINUED. DIRECTLY UNDER THE 1" PIPE A 9" BRIDGE SPIKE WAS FOUND 5"+/- NORTH OF THE PIPE AND SPIKE A 1"X2" WOOD HUB WAS FOUND. NOTHING ELSE WAS FOUND IN THE EXCAVATION. ANY OTHER EVIDENCE WAS PROBABLY DESTROYED WITH THE CONSTRUCTION OF THE ROADS.

THE 1" PIPE AND BRIDGE SPIKE WERE ACCEPTED AS THE PERPETUATED LOCATION FOR THIS CORNER. A #7 REBAR WITH ALUMINUM CAP WAS SET, TIES TAKEN AND KANABEC COUNTY COORDINATES ESTABLISHED ON THIS POSITION.