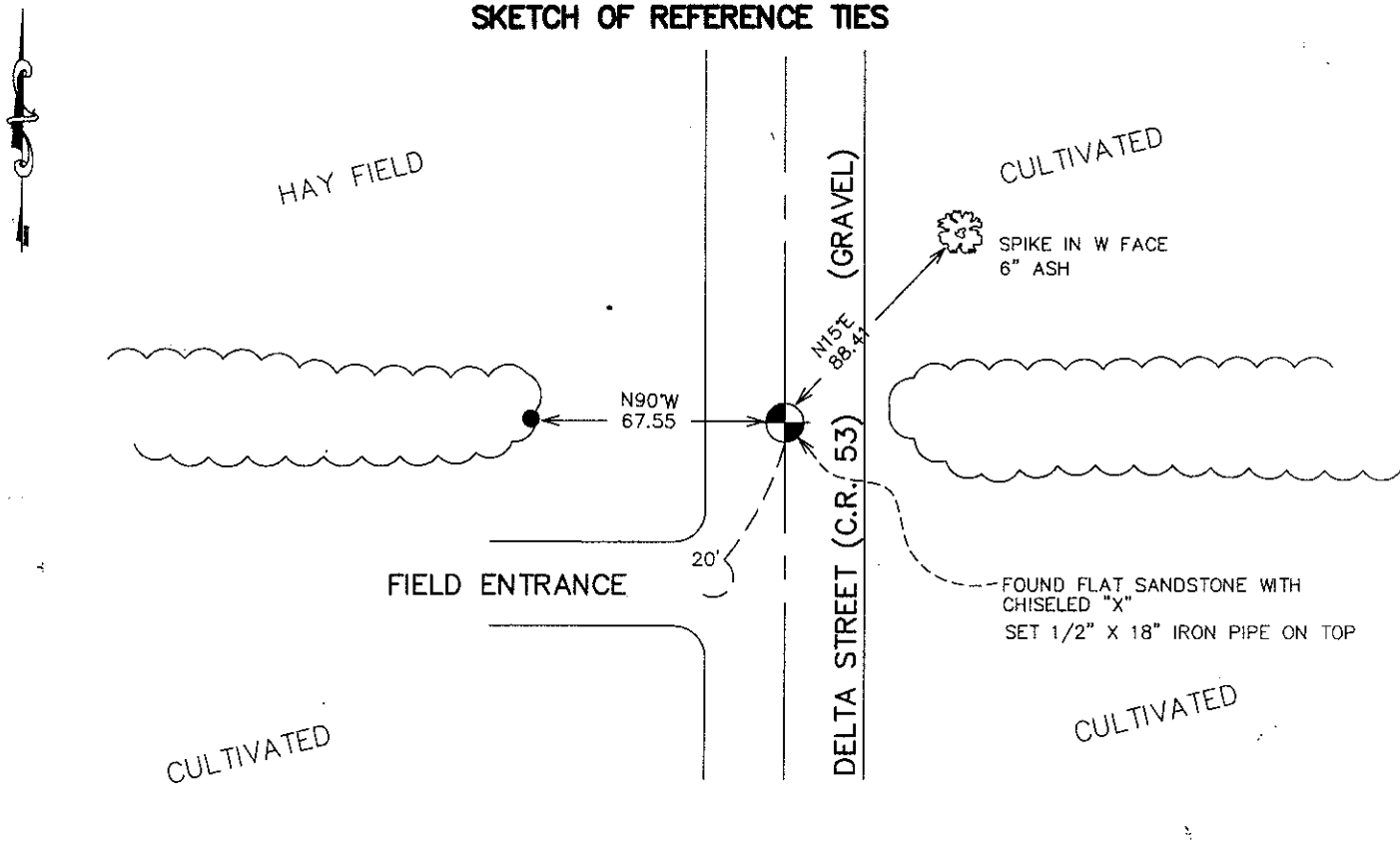


CERTIFICATE OF LOCATION OF GOVERNMENT CORNER

EAST QUARTER Corner of Section 28, Township 39, Range 25, 4TH P.M.
 STATE OF MINNESOTA, County of KANABEC

At the corner location shown on the sketch: SET 1/2" IRON PIPE AND ESTABLISHED KANABEC COUNTY COORDINATES ON ITS LOCATION.	Kanabec County U.S. Survey Feet Coordinates NAD 1983, HARN 1996 Adjustment Obtained by RTK GPS Observation Northing= <u>140855.91</u> Easting= <u>359246.07</u> Note: NAD 1983, HARN 1996 Adjustment coordinates are NOT compatible with NAD 1983 coordinates Note: 1 Meter=3937/1200 U.S. Survey Feet
--	--

SKETCH OF REFERENCE TIES



Statement of evidence relative to this corner location is on back of page.

I hereby certify that this document and the data contained herein was prepared by me or under my direct supervision.

Ernst & Rud 10-05-2007
Signature Date

Registration No. 9808

Land Surveyor, Professional Engineer
 County Surveyor, County Engineer

OFFICE OF THE COUNTY RECORDER

County of _____

I hereby certify that this document was filed in the County Recorder's office at _____ M. on the _____ day of _____ A.D., 20____

County Recorder _____
 BY _____ Deputy

DOCUMENT NO. _____

EAST QUARTER CORNER SECTION 28, T39, R25

STATEMENT OF EVIDENCE

THE ORIGINAL CORNER POST WAS SET BY DEPUTY SURVEYOR SILAS BARNARD ON JULY 1, 1855. TWO BEARING TREES WERE ESTABLISHED BUT NO VISIBLE EVIDENCE REMAINS OF THE CORNER OR BEARING TREES.

THERE IS A ROAD OPENING DATED NOVEMBER 30, 1910 ALONG THE WEST LINE OF SECTION 27 AND A ROAD OPENING ALONG THE NORTH SIDE OF SECTION 27 DATED SEPTEMBER 1, 1902.

IN BOOK A1 OF SURVEYS PAGES 86 AND 87 JOHN NELSON RECORDED A SURVEY OF SECTION 27 DATED APRIL 14, 1911. ON THIS SURVEY HE STATES A SANDSTONE AT THIS CORNER AND MEASURING A TOTAL DISTANCE OF 80.66 CHAINS OR 5323.56 FEET AND ON THE WEST LINE OF 27 ALONG THE WEST LINE OF 27. NELSON MEASURED 80.84 CHAINS OR 5335.44 FEET. E.G. RUD MEASURED 5343.79 ALONG THE NORTH LINE AND 5345.65 ALONG THE WEST LINE.

IN JULY 2007, E.G. RUD AND SONS RAN A SURVEY AROUND SECTIONS 22 AND 27 TO LOCATE EXISTING MONUMENTATION; LINES OF OCCUPATION AND TO DETERMINE SEARCH AREAS. THIS CORNER FALLS ON THE CENTERLINE OF A NORTH SOUTH ROAD AND TREE LINES RUNNING EAST AND WEST.

ON AUGUST 22, 2007 AN EXCAVATION WITH THE COUNTY BACKHOE WAS MADE. AT 4" DOWN A 1" X 14" IRON PIPE WAS FOUND. THIS WAS TIED OUT AND EXCAVATION CONTINUED. AT 2 FEET BELOW THE SURFACE A FLAT SANDSTONE WITH A CHISELED "X" WAS FOUND. THIS MUST BE THE SANDSTONE THAT JOHN NELSON SET IN 1911. THIS SANDSTONE WAS ACCEPTED AS THE BEST EVIDENCE FOR THE PERPETUATION OF THIS CORNER. THE SANDSTONE WAS 1 FOOT NORTH AND 1 FOOT WEST OF THE 1" IRON PIPE. THE SANDSTONE WAS LEFT IN PLACE AND A 1/2" X 18" IRON WAS SET ON TOP. TIES WERE TAKEN AND KANABEC COUNTY COORDINATES WERE ESTABLISHED ON THIS POSITION.