

CERTIFICATE OF LOCATION OF GOVERNMENT CORNER

SOUTH QUARTER Corner of section 27, Township 39, Range 25, 4TH P.M.
 STATE OF MINNESOTA, County of KANABEC

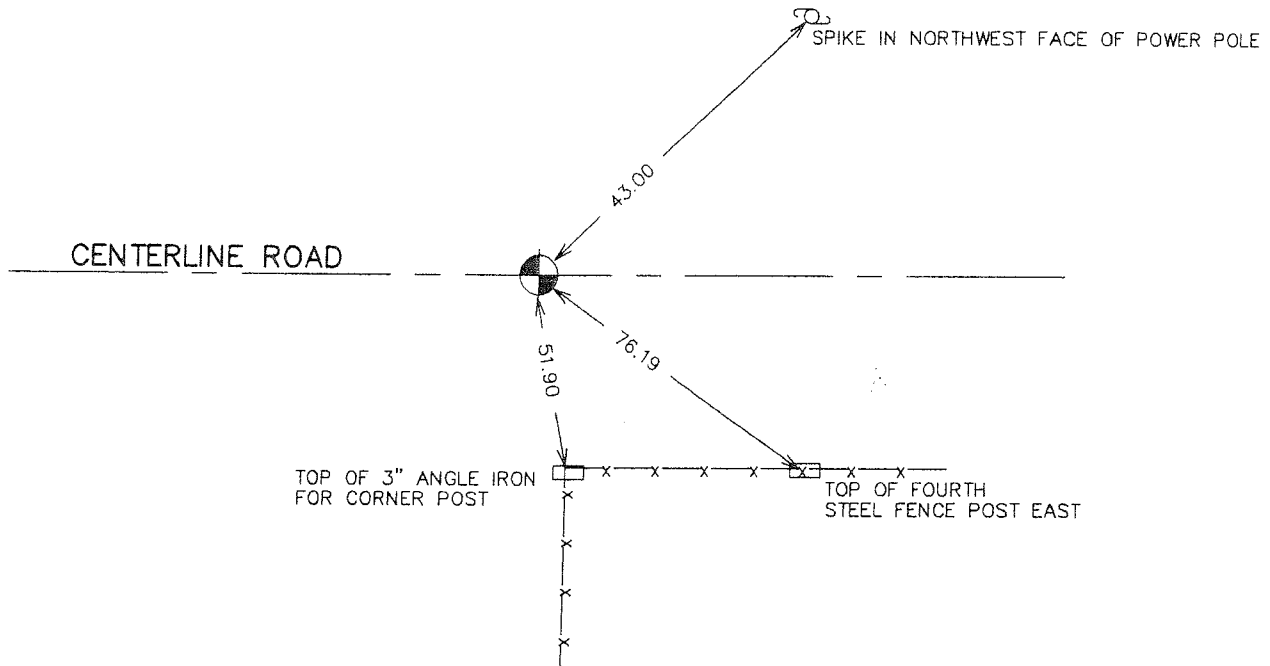
At the corner location shown on the sketch:
 FOUND THIS MONUMENT
 AND ESTABLISHED G.P.S. COORDINATES ON ITS LOCATION.

Kanabec County U.S. Survey Feet Coordinates
 NAD 1983, HARN 1996 Adjustment
 Obtained by RTK GPS Observation

Northing= 137886.36
 Easting= 361943.40

Note: NAD 1983, HARN 1996 Adjustment
 coordinates are NOT compatible with
 NAD 1983 coordinates
 Note: 1 Meter=3937/1200 U.S. Survey Feet

SKETCH OF REFERENCE TIES FROM TIE SHEET #409



Statement of evidence relative to this corner location is on back of page.

I hereby certify that this document and the data contained herein was prepared by me or under my direct supervision.

Ernest Blund 1-24-2007
 Signature Date

Registration No. Minn No 9808

Land Surveyor, Professional Engineer
 County Surveyor, County Engineer

OFFICE OF THE COUNTY RECORDER

County of _____

I hereby certify that this document was filed in the County Recorder's office at _____ M. on the

_____ day of _____ A.D., 20__

County Recorder _____

BY _____ Deputy

DOCUMENT NO. _____

SOUTH QUARTER CORNER SECTIONS 27, T39, R25

STATEMENT OF EVIDENCE

M.B. RUDE SET MONUMENT FROM HIS SURVEY OF COUNTY ROAD #10. THE MONUMENT WAS SET 10.97' WEST OF HIGHWAY P.I. POINT IS ON LINE AND SPLITS BETWEEN SOUTHWEST AND SOUTHEAST CORNERS OF SECTION 27 AND FITS OCCUPATION LINES QUARTER MILE EAST AND WEST.

IN 2004 E.G. RUD AND SONS FOUND THIS MONUMENT AND ESTABLISHED KANABEC COUNTY COORDINATES ON THIS LOCATION. THIS FITS WITHIN 0.05' OF A FOOT WITHIN LINE AND SPLIT.