

CERTIFICATE OF LOCATION OF GOVERNMENT CORNER

SOUTHEAST Corner of section 28, Township 39, Range 25, 4TH P.M.
STATE OF MINNESOTA, County of KANABEC

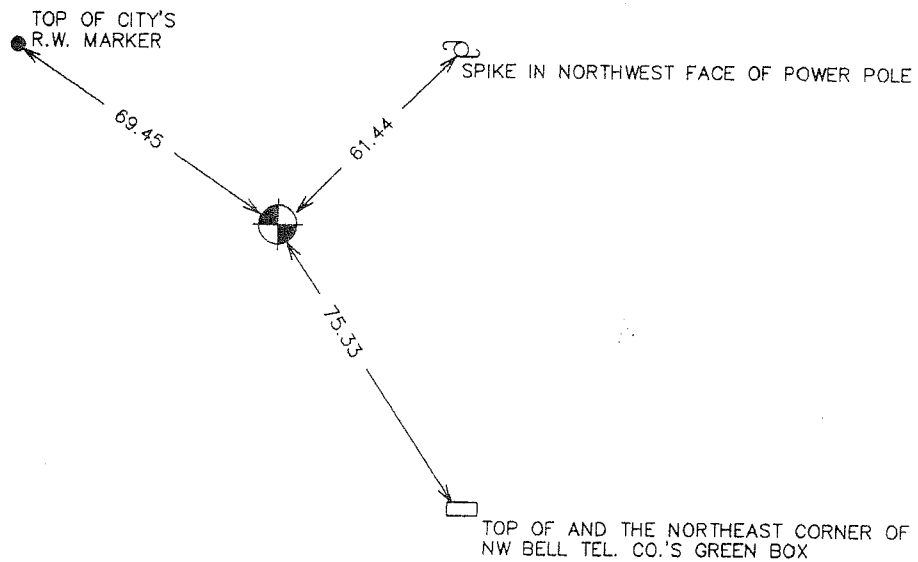
At the corner location shown on the sketch:
FOUND THIS MONUMENT
AND ESTABLISHED G.P.S. COORDINATES ON ITS LOCATION.

Kanabec County U.S. Survey Feet Coordinates
NAD 1983, HARN 1996 Adjustment
Obtained by RTK GPS Observation

Northing= 138182.21
Easting= 359283.33

Note: NAD 1983, HARN 1996 Adjustment
coordinates are NOT compatible with
NAD 1983 coordinates
Note: 1 Meter=3937/1200 U.S. Survey Feet

SKETCH OF REFERENCE TIES FROM TIE SHEET #41



Statement of evidence relative to this corner location is on back of page.

I hereby certify that this document and the data contained herein was prepared by me or under my direct supervision.

Ernest Alund 1-24-2007
Signature Date

Registration No. Minn No 9808

Land Surveyor, Professional Engineer
 County Surveyor, County Engineer

OFFICE OF THE COUNTY RECORDER

County of _____

I hereby certify that this document was filed in the County Recorder's office at _____ M. on the _____ day of _____ A.D., 20____

County Recorder _____

BY _____ Deputy

DOCUMENT NO. _____

SOUTHEAST CORNER SECTIONS 28, T39, R25

STATEMENT OF EVIDENCE

M.B. RUDE SET MONUMENT FROM HIS SURVEY OF COUNTY ROAD #10. PLACE OF MONUMENT FITS NORTH-SOUTH AND EAST-WEST ROADS AND RUDES STATED THAT THIS IS THE BEST AVAILABLE EVIDENCE OF ANY RECORDS FOR THIS CORNER.

IN 2004 E.G. RUDE AND SONS LOCATED THIS MONUMENT AND ESTABLISHED KANABEC COUNTY COORDINATES ON THIS MONUMENT. THIS FITS NORTH QUARTER AND NORTHEAST CORNER OF SECTION 34 WITHIN 0.05 OF A FOOT.