

CERTIFICATE OF LOCATION OF GOVERNMENT CORNER

EAST QUARTER Corner of Section 33, Township 39, Range 25, 4TH P.M.
 STATE OF MINNESOTA, County of KANABEC

At the corner location shown on the sketch:
 ON 11/4/2014 SET A #7 REBAR WITH AN ALUMINUM CAP.

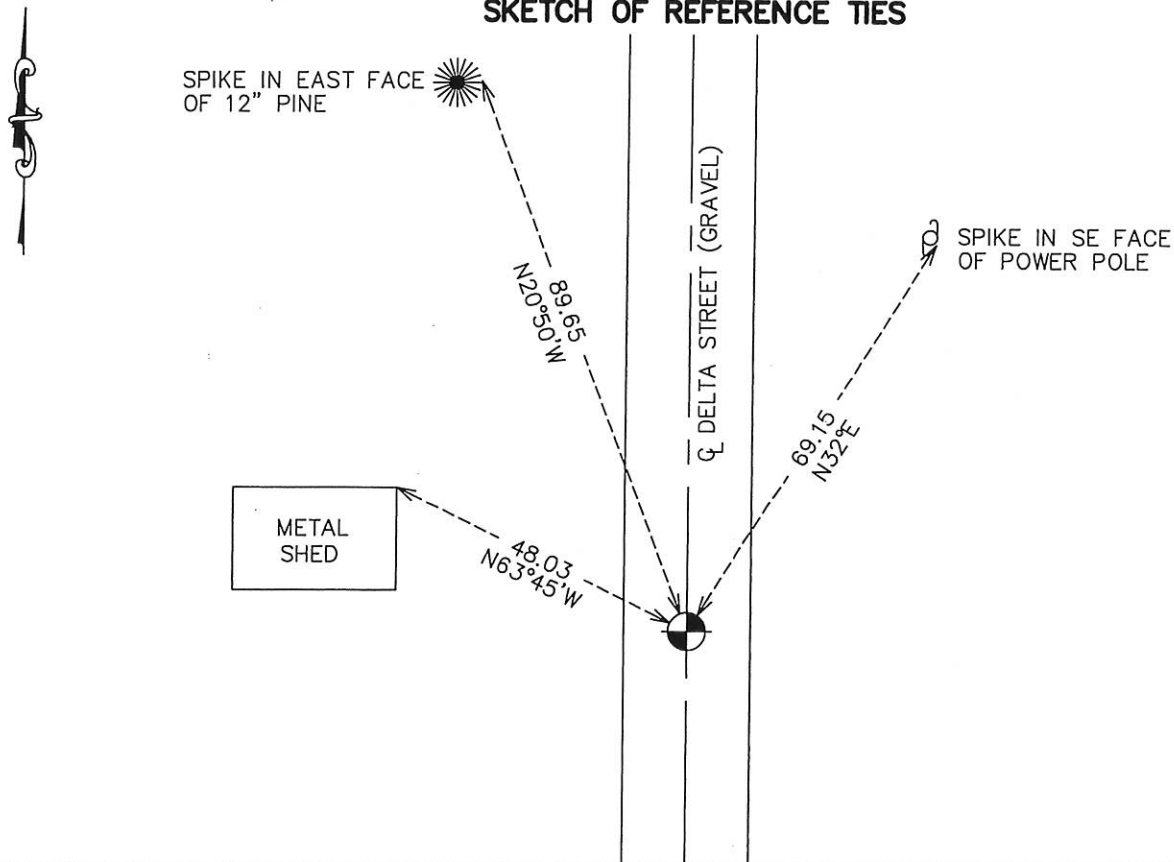
Kanabec County U.S. Survey Feet Coordinates
 NAD 1983, HARN 1996 Adjustment
 Obtained by RTK GPS Observation

Northing= 135540.219
 Easting= 359343.243

Note: NAD 1983, HARN 1996 Adjustment
 coordinates are NOT compatible with
 NAD 1983 coordinates

Note: 1 Meter=3937/1200 U.S. Survey Feet

SKETCH OF REFERENCE TIES



Statement of evidence relative to this corner location is on back of page.

I hereby certify that this document and the data contained herein was prepared by me or under my direct supervision.

Ernest J. Rud 12-16-14
 Signature Date

Registration No. 9808

Land Surveyor, Professional Engineer

County Surveyor, County Engineer

OFFICE OF THE COUNTY RECORDER

County of _____

I hereby certify that this document was filed in the County Recorder's office at _____ M. on the

_____ day of _____ A.D., 20 _____

County Recorder _____

BY _____ Deputy

DOCUMENT NO. _____

STATEMENT OF EVIDENCE

East Corner Section 33, Township 39, Range 25

3925081

The original post was set by a deputy surveyor Silas Barnard on July 1, 1855 and two bearing trees noted as;

36" Pine bearing South 80° East at 5 Links

10" Sugar Maple bearing South 70° West at 20 Links

No evidence could be found for posts or accessories.

The government notes show a distance of 80 chains along this line.

On March 29, 1899 J.M. Vickerey did a road survey along the East line of Section 33, but does not indicate locating the quarter corner. He measured 77 chains along this line and doesn't state what monuments were at the section corners.

On April 2nd 1901 John Nelson did a survey around Section 33 and found the government post at this corner and made a new one as the old was near gone. He noted a 36" Pine bearing North 12° 30' East at 1.19 chains. He recorded distances of 40.06 chains (2643.96 feet) to the northeast corner of Section 34 and 38.54 chains (2543.64 feet) to the southeast corner. The total mile was 5187.6 feet and today we measure 5185.6 feet.

This corner falls in the centerline of a gravel road running north and south with no occupation lines east or west. On October 20, 2014 an excavation was made at the location of John Nelson's measured distances with the county backhoe. Nate operated Dave was his helper. The excavation was 8 feet wide and 30 feet long. Just below the surface a ½" iron pipe was found at John Nelson's prorated location. 18 inches down a solid rod 5/8" X 14" was found lying down. We could not determine its original location. We continued to excavate 8 inches into natural soil and did not find any additional evidence. Therefore we determined the best evidence for the location of this corner was the records of John Nelson's 1901 survey. We set a #7 rebar with an aluminum cap, took ties and established Kanabec County Coordinates on this location.