

CERTIFICATE OF LOCATION OF GOVERNMENT CORNER

EAST QUARTER Corner of section 3, Township 39, Range 25, 4TH P.M.

STATE OF MINNESOTA, County of KANABEC

At the corner location shown on the sketch:

SET 1/2" IRON PIPE
ACCORDING TO G.P.S. COORDINATES ON ITS LOCATION.

Kanabec County U.S. Survey Feet Coordinates
NAD 1983, HARN 1996 Adjustment
Obtained by RTK GPS Observation

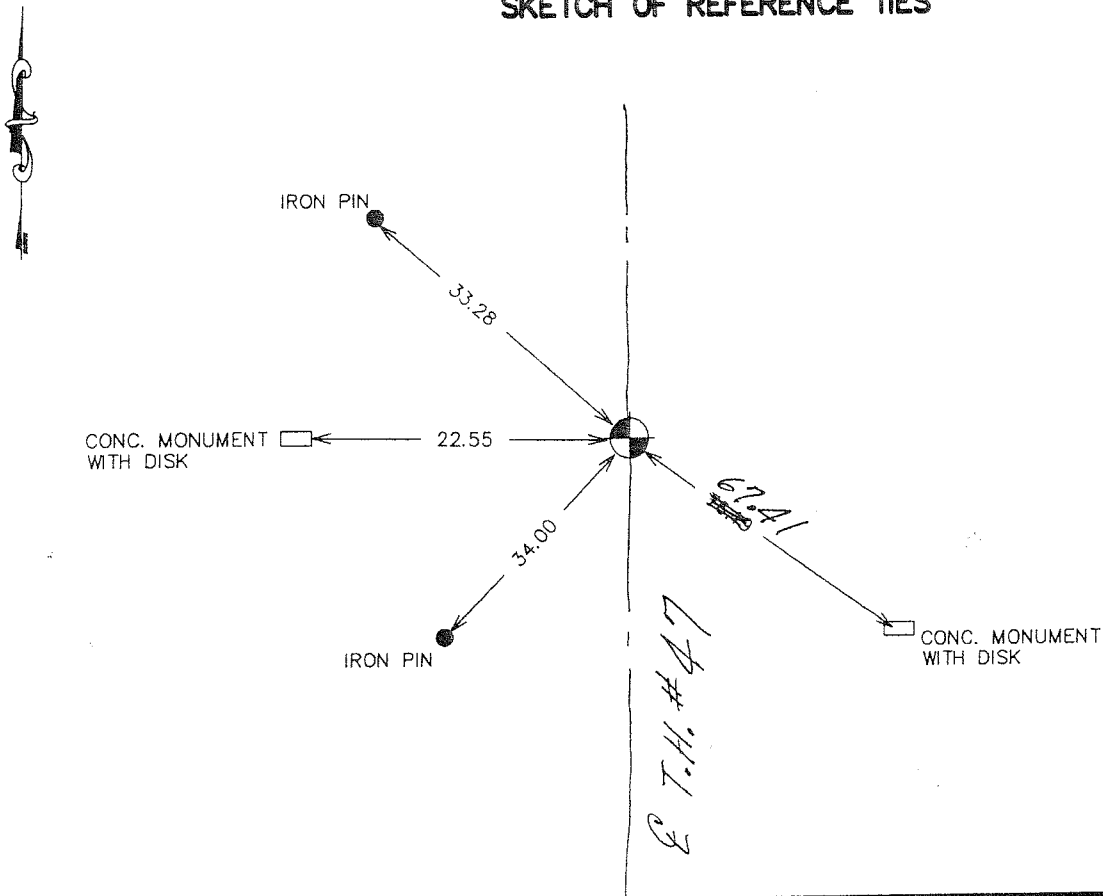
Northing= 161812.51

Easting= 364283.76

Note: NAD 1983, HARN 1996 Adjustment
coordinates are NOT compatible with
NAD 1983 coordinates

Note: 1 Meter=3937/1200 U.S. Survey Feet

SKETCH OF REFERENCE TIES



Statement of evidence relative to this corner location is on back of page.

I hereby certify that this document and the data contained herein was prepared by me or under my direct supervision.

Ernest J. [Signature] 1-24-2007
Signature Date

Registration No. Mpn No 9808

Land Surveyor, Professional Engineer
 County Surveyor, County Engineer

OFFICE OF THE COUNTY RECORDER

County of _____

I hereby certify that this document was filed in the County Recorder's office at _____ M. on the

_____ day of _____ A.D., 20____

County Recorder _____

BY _____ Deputy

DOCUMENT NO. _____

EAST QUARTER CORNER SECTIONS 3, T39, R25

STATEMENT OF EVIDENCE

ALL OF THE ORIGINAL BEARING TREES ARE NOW GONE.

JOHN NELSON, THE FORMER COUNTY SURVEYOR, ESTABLISHED THIS CORNER IN 1909 IN A ROAD SURVEY, BUT DOES NOT SHOW WHAT WAS SET.

CHARLES HANDSHU SET THIS CORNER IN 1938, BUT HE DID NOT SHOW WHAT WAS SET.

IN 1941, THE MINNESOTA DEPARTMENT OF TRANSPORTATION FOUND A 8" SHIP SPIKE AT THIS CORNER AND IN THE 1950'S THEY REPLACED IT WITH A CONCRETE MONUMENT WITH A DISK. IN 1981, THEIR RECORDS SHOW THEY FOUND THE CONCRETE MONUMENT WITH THE DISK 6" BELOW THE SURFACE OF HIGHWAY NO. 47 AND SET A P.K. NAIL ON THE SURFACE. THEY SET 5 REFERENCE MONUMENTS.

ON MAY 28, 1985, M.B. RUDE FOUND THE P.K. NAIL AND 4 OF THE DEPARTMENT OF TRANSPORTATION REFERENCE MONUMENTS WHICH CHECKED. HE SET A 1/2" IRON PIPE TO REPLACE THE P.K. NAIL TO MARK THIS CORNER.

IN JULY 2005 E.G. RUD AND SONS FOUND THE 1/2 INCH IRON PIPE AND ESTABLISHED KANABEC COUNTY COORDINATES ON THIS POSITION. DURING THE SUMMER OF 2006 THE MINNESOTA HIGHWAY DEPARTMENT DID A MILLING AND OVERLAY BITUMINOUS SURFACING ON T.H. 47.

IN JANUARY 2007 E.G. RUD AND SONS REPLACED THIS MONUMENT BASED ON G.P.S. COORDINATES AND SET A 1/2" IRON PIPE AT THE SURFACE.