

# CERTIFICATE OF LOCATION OF GOVERNMENT CORNER

NORTH QUARTER Corner of Section 11, Township 39, Range 25, 4TH P.M.

STATE OF MINNESOTA, County of KANABEC

At the corner location shown on the sketch:  
On 08/24/2004 Set a Kanabec County Monument.

Kanabec County U.S. Survey Feet Coordinates  
NAD 1983, HARN 1996 Adjustment  
Obtained by RTK GPS Observation

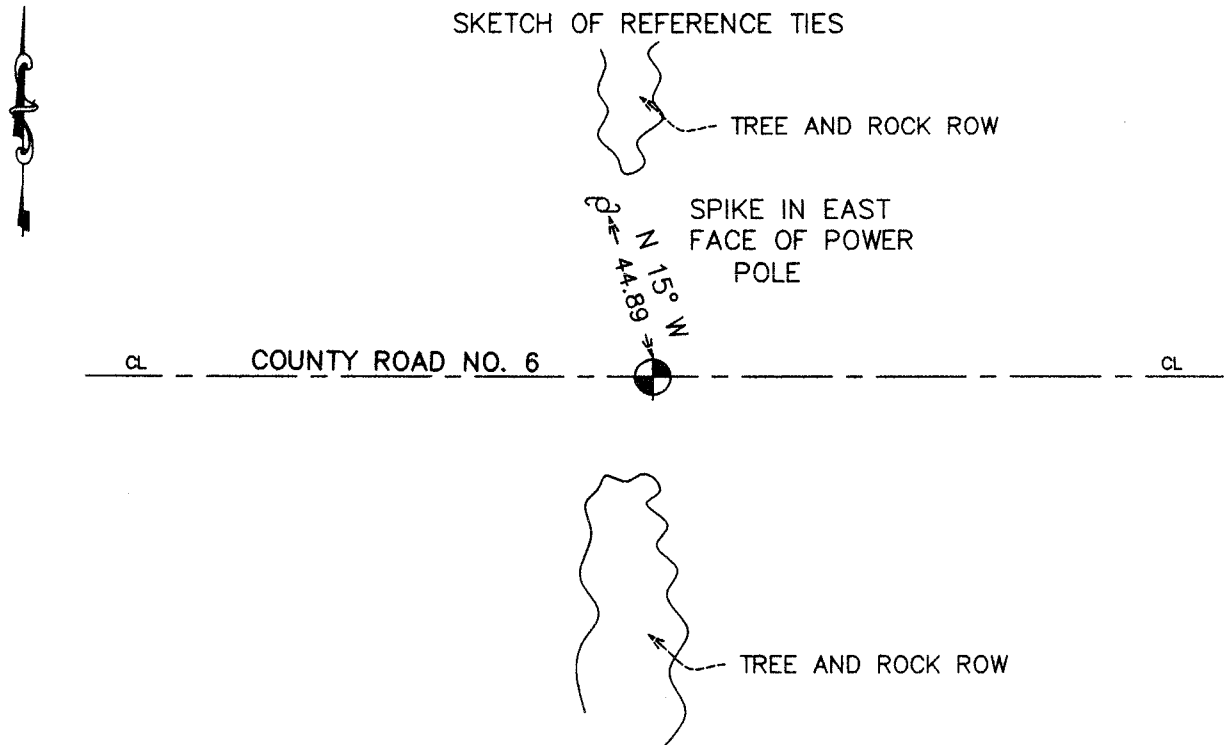
Northing= 158986.45

Easting= 367106.41

Note: NAD 1983, HARN 1996 Adjustment  
coordinates are NOT compatible with  
NAD 1983 coordinates

Note: 1 Meter=3937/1200 U.S. Survey Feet

### SKETCH OF REFERENCE TIES



Statement of evidence relative to this corner location is on back of page.

I hereby certify that this document and the data contained herein was prepared by me or under my direct supervision.

*Ernest Elred*  
Signature

2-1-2005  
Date

Registration No. 9800

Land Surveyor,      [ ] Professional Engineer

[ ] County Surveyor,      [ ] County Engineer

### OFFICE OF THE COUNTY RECORDER

County of \_\_\_\_\_

I hereby certify that this document was filed in the County Recorder's office at \_\_\_\_\_ M. on the \_\_\_\_\_ day of \_\_\_\_\_ A.D., 20\_\_\_\_

County Recorder \_\_\_\_\_

BY \_\_\_\_\_ Deputy

**DOCUMENT NO.** \_\_\_\_\_

## STATEMENT OF EVIDENCE

From Tie Sheet 681A

All of the original government bearing trees are now gone.

The former County Surveyor, John Nelson, set a stone with a "+" carved on the top at this corner in 1910, in a survey of Section 11.

Certificate #119 on file at the County Recorder's Office shows a rock with a "+" carved on it at this corner and ties (no date or name). These ties are now gone.

On April 25, 1983, we ran a survey along the north line of Sections 11 and 12 and located the existing monuments and lines of occupation.

On April 26, 1983, we made an excavation with the backhoe at this corner. At 2.5 feet below the surface, we found the rock with the "+" carved on the top, per the certificate #119.

We left the rock in place and set a 7/8" by 24" capped rebar on top of the rock to mark this corner.

In August 2004, we did a survey around Sections 11, 12, and 13 to locate existing monumentation and tie in lines of occupation. County Road No. 6 had been reconstructed since 1983, so no evidence or ties to the corner set by M.B. Rude remained. We reset the corner from M.B. Rude's survey, set a #7 rebar, took new ties and established Kanabec County coordinates using GPS equipment.