

CERTIFICATE OF LOCATION OF GOVERNMENT CORNER

SOUTHEAST Corner of Section 03, Township 39, Range 25, 4TH P.M.

STATE OF MINNESOTA, County of KANABEC

At the corner location shown on the sketch:
IN AUGUST 2004 FOUND THIS MONUMENT
AND ESTABLISHED G.P.S. COORDINATES ON ITS LOCATION.

Kanabec County U.S. Survey Feet Coordinates
NAD 1983, HARN 1996 Adjustment
Obtained by RTK GPS Observation

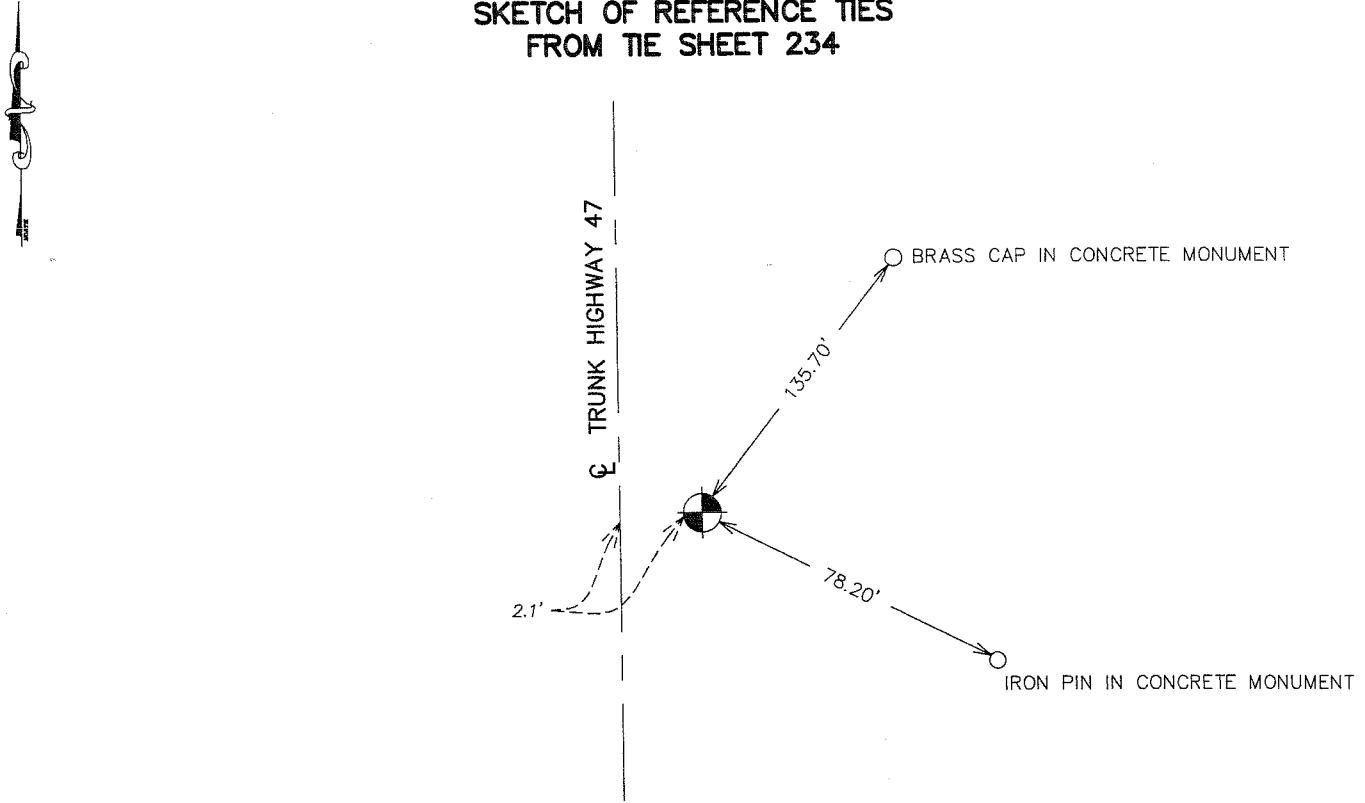
Northing= 159171.06

Easting= 364341.05

Note: NAD 1983, HARN 1996 Adjustment
coordinates are NOT compatible with
NAD 1983 coordinates

Note: 1 Meter=3937/1200 U.S. Survey Feet

SKETCH OF REFERENCE TIES FROM TIE SHEET 234



Statement of evidence relative to this corner location is on back of page.

I hereby certify that this document and the data contained herein was prepared by me or under my direct supervision.

Ernest Hub
Signature

1-23-2004
Date

Registration No. Min No 9808

Land Surveyor, Professional Engineer

County Surveyor, County Engineer

OFFICE OF THE COUNTY RECORDER

County of _____

I hereby certify that this document was filed in the County Recorder's office at _____ M. on the

_____ day of _____ A.D., 20__

County Recorder _____

BY _____ Deputy

DOCUMENT NO. _____

STATEMENT OF EVIDENCE

THIS CORNER WAS ORIGINALLY SET BY DEPUTY SURVEYOR SILAS BARNARD IN JULY 1855. NO EVIDENCE TO THE CORNER OR BEARING TREES REMAIN.

TIE SHEET #234 INDICATES A CAST IRON MONUMENT WAS SET BY MIN. D.O.T. IN NOVEMBER OF 1966.

M.B. RUDE USED THIS CORNER IN 1983 FOR THE ALIGNMENT OF COUNTY ROAD 6.

IN AUGUST 2004 WE FOUND THIS MONUMENT AND AGREED WITH M.B. RUDE'S MEASUREMENTS.

WE ESTABLISHED KANABEC COUNTY COORDINATES ON THIS POSITION USING G.P.S. EQUIPMENT.