

CERTIFICATE OF LOCATION OF GOVERNMENT CORNER

EAST QUARTER Corner of Section 10, Township 39, Range 25, 4TH P.M.

STATE OF MINNESOTA, County of KANABEC

At the corner location shown on the sketch:

SET A P.K.
AND ESTABLISHED TIES

Kanabec County U.S. Survey Feet Coordinates
NAD 1983, HARN 1996 Adjustment
Obtained by RTK GPS Observation

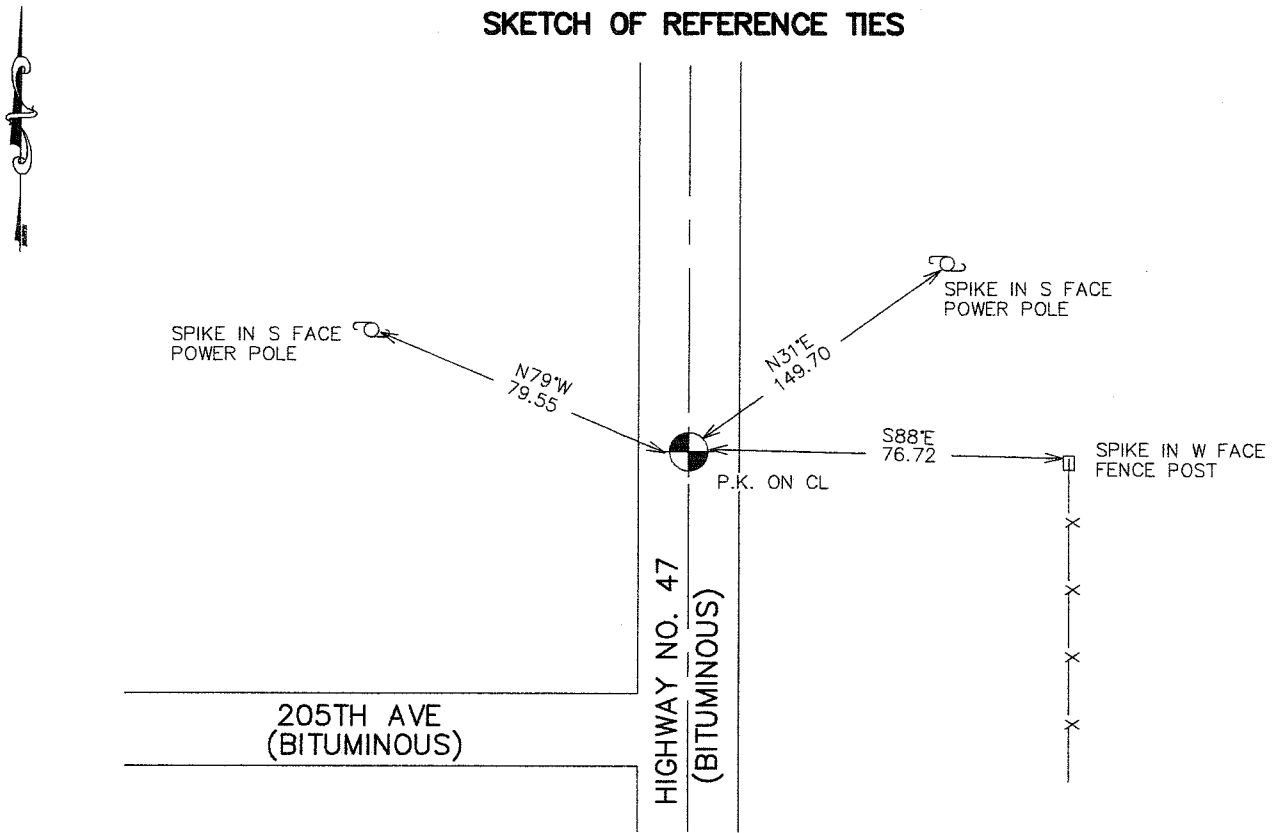
Northing= 156436.46

Easting= 364314.59

Note: NAD 1983, HARN 1996 Adjustment
coordinates are NOT compatible with
NAD 1983 coordinates

Note: 1 Meter=3937/1200 U.S. Survey Feet

SKETCH OF REFERENCE TIES



Statement of evidence relative to this corner location is on back of page.

I hereby certify that this document and the data contained herein was prepared by me or under my direct supervision.

Ernst J. Reed
Signature

3-30-2007
Date

OFFICE OF THE COUNTY RECORDER

County of _____

I hereby certify that this document was filed in the County Recorder's office at _____ M. on the _____ day of _____ A.D., 20____

County Recorder _____

BY _____ Deputy

DOCUMENT NO. _____

Registration No. Minn No 9808

Land Surveyor, [] Professional Engineer

[] County Surveyor, [] County Engineer

EAST QUARTER CORNER SECTION 10, T39, R25

STATEMENT OF EVIDENCE

THE ORIGINAL CORNER WAS SET BY DEPUTY SURVEYOR SILAS BARNARD IN JUNE OF 1855 AND 2 BEARING TREES ESTABLISHED. ANY PHYSICAL EVIDENCE FOR THE CORNER AND BEARING TREES NO LONGER REMAIN.

THIS CORNER FALLS ON THE CENTERLINE OF STATE HIGHWAY 47.

IN BOOK A-1 OF SURVEYS, PAGE 68 AND 69 A SURVEY MADE BY JOHN NELSON IS RECORDED OF SECTION 11. JOHN MEASURED 82.92 CHAINS (5472.72 FEET) ALONG THE WEST LINE OF SECTION 11. TODAY WE MEASURED 5477.55 FEET. JOHN SET A SANDSTONE FOR THIS CORNER AND TOOK ONE TIE.

IN 1996 KEN WASNIE OF THE MINNESOTA HIGHWAY DEPARTMENT FOUND A STONE WITH AN X CHISELED ON IT 8" BELOW THE SURFACE. KEN SET A CAST IRON MONUMENT AND ESTABLISHED 2 TIES. THIS IS FILED ON CERTIFICATE NO. 233 AT COUNTY HIGHWAY DEPARTMENT.

IN 2006 BEFORE AN OVERLAY WAS DONE ON HIGHWAY 47 THE MINNESOTA HIGHWAY DEPARTMENT ESTABLISHED KANABEC COUNTY COORDINATES ON THIS C.I.M. THIS VALUE WAS WITHIN 0.09 OF THE COORDINATES E.G. RUD AND SONS ESTABLISHED IN MAY 2003. A P.K. WAS SET AT THIS LOCATION FEBRUARY 7TH 2007 AND NEW TIES ESTABLISHED.