

CERTIFICATE OF LOCATION OF GOVERNMENT CORNER

NORTH QUARTER Corner of Section 14, Township 39, Range 25, 4TH P.M.

STATE OF MINNESOTA, County of KANABEC

At the corner location shown on the sketch:
IN AUGUST 2004 SET REBAR
AND ESTABLISHED G.P.S. COORDINTES ON THE LOCATION.

Kanabec County U.S. Survey Feet Coordinates
NAD 1983, HARN 1996 Adjustment
Obtained by RTK GPS Observation

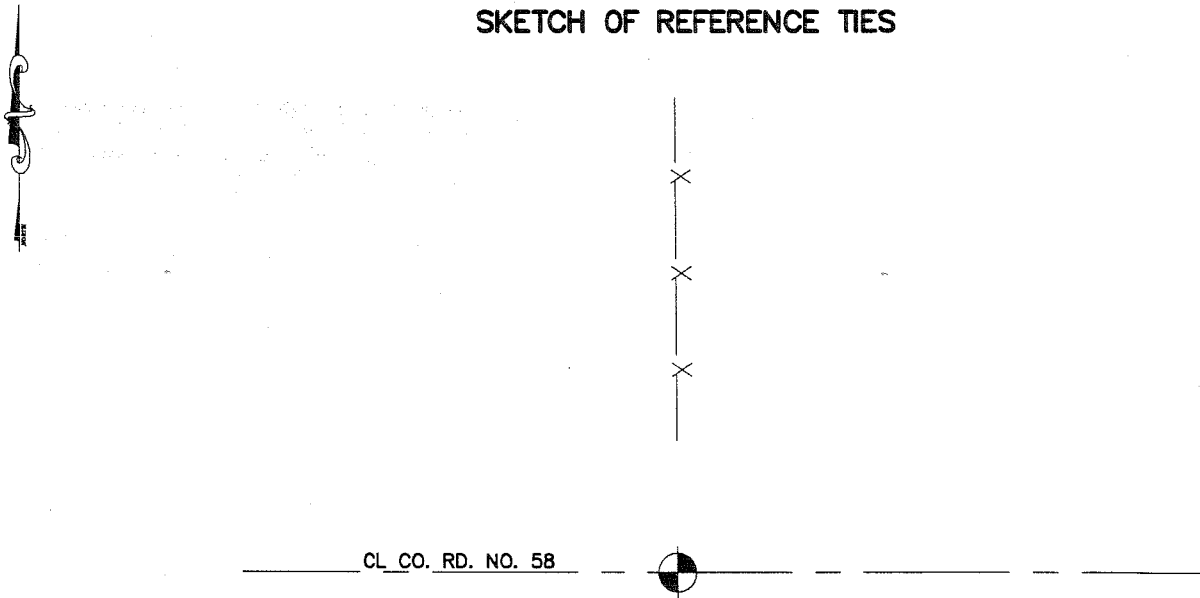
Northing= 153566.96

Easting= 367063.31

Note: NAD 1983, HARN 1996 Adjustment
coordinates are NOT compatible with
NAD 1983 coordinates

Note: 1 Meter=3937/1200 U.S. Survey Feet

SKETCH OF REFERENCE TIES



Statement of evidence relative to this corner location is on back of page.

I hereby certify that this document and the data contained herein was prepared by me or under my direct supervision.

Ernest L. Reed
Signature

1-23-2006
Date

Registration No. Minn No 9808

- Land Surveyor, Professional Engineer
- County Surveyor, County Engineer

OFFICE OF THE COUNTY RECORDER

County of _____

I hereby certify that this document was filed in the County Recorder's office at _____ M. on the

_____ day of _____ A.D., 20__

County Recorder _____

BY _____ Deputy

DOCUMENT NO. _____

STATEMENT OF EVIDENCE:

THE ORIGINAL CORNER WAS SET BY DEPUTY SURVEYOR SILAS BARNARD IN JUNE 1855. NO EVIDENCE FOR THE CORNER OR BEARING TREES REMAIN. IN OCTOBER, 1910, JOHN NELSON, FORMER COUNTY SURVEYOR, DID A SURVEY AROUND SECTION 11 AND STATED HE SET A STONE WITH A CHISELED X FOR THIS CORNER.

IN AUGUST 2004 WE RAN A SURVEY AROUND SECTIONS 11, 12, 13, AND 14 TO LOCATE EXISTING MONUMENTS, TIES AND LINES OF OCCUPATION. THIS CORNER FALLS ON THE CENTERLINE OF AN EAST-WEST ROAD AND A FENCE LINE TO THE NORTH.

ON AUGUST 25TH WE EXCAVATED AN AREA 10' BY 25' BY 1' INTO NATURAL GROUND. WE FOUND A FLAT SANDSTONE WITH NO MARKINGS . WE THEREFORE ACCEPTED THE CENTERLINE OF THE ROAD AND FENCE LINE TO THE NORTH AS THE BEST PERPETUATED EVIDENCE TO THIS CORNER. WE SET A #7 REBAR AND ESTABLISHED KANABEC COUNTY COORDINATES ON THIS POSITION. THIS POSITION FELL 6' WEST AND 5.5' SOUTH OF A SINGLE PROPORTIONATE POSITION.