

CERTIFICATE OF LOCATION OF GOVERNMENT CORNER

NORTHEAST Corner of Section 15, Township 39, Range 25, 4TH P.M.

STATE OF MINNESOTA, County of KANABEC

At the corner location shown on the sketch:

FOUND THIS P.K.
AND ESTABLISHED TIES

Kanabec County U.S. Survey Feet Coordinates
NAD 1983, HARN 1996 Adjustment
Obtained by RTK GPS Observation

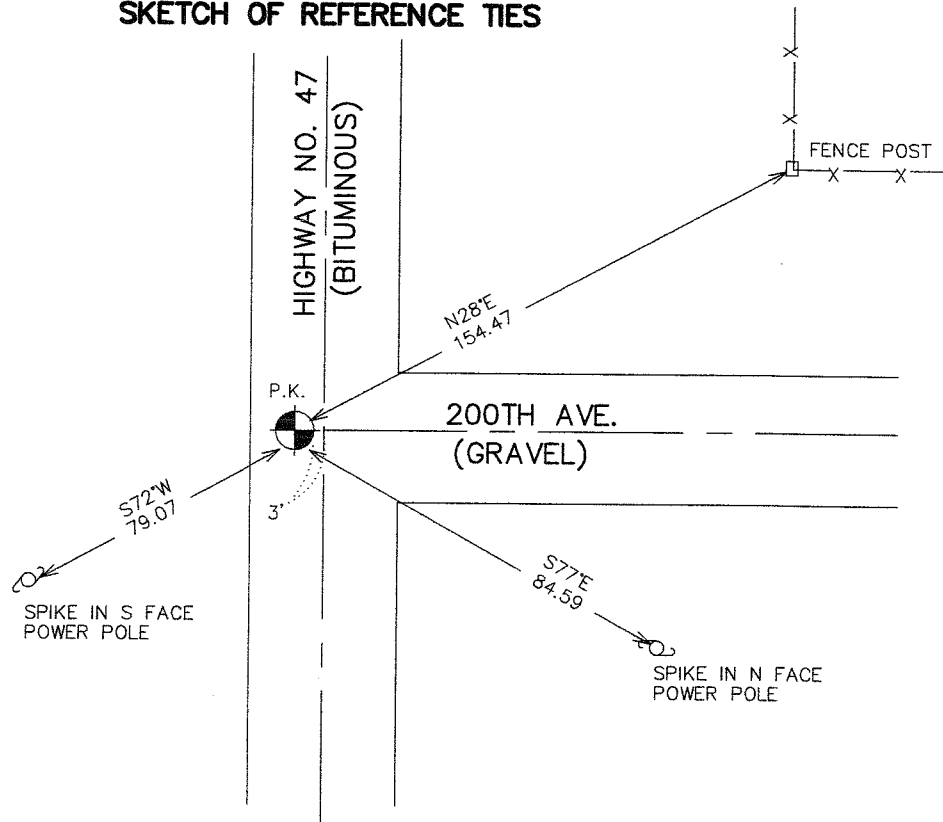
Northing= 153693.78

Easting= 364286.99

Note: NAD 1983, HARN 1996 Adjustment
coordinates are NOT compatible with
NAD 1983 coordinates

Note: 1 Meter=3937/1200 U.S. Survey Feet

SKETCH OF REFERENCE TIES



Statement of evidence relative to this corner location is on back of page.

I hereby certify that this document and the data contained herein was prepared by me or under my direct supervision.

Ernest J. Rud
Signature

3-30-2007
Date

Registration No. Minn No 9808

Land Surveyor, Professional Engineer

County Surveyor, County Engineer

OFFICE OF THE COUNTY RECORDER

County of _____

I hereby certify that this document was filed in the County Recorder's office at _____ M. on the _____ day of _____ A.D., 20____

County Recorder _____

BY _____ Deputy

DOCUMENT NO. _____

NORTHEAST CORNER SECTION 15, T39, R25

STATEMENT OF EVIDENCE

THE ORIGINAL CORNER WAS SET BY DEPUTY SURVEYOR SILAS BARNARD IN JUNE OF 1855 AND 2 BEARING TREES ESTABLISHED. ANY PHYSICAL EVIDENCE FOR THE CORNER AND BEARING TREES NO LONGER REMAIN.

IN JANUARY 1904 JOHN NELSON RAN A SURVEY FROM THE SOUTHWEST CORNER OF SECTION 14 TO THE NORTHWEST CORNER OF SECTION 2. THIS IS RECORDED IN BOOK 1 OF 2 OF SURVEYS PAGE 29 BUT JOHN DOES NOT STATE WHAT HE SET. HE NOTED DISTANCES OF 82.92 CHAINS ALONG THE WEST LINE OF SECTIONS 11 AND 14.

IN OCTOBER 1910 JOHN NELSON DID A SURVEY AROUND SECTION 11 AND AGAIN NOTED A DISTANCE OF 82.92 CHAINS ALONG THE WEST LINE OF SECTION 11. IN THIS SURVEY JOHN NELSON NOTED THIS CORNER BEING A WOOD STAKE IN A CORDOROY ROAD. HE DIDN'T NOTE IF HE REPLACED IT WITH A STONE.

IN 1966 KEN WASNIE OF THE MINNESOTA HIGHWAY DEPARTMENT FOUND A STONE AT THIS CORNER WITH AN X ON IT. HE SET A CAST IRON MONUMENT OVER THIS STONE AND SET TWO REFERENCE TIES.

IN 2006 BEFORE AN OVERLAY WAS PUT ON HIGHWAY 47 THE MINNESOTA HIGHWAY DEPARTMENT ESTABLISHED KANABEC COUNTY COORDINATES ON THIS MONUMENT. THIS POSITION FITS WITHIN 0.08 OF A FOOT FROM COORDINATES ESTABLISHED BY E.G. RUD AND SONS IN JUNE OF 2003.