

# CERTIFICATE OF LOCATION OF GOVERNMENT CORNER

*East quarter*  
 \_\_\_\_\_  
 NORTHEAST

Corner of Section ~~27~~ <sup>15</sup>, Township 39, Range 25, 4TH P.M.

STATE OF MINNESOTA, County of KANABEC

At the corner location shown on the sketch:

FOUND THIS MONUMENT  
 AND ESTABLISHED G.P.S. COORDINATES ON ITS LOCATION.

Kanabec County U.S. Survey Feet Coordinates  
 NAD 1983, HARN 1996 Adjustment  
 Obtained by RTK GPS Observation

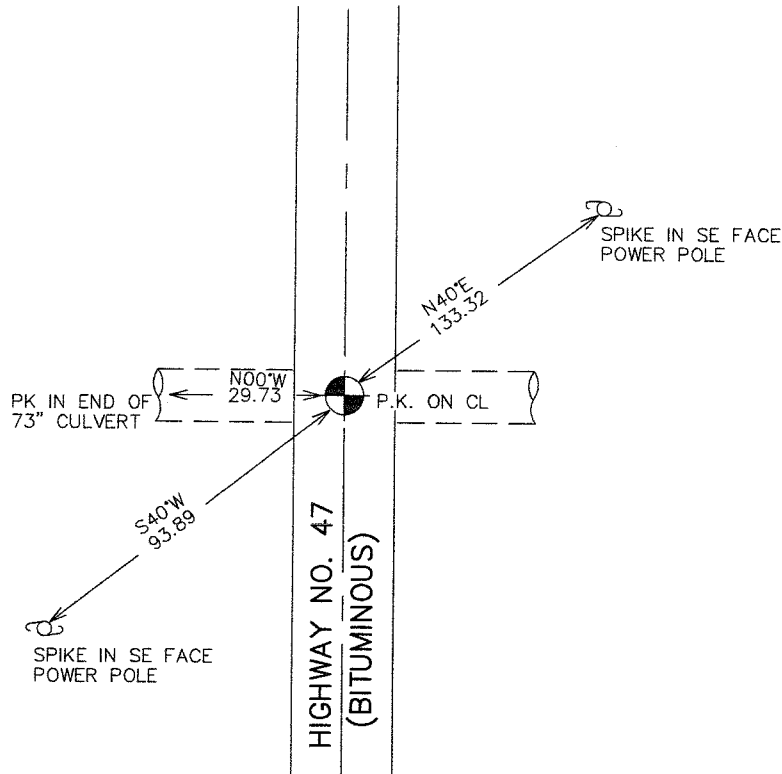
Northing= 150953.39

Easting= 364368.12

Note: NAD 1983, HARN 1996 Adjustment  
 coordinates are NOT compatible with  
 NAD 1983 coordinates

Note: 1 Meter=3937/1200 U.S. Survey Feet

## SKETCH OF REFERENCE TIES



Statement of evidence relative to this corner location is on back of page.

I hereby certify that this document and the data  
 contained herein was prepared by me or under  
 my direct supervision.

*Ernest L. Rud*  
 Signature

3-28-2007  
 Date

Registration No. Minn No 9808

Land Surveyor,       Professional Engineer

County Surveyor,       County Engineer

### OFFICE OF THE COUNTY RECORDER

County of \_\_\_\_\_

I hereby certify that this document was filed in  
 the County Recorder's office at \_\_\_\_\_ M. on the

\_\_\_\_\_ day of \_\_\_\_\_ A.D., 20\_\_

County Recorder \_\_\_\_\_

BY \_\_\_\_\_ Deputy

DOCUMENT NO. \_\_\_\_\_

EAST QUARTER CORNER SECTION 15, T39, R25

**STATEMENT OF EVIDENCE**

THE ORIGINAL CORNER WAS SET BY DEPUTY SURVEYOR SILAS BARNARD IN JUNE OF 1855 AND 2 BEARING TREES ESTABLISHED. ANY PHYSICAL EVIDENCE FOR THE CORNER AND BEARING TREES NO LONGER REMAIN.

THIS CORNER FALLS ON THE CENTERLINE OF STATE HIGHWAY 47 AND A DITCH RUNNING EAST-WEST.

IN BOOK 1 OF NUMBER 2 SERIES OF SURVEY RECORDS. JOHN NELSON RECORDED A SURVEY ALONG THE WEST LINE OF SECTION 2, 11, AND 14. HE RECORDED A DISTANCE 82.92 CHAINS (5472.72 FEET) BUT MAKE NO NOTE OF A MONUMENT BEING SET AT THIS QUARTER CORNER. TODAY WE MEASURE 5472.42 FEET. ON MINNESOTA HIGHWAY DEPARTMENT PLAN FOR TRUNK HIGHWAY 47 A MEASUREMENT OF 5476.9 FEET IS SHOWN. IN MARCH 2003 E.G. RUD AND SONS FOUND A P.K. ON THE CENTERLINE OF TRUNK HIGHWAY 47 AND THE CENTERLINE OF THE EAST-WEST DITCH. THIS LOCATION FIT THE PRORATED DISTANCES ON MINNESOTA HIGHWAY DEPARTMENT PLANS. THEREFORE WE ACCEPTED THIS LOCATION AS BEING THE BEST EVIDENCE FOR THE PERPETUATION OF THIS CORNER.

IN FEBRUARY 2007, NEW TIES WERE TAKEN AND KANABEC COUNTY COORDINATES ESTABLISHED USING G.P.S. EQUIPMENT.