

CERTIFICATE OF LOCATION OF GOVERNMENT CORNER

NORTHEAST Corner of Section 22, Township 39, Range 25, 4TH P.M.

STATE OF MINNESOTA, County of KANABEC

At the corner location shown on the sketch:
 FOUND THIS MONUMENT
 AND ESTABLISHED G.P.S. COORDINATES ON ITS LOCATION.

Kanabec County U.S. Survey Feet Coordinates
 NAD 1983, HARN 1996 Adjustment
 Obtained by RTK GPS Observation

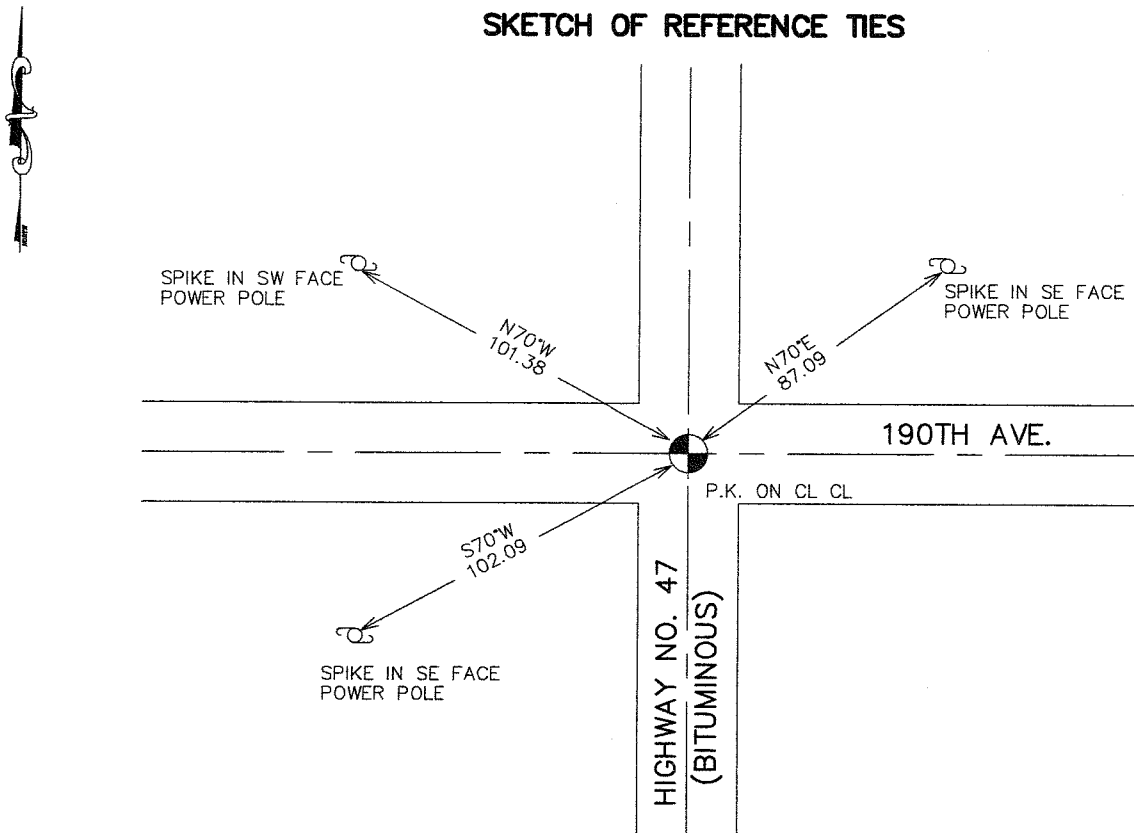
Northing= 148223.74

Easting= 364448.04

Note: NAD 1983, HARN 1996 Adjustment
 coordinates are NOT compatible with
 NAD 1983 coordinates

Note: 1 Meter=3937/1200 U.S. Survey Feet

SKETCH OF REFERENCE TIES



Statement of evidence relative to this corner location is on back of page.

I hereby certify that this document and the data contained herein was prepared by me or under my direct supervision.

Ernest J. Reed
 Signature

3-30-2007
 Date

Registration No. Minn No 9808

Land Surveyor, Professional Engineer

County Surveyor, County Engineer

OFFICE OF THE COUNTY RECORDER

County of _____

I hereby certify that this document was filed in the County Recorder's office at _____ M. on the

_____ day of _____ A.D., 20__

County Recorder _____

BY _____ Deputy

DOCUMENT NO. _____

NORTHEAST CORNER SECTION 22, T39, R25

STATEMENT OF EVIDENCE

THE ORIGINAL CORNER WAS SET BY DEPUTY SURVEYOR SILAS BARNARD IN JUNE OF 1855 AND 4 BEARING TREES ESTABLISHED. ANY PHYSICAL EVIDENCE FOR THE CORNER AND BEARING TREES NO LONGER REMAIN.

THIS CORNER FALLS ON THE CENTERLINE OF STATE HIGHWAY 47 AND THE CENTERLINE OF AN EAST-WEST ROAD. NO RECORDS OF ANY SUBSEQUENT SURVEYS COULD BE FOUND AT KANABEC COUNTY OFFICES.

THE STATE RIGHT OF WAY MAP FOR TRUNK HIGHWAY 47 INDICATES THE CENTERLINE OF HIGHWAY 47 AND THE CENTERLINE OF COUNTY ROAD 57 WAS USED FOR THE NORTHEAST CORNER OF SECTION 22.

IN MAY 2003 E.G. RUD AND SONS FOUND A P.K. AT CENTERLINE CENTERLINE AND NO OTHER EVIDENCE COULD BE FOUND.

THIS WAS ACCEPTED AS THE BEST EVIDENCE FOR THE LOCATION OF THIS CORNER BEING IT WAS AT THE LONG USED LOCATION BY THE MINNESOTA HIGHWAY DEPARTMENT AND ADJOINING LAND OWNERS.

NEW TIES WERE TAKEN AND KANABEC COUNTY COORDINATES WERE ESTABLISHED USING G.P.S. EQUIPMENT.