

CERTIFICATE OF LOCATION OF GOVERNMENT CORNER

EAST QUARTER Corner of Section 22, Township 39, Range 25, 4TH P.M.

STATE OF MINNESOTA, County of KANABEC

At the corner location shown on the sketch:

SET A LARGE SPIKE
AND ESTABLISHED TIES

Kanabec County U.S. Survey Feet Coordinates
NAD 1983, HARN 1996 Adjustment
Obtained by RTK GPS Observation

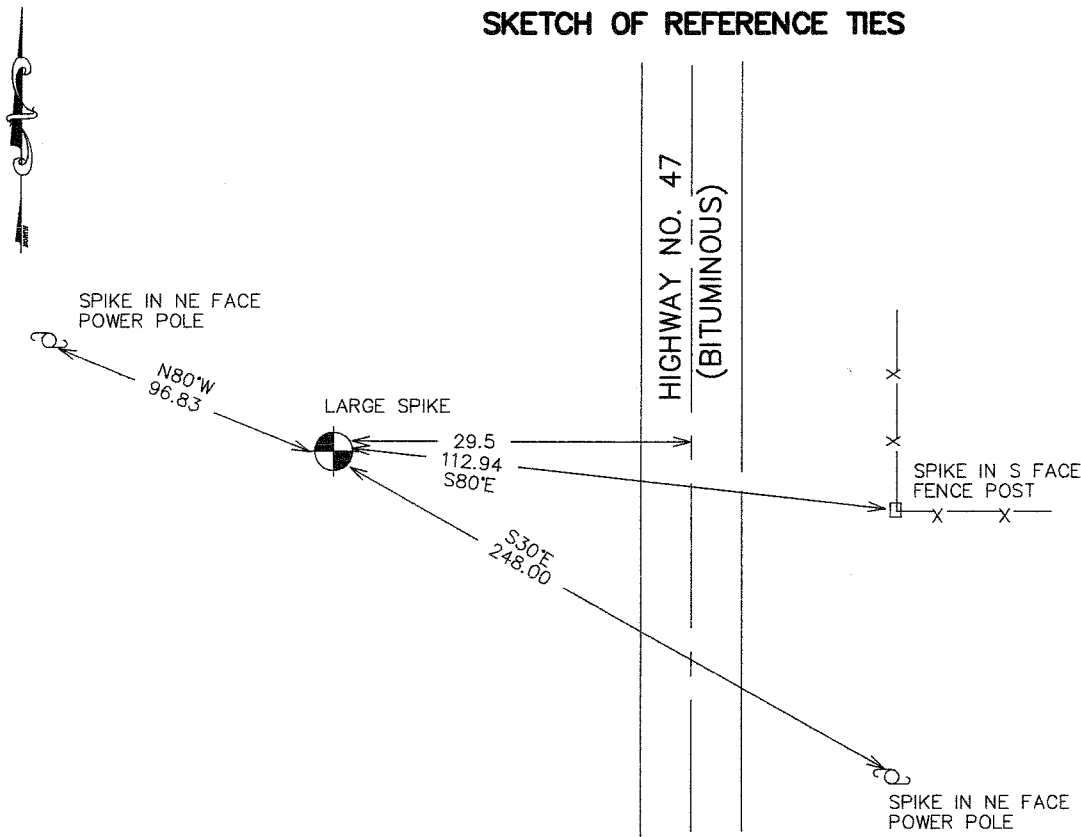
Northing= 145576.14

Easting= 364489.72

Note: NAD 1983, HARN 1996 Adjustment
coordinates are NOT compatible with
NAD 1983 coordinates

Note: 1 Meter=3937/1200 U.S. Survey Feet

SKETCH OF REFERENCE TIES



Statement of evidence relative to this corner location is on back of page.

I hereby certify that this document and the data contained herein was prepared by me or under my direct supervision.

Ernst J. Rud
Signature

3-30-2007
Date

OFFICE OF THE COUNTY RECORDER

County of _____

I hereby certify that this document was filed in the County Recorder's office at _____ M. on the _____ day of _____ A.D., 20____

County Recorder _____

BY _____ Deputy

DOCUMENT NO. _____

Registration No. Minn No 9808

- Land Surveyor, Professional Engineer
- County Surveyor, County Engineer

EAST QUARTER CORNER SECTION 22, T39, R25

STATEMENT OF EVIDENCE

THE ORIGINAL CORNER WAS SET BY DEPUTY SURVEYOR SILAS BARNARD IN JUNE OF 1855 AND 2 BEARING TREES ESTABLISHED. ANY PHYSICAL EVIDENCE FOR THE CORNER AND BEARING TREES NO LONGER REMAIN.

NO RECORDS OF SUBSEQUENT SURVEYS COULD BE FOUND AT THE KANABEC COUNTY OFFICES.

IN 1966 KEN WASNIE FROM THE MINNESOTA HIGHWAY DEPARTMENT FOUND A STONE WITH AN X CHISELED ON IT ONE FOOT BELOW THE SURFACE. HE SET A CAST IRON MONUMENT AND ESTABLISHED TWO REFERENCE TIES.

IN 2006 BEFORE AN OVERLAY WAS PUT ON HIGHWAY 47 THE MINNESOTA HIGHWAY DEPARTMENT LOCATED THIS MONUMENT WITH G.P.S. EQUIPMENT AND ESTABLISHED KANABEC COUNTY COORDINATES ON THIS C.I.M.

IN FEBRUARY 2007 E.G. RUD RESET A LARGE SPIKE AT THIS LOCATION AND ESTABLISHED 4 REFERENCE TIES TO THE CORNER.