

# CERTIFICATE OF LOCATION OF GOVERNMENT CORNER

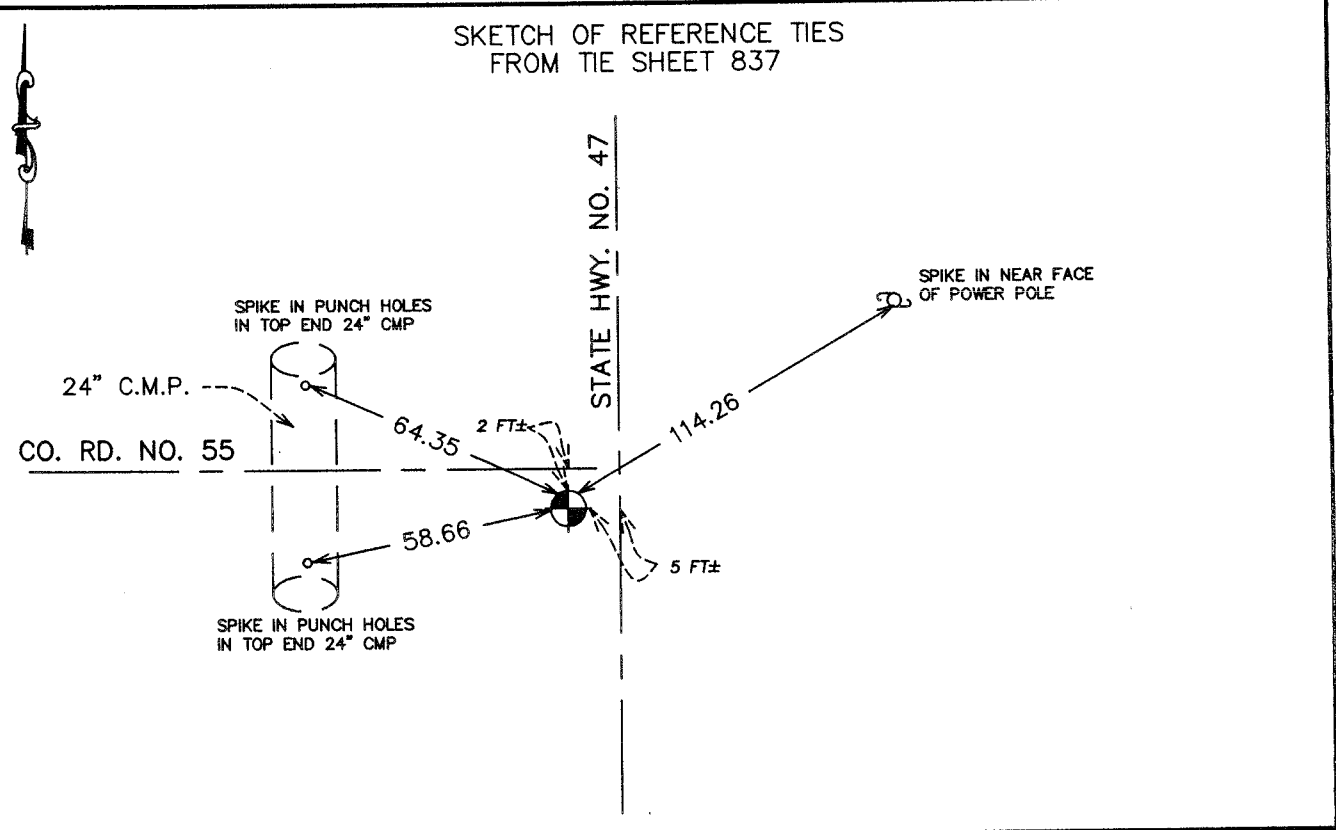
NORTHEAST Corner of Section 27, Township 39, Range 25, 4TH P.M.  
 STATE OF MINNESOTA, County of KANABEC

At the corner location shown on the sketch:  
 On 06/ /2003 Found a Kanabec County Monument.

Kanabec County U.S. Survey Feet Coordinates  
 NAD 1983, HARN 1996 Adjustment  
 Obtained by RTK GPS Observation

Northing= 142918.20  
 Easting= 364530.30

Note: NAD 1983, HARN 1996 Adjustment  
 coordinates are NOT compatible with  
 NAD 1983 coordinates  
 Note: 1 Meter=3937/1200 U.S. Survey Feet



Statement of evidence relative to this corner location is on back of page.

I hereby certify that this document and the data  
 contained herein was prepared by me or under  
 my direct supervision.

Ernest [Signature] 6-30-2004  
Signature Date

Registration No. 9808

- Land Surveyor,       Professional Engineer  
 County Surveyor,     County Engineer

### OFFICE OF THE COUNTY RECORDER

County of \_\_\_\_\_

I hereby certify that this document was filed in  
 the County Recorder's office at \_\_\_\_\_ M. on the  
 \_\_\_\_\_ day of \_\_\_\_\_ A.D., 20\_\_\_\_

County Recorder \_\_\_\_\_

BY \_\_\_\_\_ Deputy

**DOCUMENT NO.** \_\_\_\_\_

STATEMENT OF EVIDENCE  
(FROM TIE SHEET 837)

NE CORNER SEC. 27-39-25

All of the original bearing trees are now gone.

There is no resurvey data on file for this corner.

The State Department of Transportation assumed this corner at the intersection of existing roads in 1941 before Highway No. 47 was rebuilt. Their records show this corner 5.2 feet west of the centerline of the present centerline of Highway No. 47.

This location was accepted as the best available evidence of this corner.

(2003)

In June 2003 we ran a survey around Sections 25 and 26 and found this pipe set by M.B. Rude. We established Kanabec County Coordinates on this corner using GPS equipment.